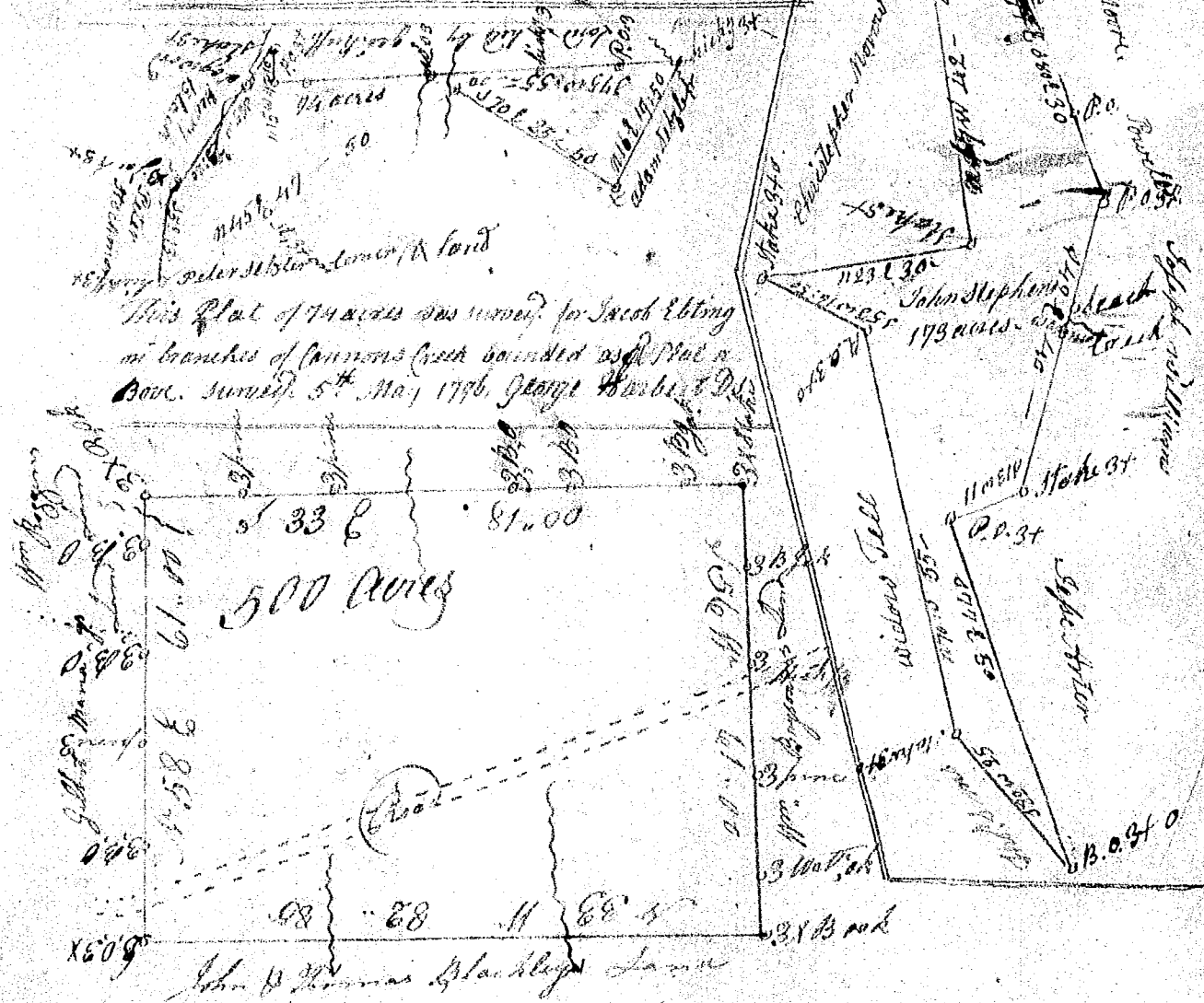


The Surveyed Plat of 173 acres surveyed for John Stephens in Lawrence County on a branch of Walnut Creek of Sandy River bounded as per Plat Surveyed 29 Nov 1796. Will. Smith D.S.



Survey for Patrick Cunningham 18 July 1796 lying on the branches of Dutch River & Dumarys Creek Lawrence County

This plot of 330 acres on the land of Benjamin Land a small branch of Dutch river and Dumarys Creek & on a wagon road surveyed 18 Dec 1796 E.D.M. And Thompson



20 Chippich  
 This plot was surveyed for William Cannon in Washington County on Dutch river surveyed 11 March 1797  
 A Pearson & Co