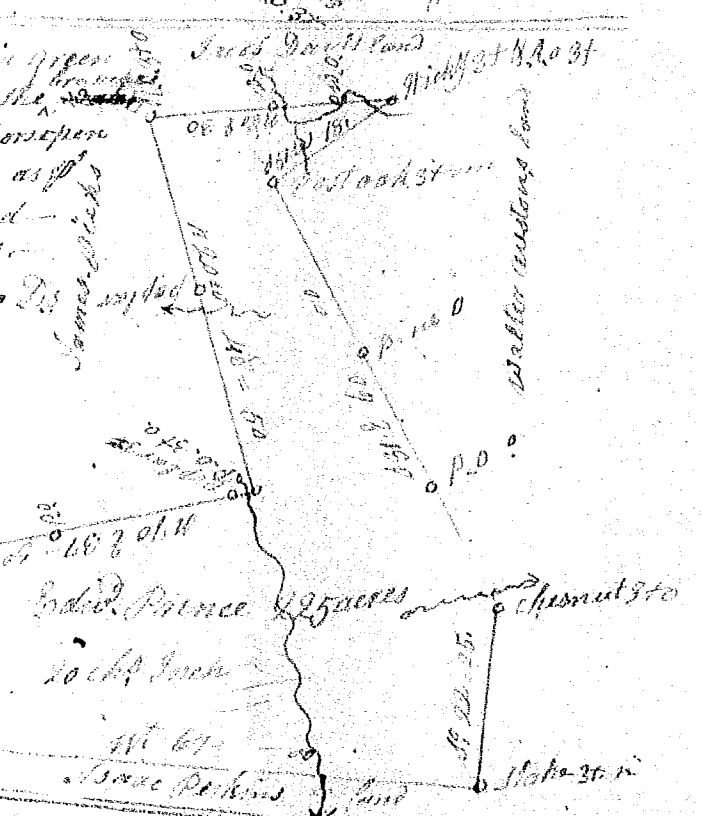


This plot of 220 acres in Lawrence County in a branch of the north creek the water of which was surveyed for Wm. Fulton the 14<sup>th</sup> of Aug. 1795. by Henderson Sept. 9<sup>th</sup> 1796. in D.



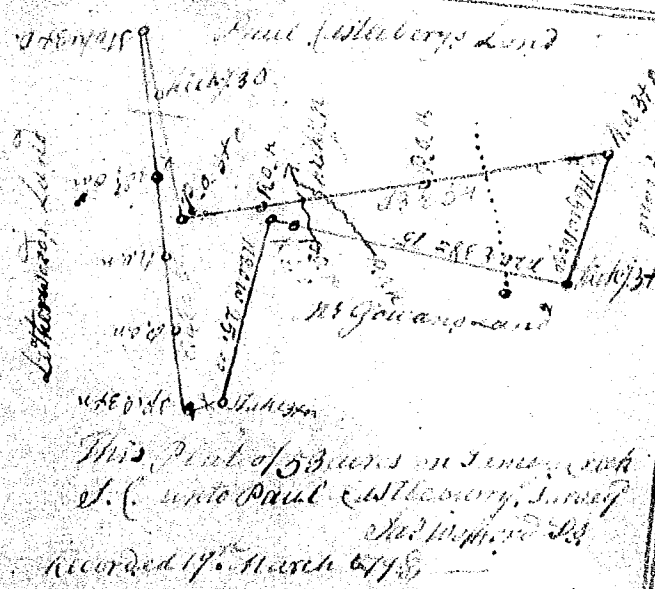
This plot of 325 acres in Green Hills County on some of the waters of Wilders Creek, and the Horsepen Creek of Enoree bounded as per Plat Survey for Edward Prince the 20<sup>th</sup> Febry. 1797 by Wm. Gilmore Ds. Recorded 24<sup>th</sup> March 1797



This above plot of 26 1/2 acres in Lawrence County and with the first of Saluda bounding as per Plat Survey for Elijah Stone the 24<sup>th</sup> of Oct. 1797. by Wm. Gilmore Ds. Recorded 25<sup>th</sup> April 1796.



This plot of 53 acres in Green Hills Co. unto Paul Calloway, Surveyed and Reported Ds. Recorded 17<sup>th</sup> March 1798.



This plot laid out for Gideon Reynolds in Spartanburg County between Tiger & Dutchmans Creek bounded as per plat survey of 29<sup>th</sup> Jan. 1798. A. Thomson Ds. Recorded 3<sup>rd</sup> Feb. 1798.

