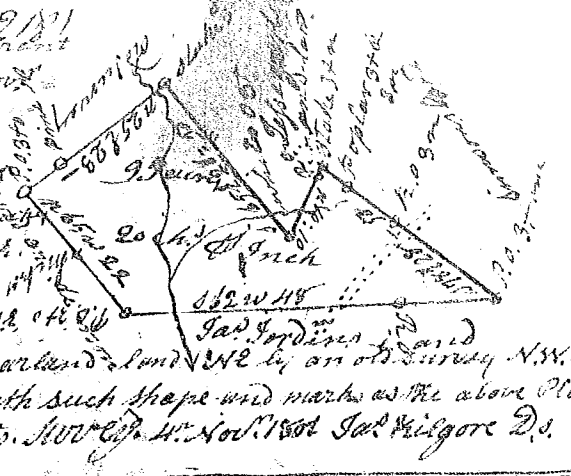
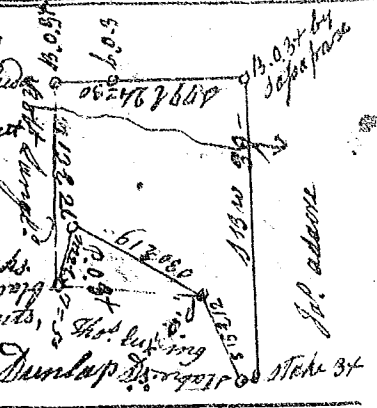


118 (9/11)  
 S<sup>c</sup> Carolina, Pursuant to a warrant  
 from John Thomas, Com. dated 2<sup>d</sup> Nov<sup>r</sup>  
 1801 I have admeasured and laid  
 out unto John Desham a tract of  
 ninety five acres of land in  
 Spartanburg District on small branch  
 of Broad, Creek & fork of same creek  
 a Tygar River Bounded by lines  
 running S.W. by James Jordins land S.E. by  
 by Simason's land N.W. by Jesse garden's land N.E. by an old survey N.W. by  
 by David Anderson's land, and hath such shape and marks as the above Plat  
 Recorded 19<sup>th</sup> Nov<sup>r</sup> 1801



South Carolina Laurens District Pursuant to  
 a warrant from John Thomas Com. of loc<sup>n</sup> N side Saluda  
 dated 25<sup>th</sup> Nov<sup>r</sup> 1801 I have admeasured and laid out  
 unto Josiah Williams a tract fifty six acres of  
 land in said District on a branch of Duncan's  
 branch of Enoree river, and hath such shape, marks  
 bearings and boundings as the above Plat represents,  
 Recorded 28<sup>th</sup> Nov<sup>r</sup> 1801 } Certified 28<sup>th</sup> Nov<sup>r</sup> 1801 J<sup>m</sup> Dunlap S<sup>r</sup> Clerk 34



S<sup>c</sup> Carolina Pursuant to a warrant  
 from John Thomas Com. of loc<sup>n</sup> dated  
 12<sup>th</sup> Nov<sup>r</sup> 1801 I have surveyed for  
 William Wells & James Smith a  
 tract of seven hundred & sixty  
 five acres of land in Spartanburg  
 district on waters of Broad creek  
 and Baxters branch & other  
 branches of main Saluda river &  
 N. Saluda bounded N. by Thomas  
 Gore's land E. by Nelson's & Gore's land  
 S. by Gore & Baxters lands. W. by  
 and Mr. Millins land and hath such  
 shape, marks, bearings as the above  
 Plat represents, Surveyed 23<sup>rd</sup> Nov<sup>r</sup> 1801  
 Jas. Smith S<sup>r</sup>



Recorded 7<sup>th</sup> Dec<sup>r</sup> 1801  
 Newberry District Pursuant to a warrant from John  
 Thomas Com. of loc<sup>n</sup> N side Saluda dated 6<sup>th</sup> March 1800  
 I have admeasured and laid out unto Francis  
 Stiggins a lot of land containing Seventy four  
 acres in said District on waters of said Saluda  
 bounding S.W. by said Stiggins land S.E. on Cove land N.E. on land the lot of  
 John Glen Dec<sup>r</sup> and hath such shape and marks as the above plat represents  
 Recorded 10<sup>th</sup> Dec<sup>r</sup> 1801 } Certified March 12<sup>th</sup> 1800 W<sup>m</sup> Caldwell S<sup>r</sup>

