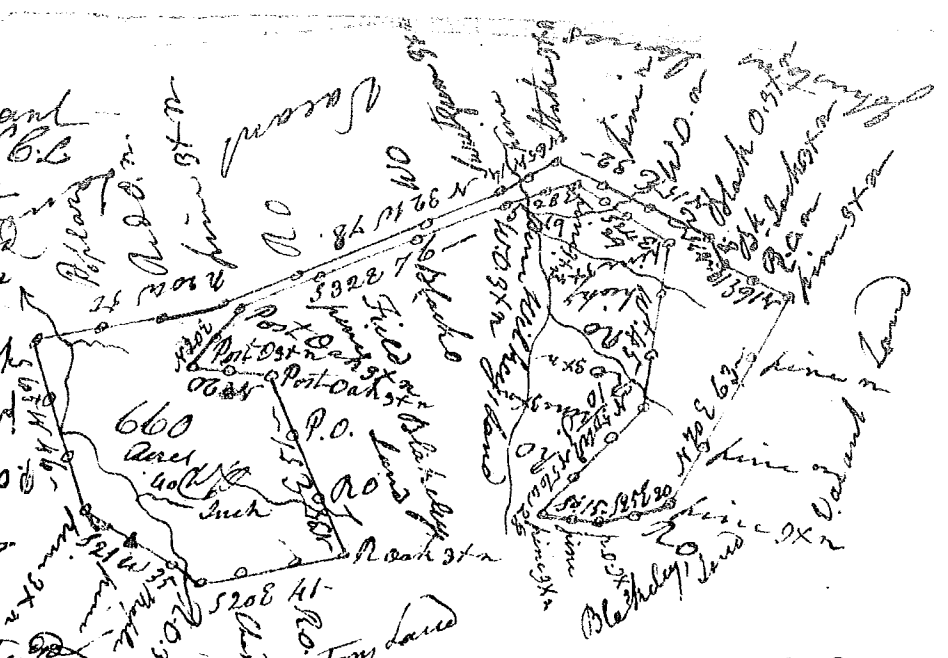
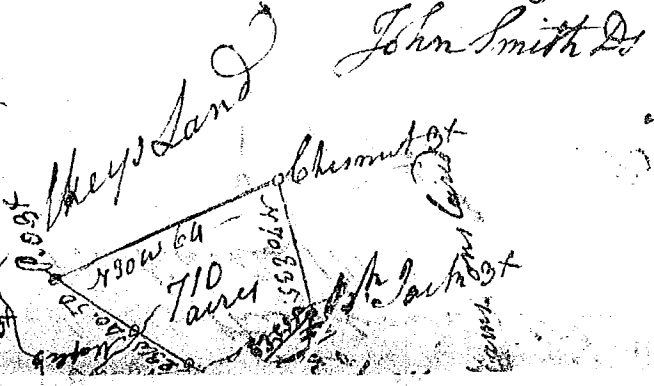


State of S^c Carolina

Pursuant to a warrant from John Thomas Esq. C. C. dated the 7th Jan^y 1802 I have admeasured & laid out unto John Adkinson a tract of 660 Acres of Land situate in Union District on the Waters of Broad river Bounded by a line S E by Johnstons N E by Fielder's Blakely's N E by Blakely's N E by John Whelchel S W. W. & N W by Whelchel S E by Blakely's S E & North or unknown N E by Johnstons all other sides with such form & marks as the above plat represents. Surv. 10th July 1802. Recorded the 4th March 1802



S^c Carolina Pursuant to a warrant from John Thomas Esq. C. C. dated the 12th Feb^y 1802. I have admeasured & laid out unto John Mahamson a tract of 710 Acres situate in Union District on the S^c side Broad river on both sides of Broad river



with such form & marks as the above plat represents. Surv. the 15th July 1802



Recorded the 4th March 1802

Rich^d Thomson D^y