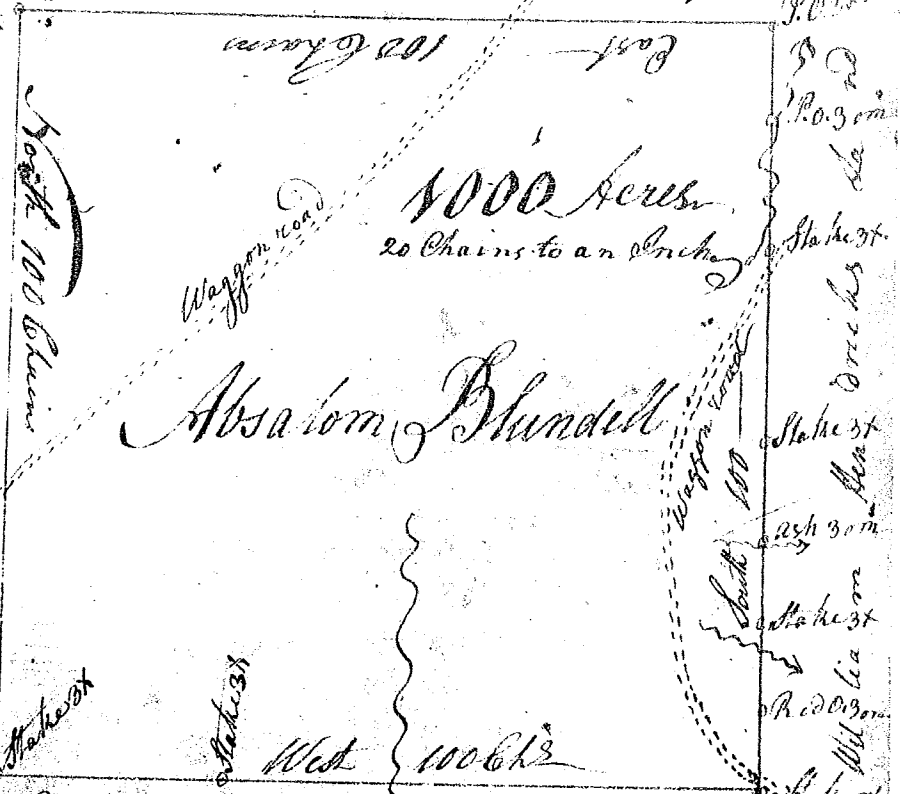
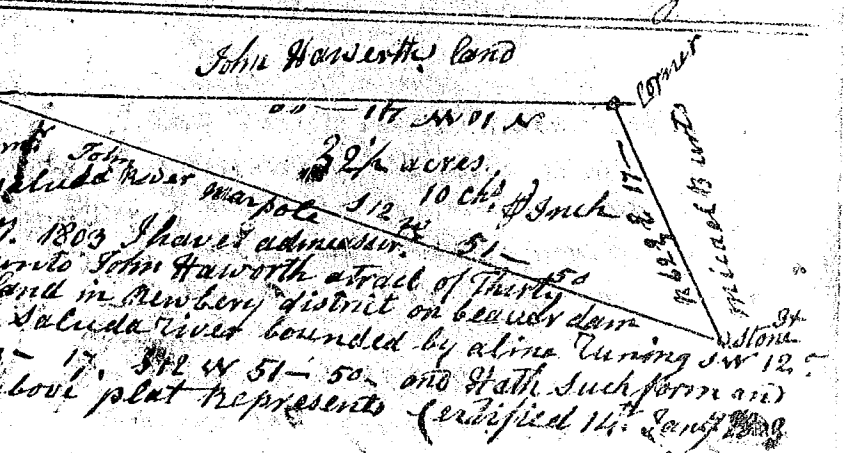


Pursuant to a
 Warrant from
 John Thomas Comr
 No Saluda River
 dated the 13th of
 March 1802, I
 have admeasur'd
 & laid out unto
 Absalom Blundell
 a tract one thousand
 2 hundred acres of
 Land situate in
 Spartanburgh Dist
 On branches of
 Abners creek of
 Enoree river &
 some branches
 of the Needy fork
 of Tygar River
 Bounded on the
 W^t. by 600 Acres
 owned by James
 Langford No by Honuquah now n
 & Joshua Benson
 and East by unknown land & hath such form marks butting and
 boundaries as the above plat represents Surveyed the 19th March 1802
 Recorded the 17th Nov. 1802



James Kilgore Deput

Pursuant to a
 warrant from
 John Thomas Comr
 of the N^o Side Saluda River
 dated 14th Jan^y 1803 I have admeasur'd
 and laid out unto John Haworth a tract of Thirty
 Two acres of land in Newberry district on beaver dam
 Creek waters of Saluda River bounded by a line turning SW 12^o
 51' = 50 N 2 63 - 17' SW 48 51 - 50 and hath such form and
 marks as the above plat represents Certified 14th Jan^y 1803



P. B. Waters Deput