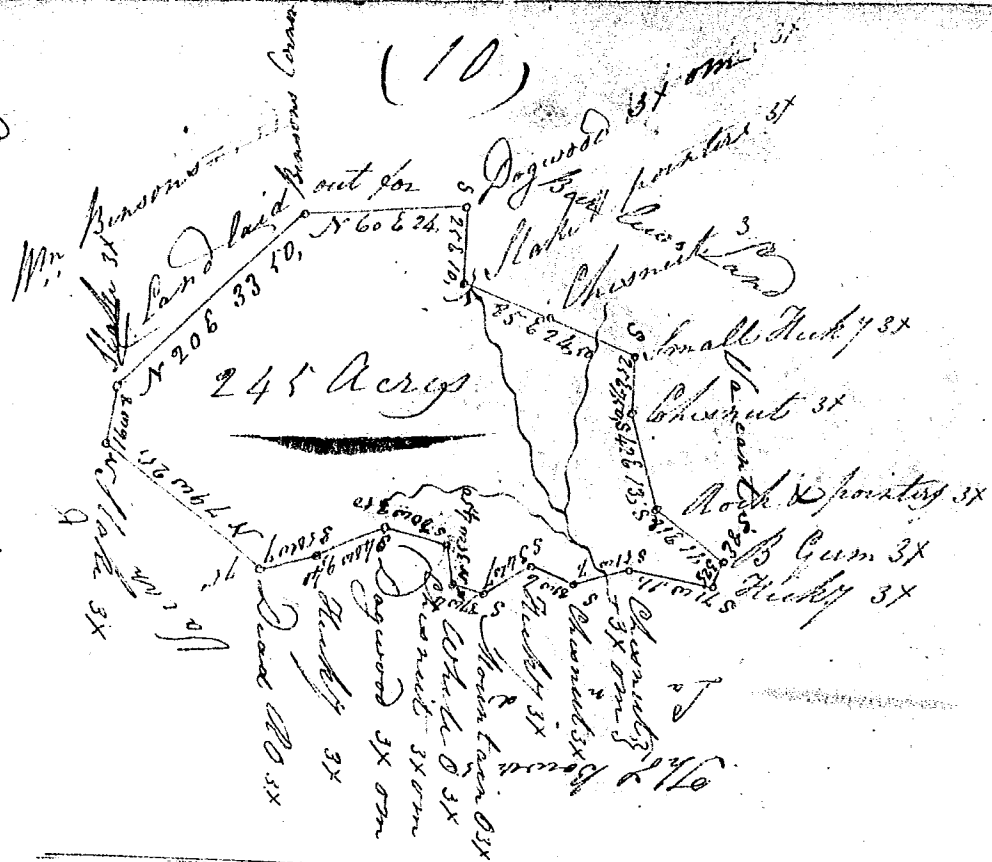


Laid down by a tract of
land by Chas for tract of



South Carolina

Pursuant to a warrant from John Young Esqr Commissioner of Locations for Greenville District dated the 21st day of April 1819, I have examined and laid out unto Charles Gosnell a tract a tract of two hundred and forty five acres of Land situate in Greenville District of the head branch of the sinkhole fork of Tygar River joining the Glabby Mountain, Bounded Northwestwardly by land laid out for Wm Benson Eastwardly by Burlew's land and Southwardly Thos. Bowyer's land, and hath such shape form & marks as the above Plat represents Surveyed the 23rd day of April 1819

G. Salmon D^y
Recorded the 7th day of June 1819 by

Delivered to
John Young C. Loc^{rs}
J. Polman