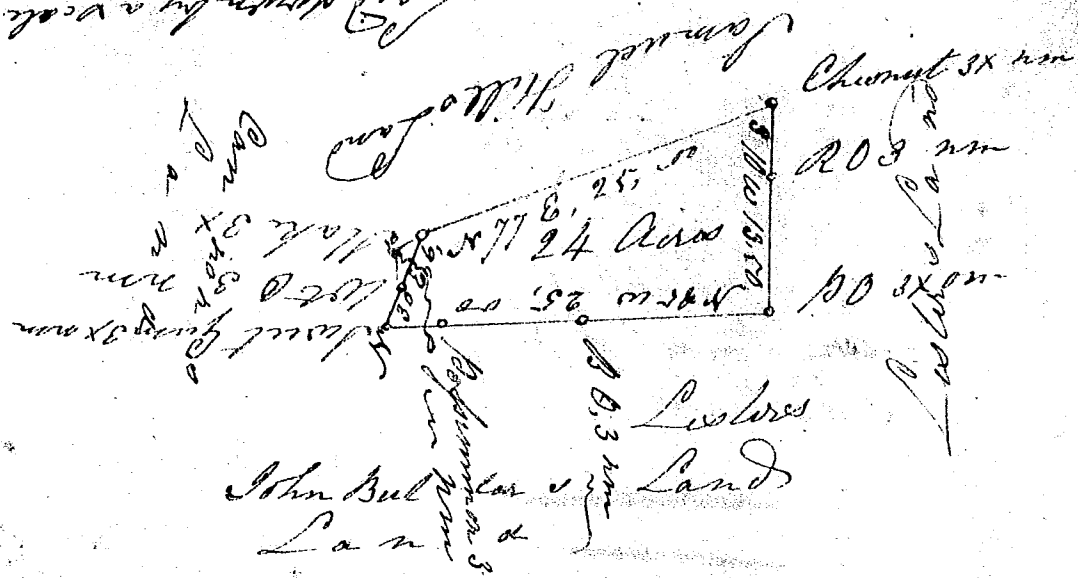


Land shown by a week
of 20 Mr. J. P. ...



South Carolina

Pursuant to a warrant from John Young Esq. Comdr. of Locations bearing date the 25th day of Nov^r 1819, I have caused to be advertised and laid out unto Edw. Buller a tract of 24. Acres of Land, on a small branch of Gilders Creek waters of Onore River, bounded by Lester's line, running S.W. & N.W. Cannon line N.E. by Samuel Hills line running N.E. and has such form & marks, Buttings & Boundings as the above Plat represents.

Survey'd & Certified by me this 26th of Nov^r 1819; ————— B Griffiths

Recorded the 27th of Nov^r 1819 by
John Young Esq.

handed to self