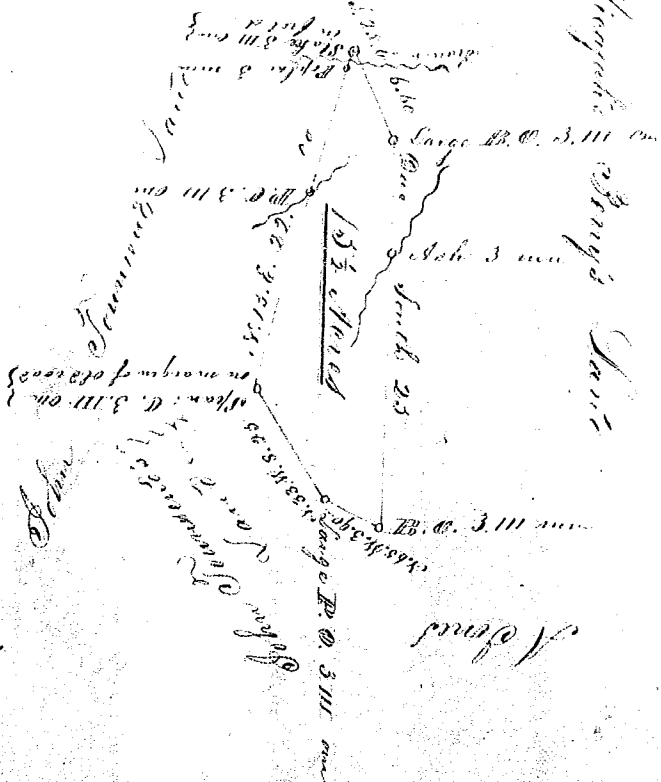
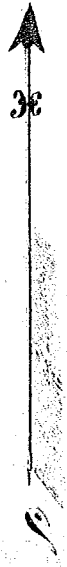


39

Scale 10 Chains per inch



15 1/2 Acres

South Carolina

Pursuant to a Warrant to me directed
I have admeasured and laid out for John Townsend Esq
a tract of Land containing fifteen and a half acres
Situate & lying in Greenville District on the head banks
of the South Reedy Fork waters of Reedy River Having
such form and marks, buttings and boundaries as the above
plat represents. Surveyed the 21st day of June 1842

15 1/2 Acres

Saml Meier

C. S.

50
11/3/42
69
10/27
1842