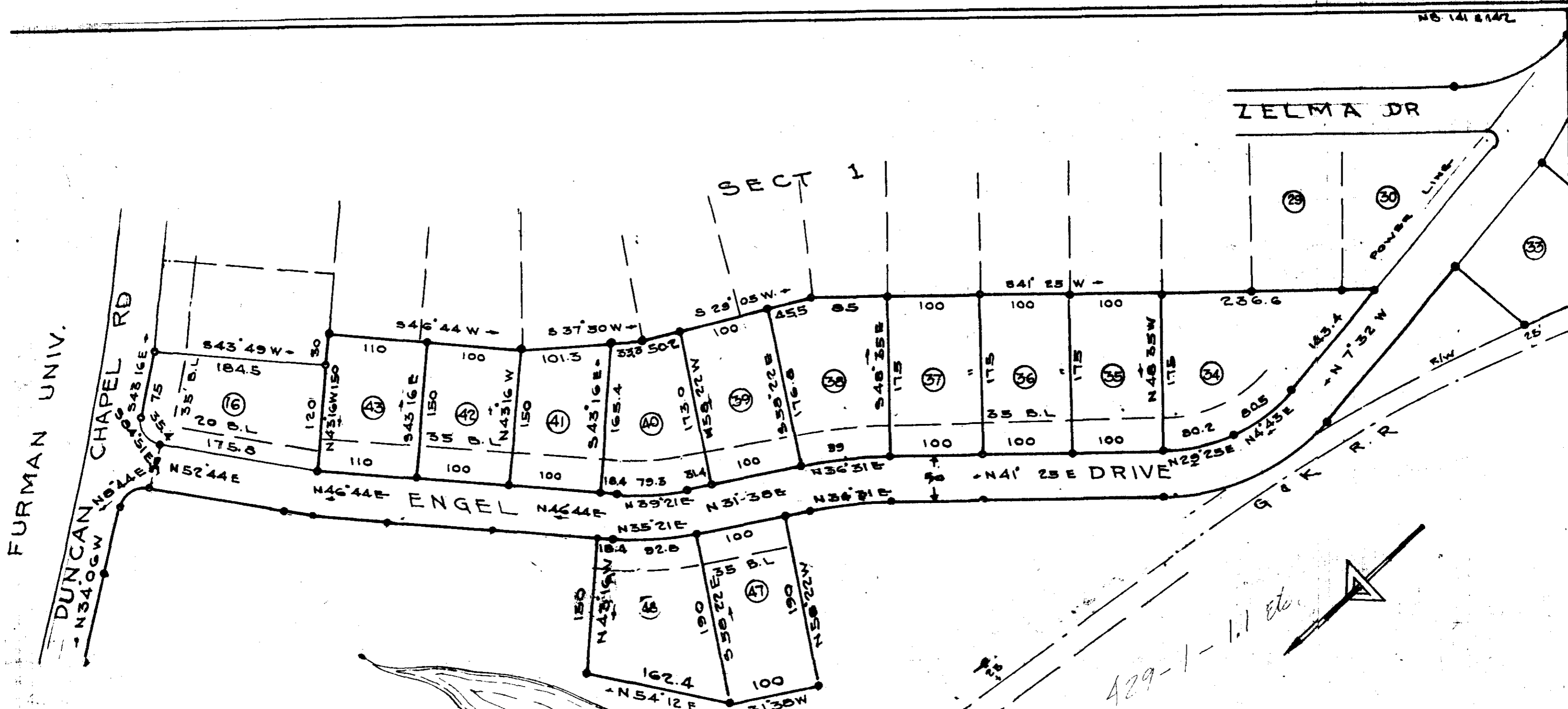


#5401 Filed This 3 day of Sept. 1970
 And Recorded in Vol. 4E Page 193 of 11-32-M
 Ollie Farnsworth
 Register Mesne Conveyance Greenville County, S. C.



SEC. 2
OAKLAND TERRACE
 NEAR
GREENVILLE, S.C.

SCALE 1in=100ft JAN 1961

SEP 3 1970

5401

FILED
 GREENVILLE CO. S. C.
 SEP 3 11 32 AM '70
 OLLIE FARNSWORTH
 R.M.C.

12
 C.C. JONES CIVIL ENGINEER
 GREENVILLE, S. C.

1.00
 HE-193
 THIS PLAT IS NOT A SUBDIVISION
 AS DEFINED BY THE GREENVILLE
 COUNTY SUBDIVISION REGULATIONS.
 8/31/70 *J. Henry House*
 Secretary, Director of
 Planning.
 Greenville County Planning Commission