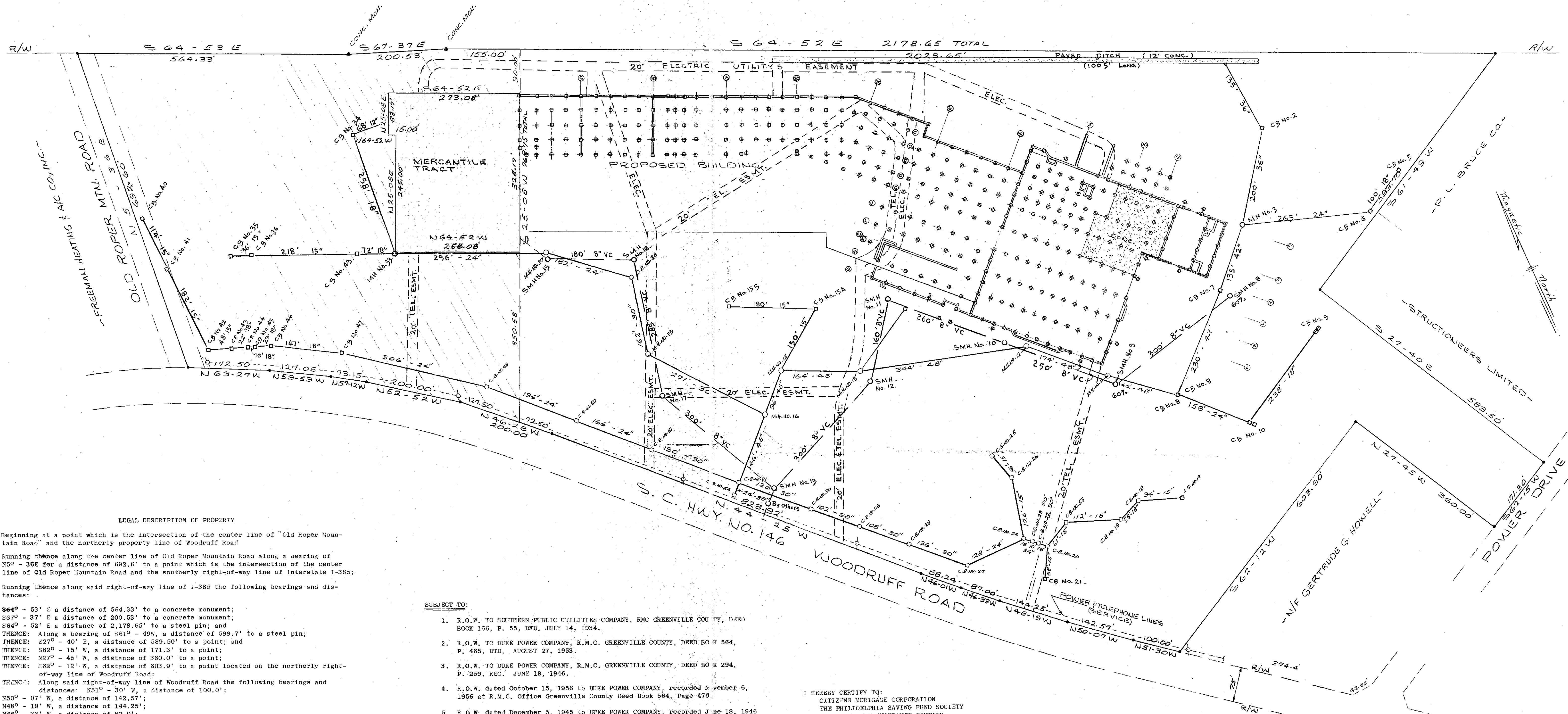


16-C-48

INTERSTATE - 385

16-C-49



LEGAL DESCRIPTION OF PROPERTY

Beginning at a point which is the intersection of the center line of "Old Roper Mountain Road" and the northerly property line of Woodruff Road

Running thence along the center line of Old Roper Mountain Road along a bearing of N5° - 36' E for a distance of 692.6' to a point which is the intersection of the center line of Old Roper Mountain Road and the southerly right-of-way line of Interstate I-385;

Running thence along said right-of-way line of I-385 the following bearings and distances:

S64° - 53' E a distance of 564.33' to a concrete monument;  
 S67° - 37' E a distance of 200.53' to a concrete monument;  
 S64° - 52' E a distance of 2,178.65' to a steel pin; and  
 THENCE: Along a bearing of S61° - 49' W, a distance of 599.7' to a steel pin;  
 THENCE: S27° - 40' E, a distance of 589.50' to a point; and  
 THENCE: S62° - 15' W, a distance of 171.3' to a point;  
 THENCE: N27° - 45' W, a distance of 360.0' to a point;  
 THENCE: S62° - 12' W, a distance of 603.9' to a point located on the northerly right-of-way line of Woodruff Road;

THENCE: Along said right-of-way line of Woodruff Road the following bearings and distances: N51° - 30' W, a distance of 100.0';  
 N50° - 07' W, a distance of 142.57';  
 N48° - 19' W, a distance of 144.25';  
 N46° - 33' W, a distance of 87.0';  
 N46° - 01' W, a distance of 88.24';  
 N44° - 25' W, a distance of 823.92';  
 N46° - 28' W, a distance of 200';  
 N52° - 52' W, a distance of 200';  
 N5° - 12' W, a distance of 75.15';  
 N59° - 59' W, a distance of 127.05'; and  
 N63° - 27' W, a distance of 172.5' to the point of Beginning.

But excluding therefrom that certain parcel and piece of property known as the MERCANTILE TRACT and more fully described as follows:

Beginning at a point which is the intersection of the center line of Old Roper Mountain Road and the northerly property line of Woodruff Road.

Running thence along a bearing of N5° - 36' E for a distance of 692.6' to a point which is the intersection of the center line of Old Roper Mountain Road and the southerly right-of-way line of Interstate I-385;

THENCE: Along a bearing of S64° - 53' E for a distance of 564.33' to a concrete monument;  
 THENCE: Along a bearing of S67° - 37' E for a distance of 200.53' to a concrete monument;  
 THENCE: Along a bearing of S64° - 52' E for a distance of 155.00' to a point;  
 THENCE: Along a bearing of S25° - 08' W for a distance of 90.00' to a point and place of Beginning;  
 THENCE: Along a bearing of N64° - 52' W for a distance of 273.08' to a point;  
 THENCE: Along a bearing of S25° - 08' W for a distance of 83.17' to a point;  
 THENCE: Along a bearing of S64° - 52' E for a distance of 15.00' to a point;  
 THENCE: Along a bearing of S25° - 08' W for a distance of 245.00' to a point;  
 THENCE: Along a bearing of S64° - 52' E for a distance of 258.08' to a point;  
 THENCE: Along a bearing of N25° - 08' E for a distance of 328.17' to a point and place of Beginning.

SUBJECT TO:

- R.O.W. TO SOUTHERN PUBLIC UTILITIES COMPANY, RMC GREENVILLE CO. S. C., DEED BOOK 166, P. 55, DEED, JULY 14, 1934.
- R.O.W. TO DUKE POWER COMPANY, R.M.C. GREENVILLE COUNTY, DEED BOOK 564, P. 465, UTD. AUGUST 27, 1953.
- R.O.W. TO DUKE POWER COMPANY, R.M.C. GREENVILLE COUNTY, DEED BOOK 294, P. 259, REC. JUNE 18, 1946.
- R.O.W. dated October 15, 1956 to DUKE POWER COMPANY, recorded November 6, 1956 at R.M.C. Office Greenville County Deed Book 564, Page 470.
- R.O.W. dated December 5, 1945 to DUKE POWER COMPANY, recorded June 18, 1946 at R.M.C. Office Greenville County Deed Book 294, Page 260.
- GENERAL PERMIT dated October 20, 1956 to SOUTHERN BELL TELEPHONE AND TELEGRAPH COMPANY, recorded November 7, 1956 at R.M.C. Office Greenville County Deed Book 565, Page 18.
- GENERAL PERMIT dated October 20, 1956 to SOUTHERN BELL TELEPHONE AND TELEGRAPH COMPANY, recorded November 7, 1956 at R.M.C. Office Greenville County Deed Book 565, Page 9.
- R.O.W. dated July 23, 1936 to SOUTHERN PUBLIC UTILITIES COMPANY, recorded August 28, 1936 at R.M.C. Office Greenville County Deed Book 161, Page 215.
- R.O.W. dated June 18, 1934 to SOUTHERN PUBLIC UTILITIES COMPANY, recorded August 22, 1934 at R.M.C. Office Greenville County Deed Book 161, Page 62.

I HEREBY CERTIFY TO:  
 CITIZENS MORTGAGE CORPORATION  
 THE BILLORETTA SAVING FUND SOCIETY  
 CHICAGO TITLE INSURANCE COMPANY  
 FIRST HARTFORD REALTY CORPORATION

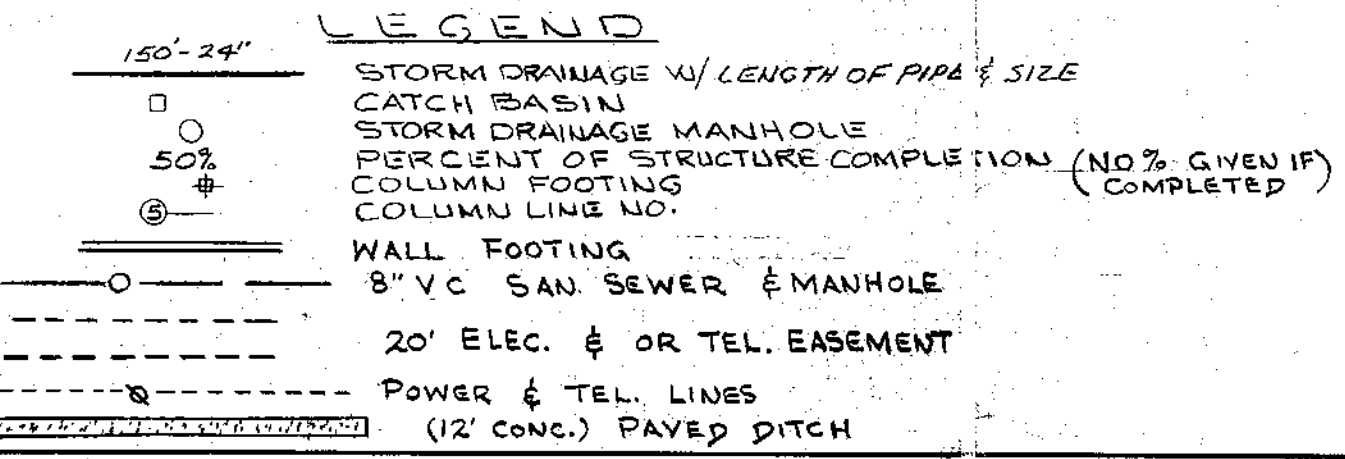
THAT THIS PRINT OF SURVEY CORRECTLY SHOWS THE LOCATION OF ALL BUILDINGS, STRUCTURES AND OTHER IMPROVEMENTS SITUATED ON THE PREMISES HEREIN DESCRIBED AND THEREON, EXCEPT AS SHOWN HEREBON:

- THERE ARE NO VISIBLE EASEMENTS OR RIGHTS OF WAY ACROSS SAID PREMISES;
- EASEMENTS OR RIGHTS OF WAY OF WHICH THE UNDERSIGNED HAS BEEN ADVISED;
- PARTY WALLS WITH OR ENCROACHMENTS UPON, ADJOINING PREMISES, STREETS OR ALLEYS, OR ANY OF SAID BUILDINGS, STRUCTURES OR OTHER IMPROVEMENTS;
- ENCROACHMENTS UPON THE PREMISES HEREIN DESCRIBED.

55.94 AC. TOTAL  
 1.97 AC. MERCANTILE TR.  
 53.97 AC. NET

MORTGAGE SURVEY

SURVEY FOR  
 FIRST HARTFORD REALTY CORPORATION  
 GREENVILLE COUNTY, SOUTH CAROLINA  
 SCALE 1"=100' - DATE 1-21-77  
 UPDATED 5-13-77  
 UPDATED 7-14-77

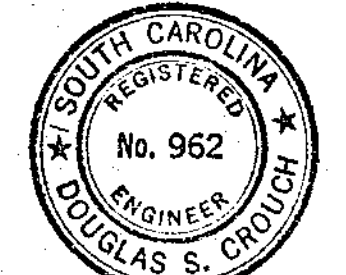


*Douglas S. Crouch*  
 REG. ENG. & L.S. #962 S.C.

PIEDMONT ENGINEERS-ARCHITECTS-PLANNERS  
 GREENVILLE, S. C.

8 3 45 AM '77  
 9 2 12 AM '77

4.00 M  
 2.00 M



MICROFILMED