

LINE BY C. WEBB, R.L.S., MAY, 1971

W 00° 1'

372 98 30 0 3

W 00° 2'

372 98 30 0 3

N 62° 14' E 269.12

O.I.P.

562.5

I.P.

N 60° 05' E

763.78

(ADJUSTED DISTANCE TOTAL)

(CORNER ESTABLISHED PER AGREEMENT OF D.C. WATSON AND FAIRVIEW CHURCH.)

N 12° 45' N

1216.49

- D.C. WATSON -

(PLAT BY J.A. ADAMS)

42.18 Ac. Gross

B.H. 568.2

S 32° 17' E

1087.06 TOT

(813.16)

NEVE

COBLE

(273.9)

STAKE

S 20° 45' W
133.7

(OLD STUMP CORNER
BY L. GODSEY, R.L.S., 1-29-70)

S 9° 44' W
708.71

NOW OR FORM. LEWIS

6069

85 25 19 0

200 00 00

60-50

MICROFILMED

J.F. WEATHERS PROPERTY

FAIRVIEW GREENVILLE COUNTY S.C.

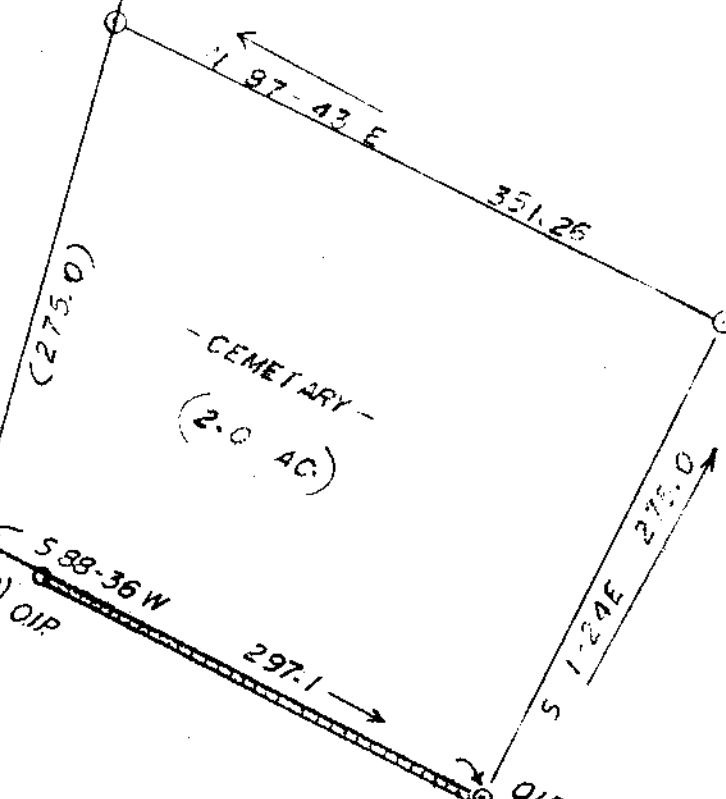
SCALE: 1"=100'

J. L. MONTGOMERY, III, R.L.S.

JULY, 1977



FILED
GREENVILLE CO. S.C.
AUG 24 2 16 PM '77
DONNIE S. TANKERSLEY
R.M.C.



- CEMETARY -
(2.0 AC)

- FAIRVIEW PRESBYTERIAN CHURCH -

O. STONE
N 73° 11' W
1335

S 83° 49' W 205.42

S 4° 55' E 60.58

O.I.P.

O.I.P.

O.I.P.