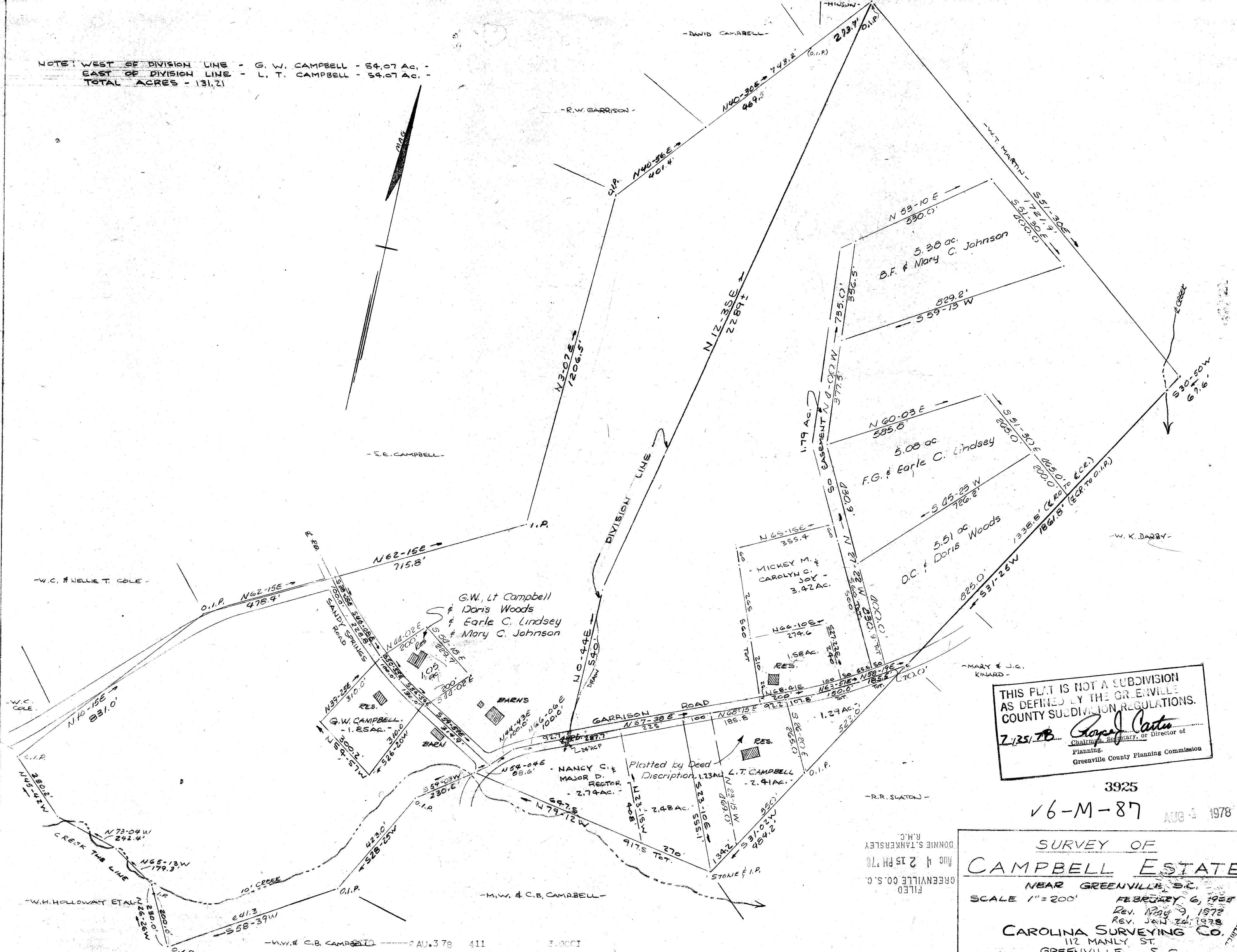


NOTE: WEST OF DIVISION LINE - G. W. CAMPBELL - 54.07 AC. -
 EAST OF DIVISION LINE - L. T. CAMPBELL - 54.07 AC. -
 TOTAL ACRES - 131.21



THIS PLAT IS NOT A SUBDIVISION
 AS DEFINED BY THE GREENVILLE
 COUNTY SUBDIVISION REGULATIONS.
 2/25/78 *Royce Carter*
 Chairman, Secretary, or Director of
 Planning,
 Greenville County Planning Commission

3925
 V6-M-87 AUG 3 1978

SURVEY OF
CAMPBELL ESTATE
 NEAR GREENVILLE, S.C.

SCALE 1" = 200'

FILED
 GREENVILLE CO. S. C.
 AUG 4 2 15 PM '78
 DONNIE S. TANKERSLEY
 R.M.C.

FEBRUARY 6, 1958
 Rev. May 9, 1972
 Rev. Jan 26, 1978

CAROLINA SURVEYING CO.
 112 MANLY ST.
 GREENVILLE, S. C.

R.B. Bruce
 RLS #1952