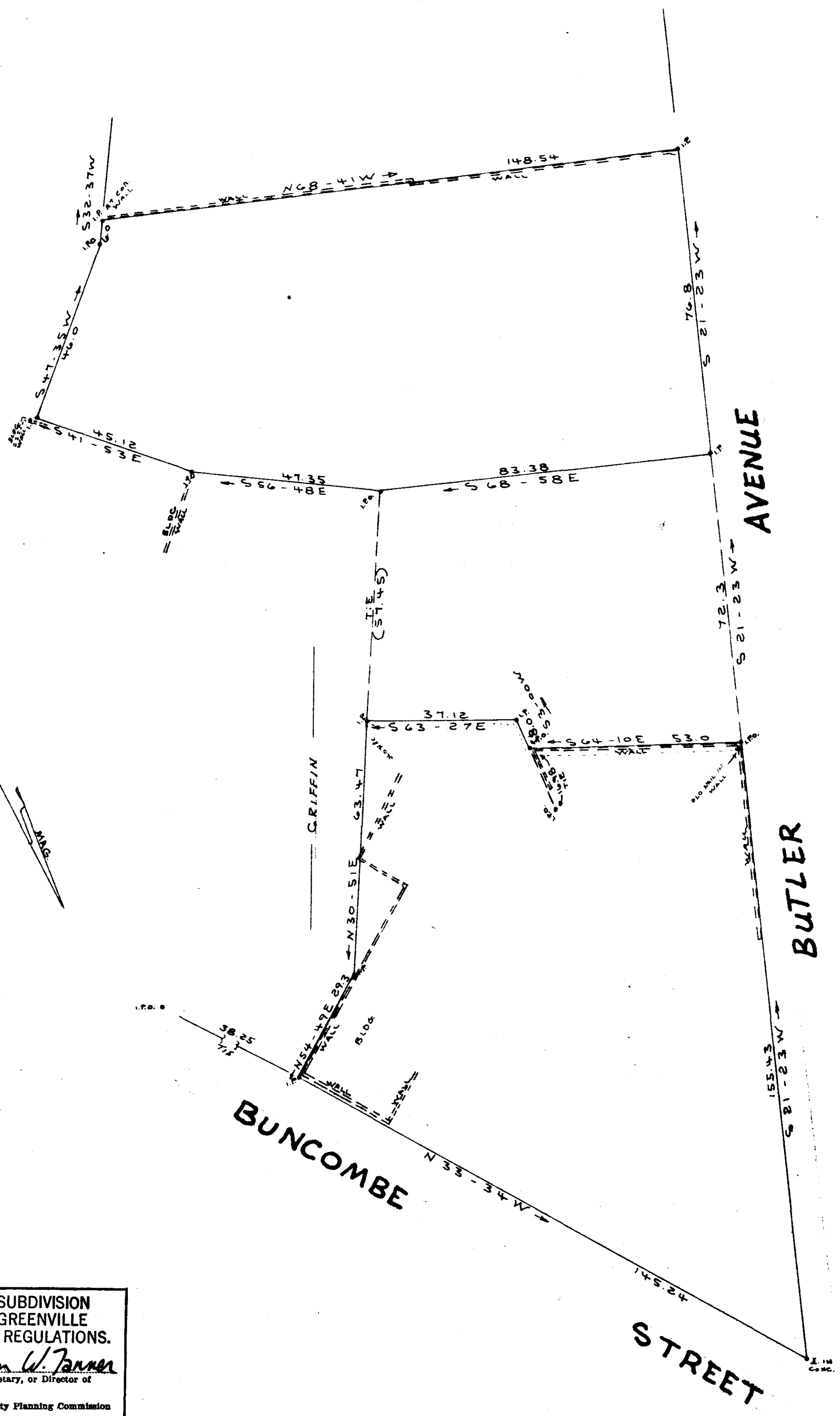


MICROFILMED

PLAT 5
/ 511 ORIGINAL 1150



THIS PLAT IS NOT A SUBDIVISION
AS DEFINED BY THE GREENVILLE
COUNTY SUBDIVISION REGULATIONS.
10/16/80 *Stephen W. Tanner*
Chairman, Secretary, or Director of
Planning.
Greenville County Planning Commission

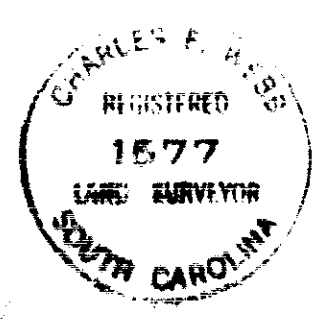
PLAT FOR
BERTIE C. ECKFORD PUTNAM
IN THE CITY OF GREENVILLE
GREENVILLE COUNTY S.C.
WEBB SURVEYING & MAPPING CO.
SCALE 1" = 20' OCT. 1980

FILED
GREENVILLE CO. S.C.
OCT 16 3 26 PM '80
DONNIE S. TANKERSLEY
R.M.C.

7-4-93

OCT 16 1980

THIS PLAT FOR RECORDING



Charles F. Webb
REGISTERED LAND SURVEYOR
SOUTH CAROLINA