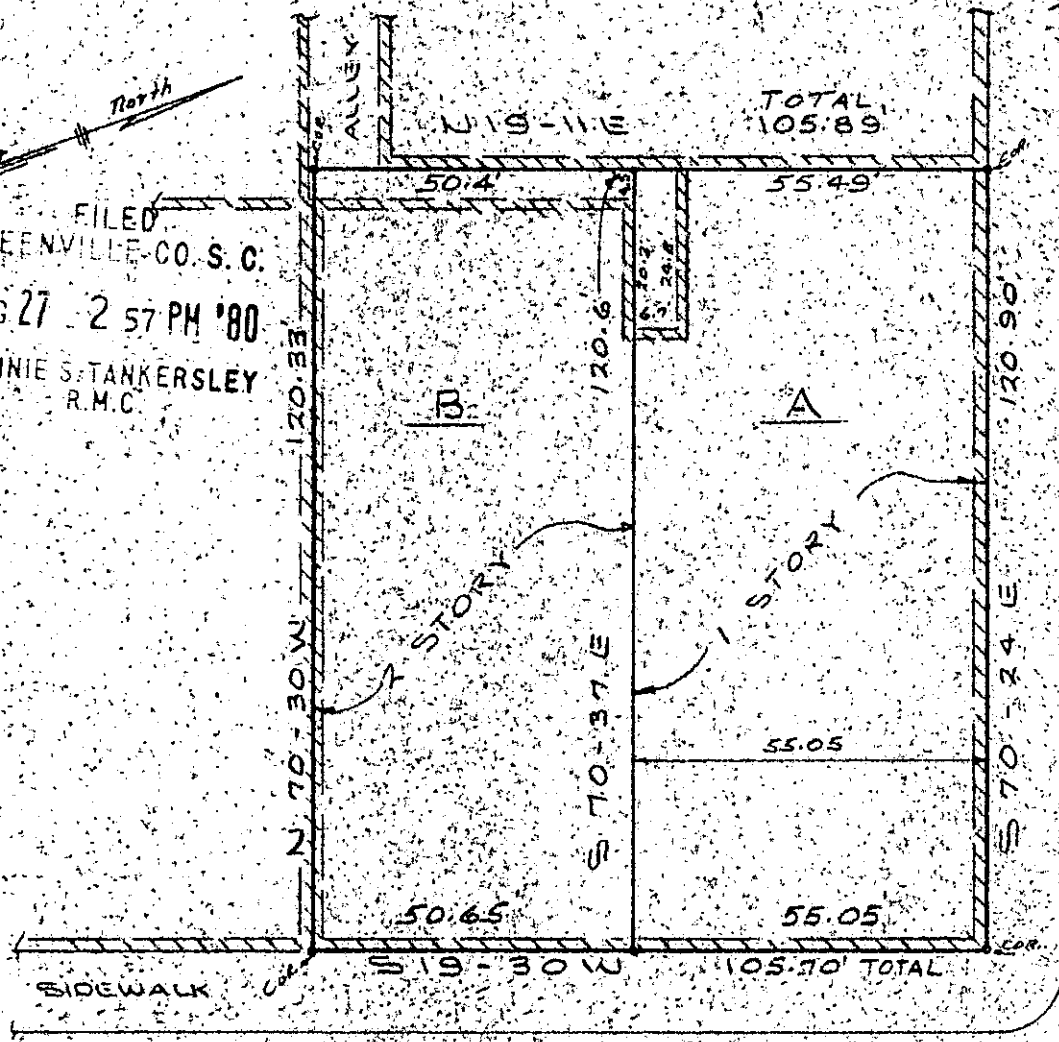


MICROFILMED

Mag North

FILED
GREENVILLE CO. S. C.
AUG 27 2 57 PM '80
DONNIE S. TANKERSLEY
R.M.C.



W. WASHINGTON ST.

S. MAIN ST.

THIS PLAT IS NOT A SUBDIVISION
AS DEFINED BY THE GREENVILLE
COUNTY ORDINANCE REGULATING
8/27/80 *F. J. Fisher*
Chairman, Secretary, or Director of
Planning
Greenville County Planning Co.

PROPERTY OF
MAULDIN ESTATE AUG 27 1980

GREENVILLE, S. C.
1" = 30'
JULY 23, 1973
REV. AUG. 19, 1980

6069

8-D-84 ✓

I CERTIFY THAT THIS PLAT WAS PREPARED
FROM AN AERIAL FIELD SURVEY MADE UNDER
MY SUPERVISION
Archie W. Thompson
ARCHIE W. THOMPSON R.S. NO. 2616

PIEDMONT ENGINEERS · ARCHITECTS · PLANNERS
GREENVILLE, S. C.

885
1 AUG 27 80