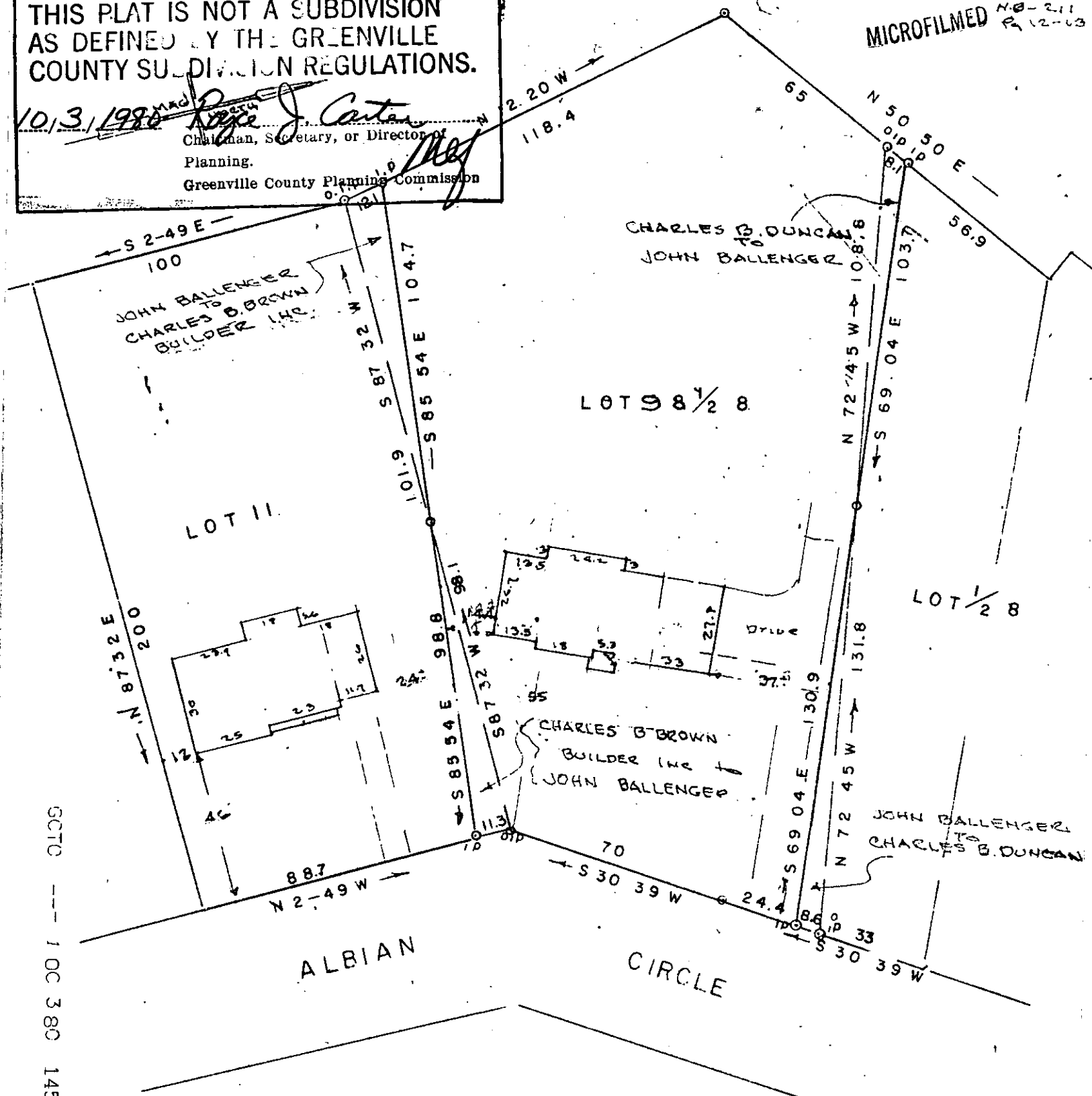


THIS PLAT IS NOT A SUBDIVISION
AS DEFINED BY THE GREENVILLE
COUNTY SUBDIVISION REGULATIONS.

10/3/1980
Rege J. Carter
 Chairman, Secretary, or Director of
 Planning.
 Greenville County Planning Commission

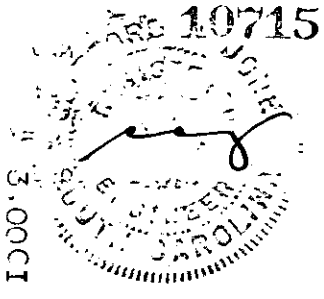
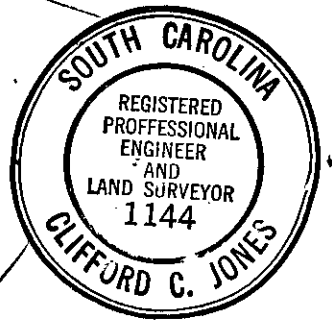
MICROFILMED N.B-211
 P. 12-63



5070 --- 1 00 380 1453

REVISION OF
 LOTS - 11, 9 & 1/2
 BEREA HEIGHTS
 RMCO. PLAT BK S 102 - EE 89

GREENVILLE CO. S.C.
 DONNIE S. TANKERSLEY
 SCALE 1" = 40' FEB 25-1980



OCT 3 2 09 PM '80

8-G-44