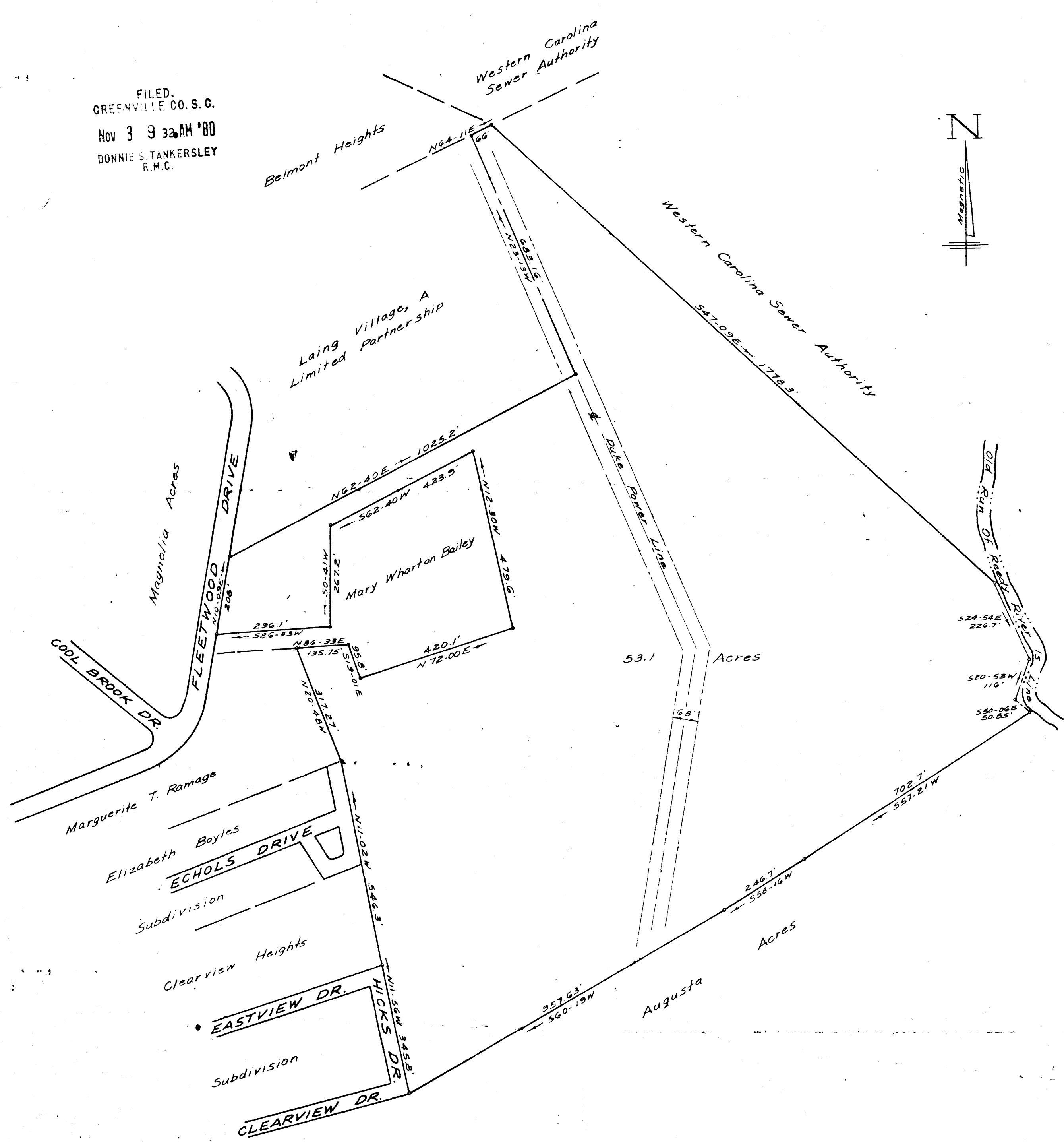
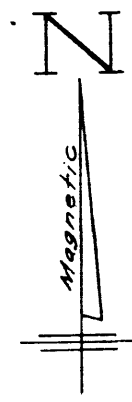


FILED.
GREENVILLE CO. S. C.
Nov 3 9 32 AM '80
DONNIE S. TANKERSLEY
R.M.C.



PROPERTY OF
T. WALTER BRASHIER
GREENVILLE CO., S.C.

THIS PLAT IS NOT A SUBDIVISION
AS DEFINED BY THE GREENVILLE
COUNTY SUBDIVISION REGULATIONS.
Nov 3, 1980 *Stephen W. Zonne*
Chairman, Secretary, or Director of
Planning.
Greenville County Planning Commission

MAY, 1980

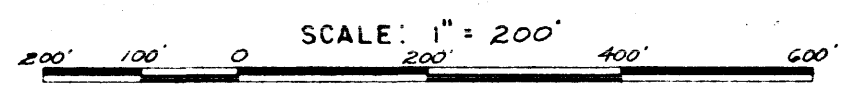
8-I-1

13997

NOV 3 1980

Note: Plat Compiled From Deeds
And Plats By Others On Record
In R.M.C. Office, Greenville Co., S.C.

W. R. WILLIAMS, JR.
ENGINEER/SURVEYOR
P.E. & L.S. No. 3979
15 S. MAIN STREET
TRAVELERS REST, S.C.
29690



I hereby certify that the ratio of precision of the
field survey is 1/N/A as shown hereon and the area
was determined by DMD method of area calculation.

W.R. Williams Jr. P.E. & L.S. No. 3979