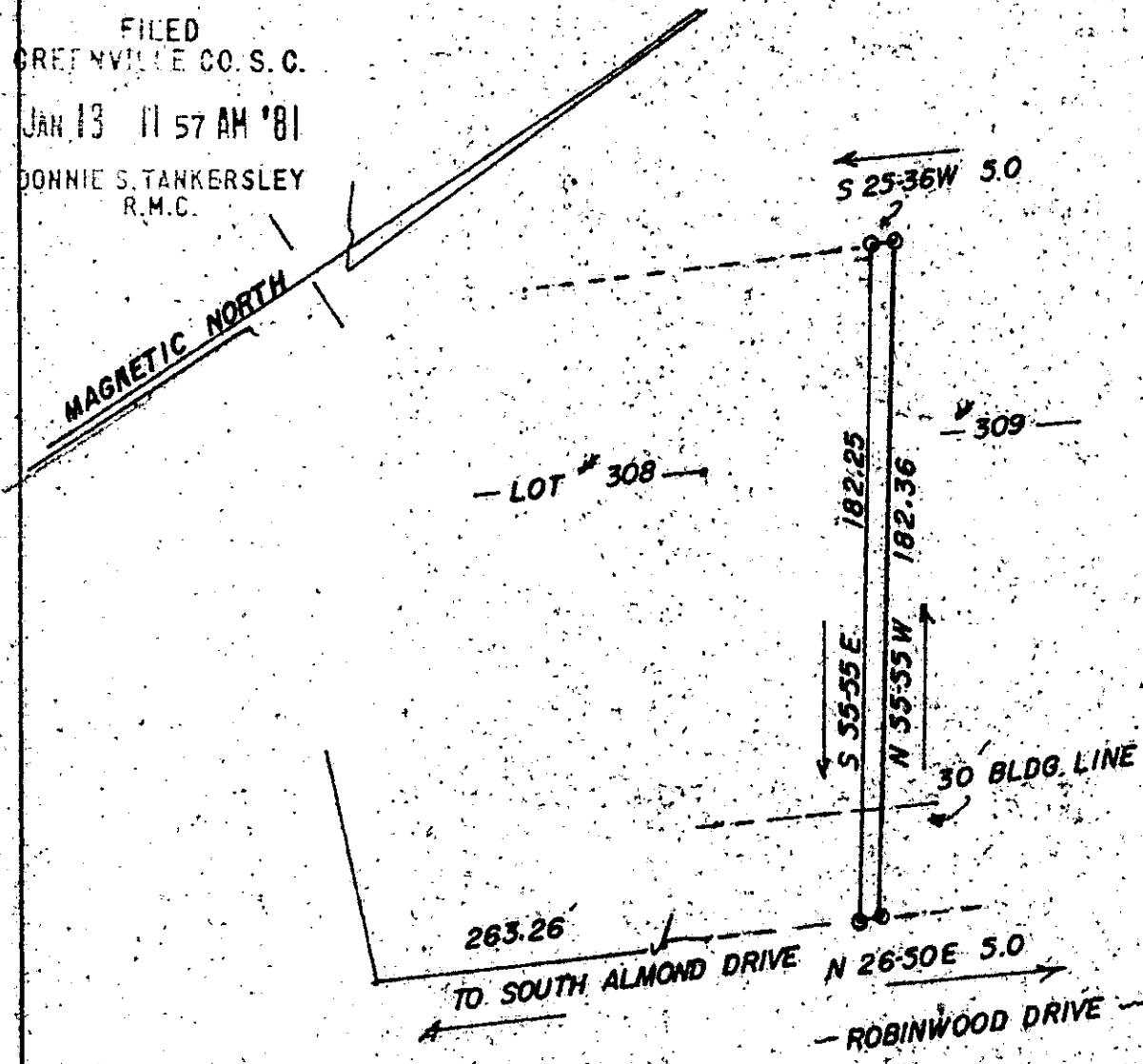


MICROFILMED

"THIS IS TO CERTIFY THAT THE ERROR OF CLOSURE OF THIS SURVEY IS 1 IN 10,000<sup>+</sup>, AND THE ACREAGE HAS BEEN DETERMINED BY THE D.M.D. METHOD" *P.R. M. 175*

1 P.S. AT ALL CORNERS

FILED  
GREENVILLE CO. S.C.  
JAN 13 11 57 AM '81  
DONNIE S. TANKERSLEY  
R.M.C.



8-5-97 ✓

20198

JAN 13 1981

400 M

5358 M 13E

PLAT ILLUSTRATES N.E. PORTION OF LOT NO. 308:		
SCALE: 1-50	APPROVED BY: <i>P.R. Montgomery, Jr.</i>	DRAWN BY: <i>AM</i>
DATE: 1-8-81		REVISED
LOCATED IN POINSETTIA SUBDIVISION - SECTION FIVE		
SIMPSONVILLE, S.C. GREENVILLE COUNTY		DRAWING NUMBER: 00-7-81