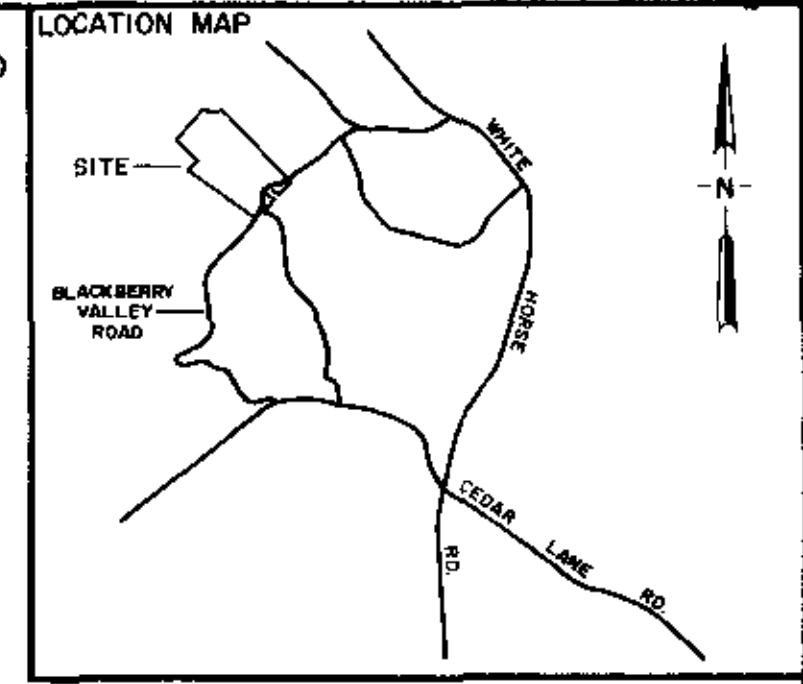
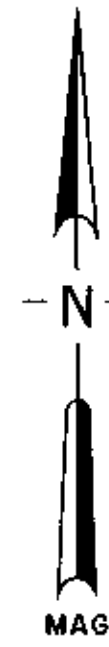


REFERENCES: TAX MAP 509.1, BLOCK 1, LOTS 2,3,4,11,13

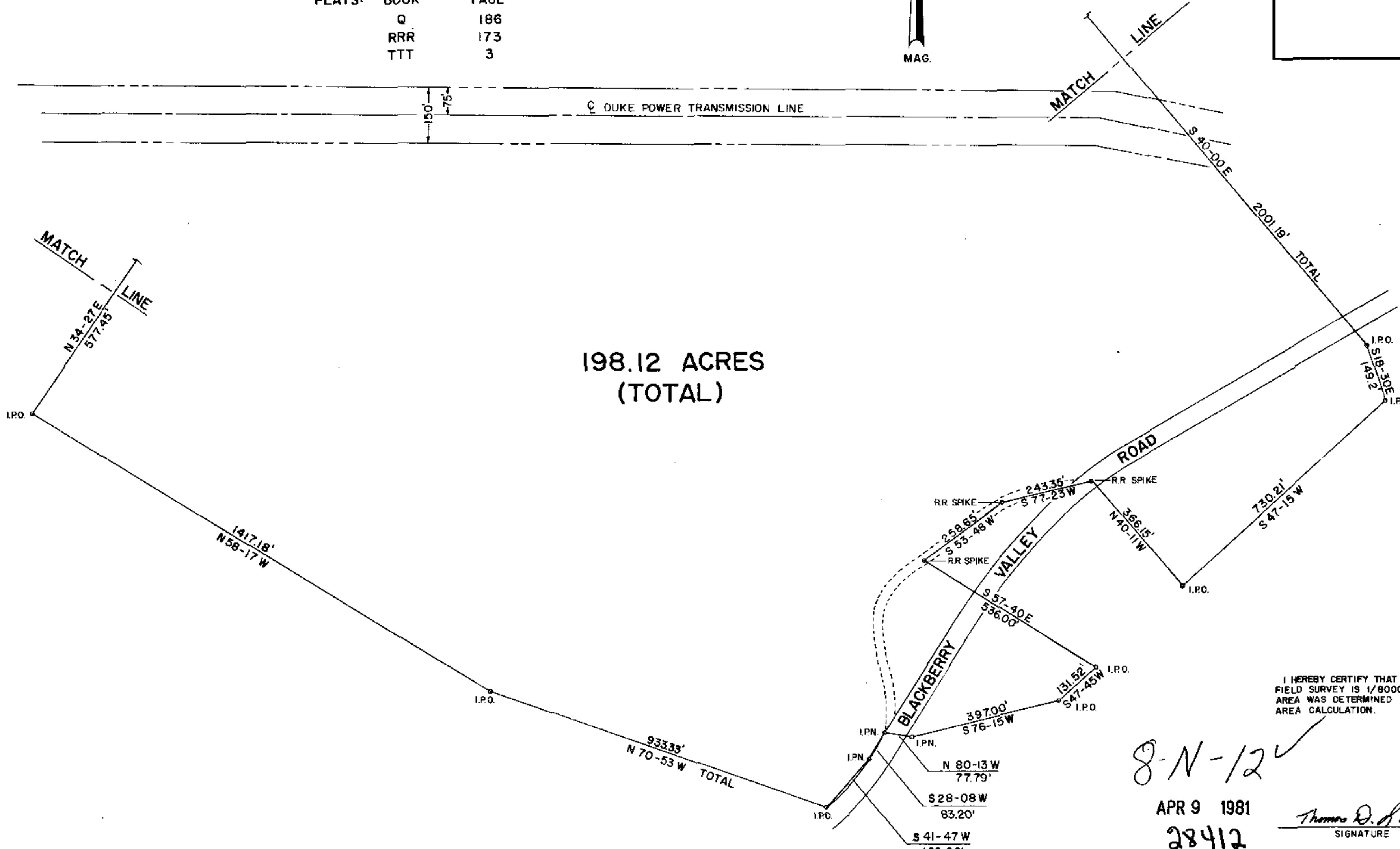
DEEDS:	BOOK	PAGE
	1066	641
	1066	644
	1029	882
	1013	252
	1112	211
	884	190
PLATS:	BOOK	PAGE
	Q	186
	RRR	173
	TTT	3

1" = 200' scale



DUKE POWER TRANSMISSION LINE

198.12 ACRES (TOTAL)



I HEREBY CERTIFY THAT THE RATIO OF PRECISION OF THE FIELD SURVEY IS 1/8000 AS SHOWN HEREON AND THE AREA WAS DETERMINED BY THE COORDINATE METHOD OF AREA CALCULATION.

8-N-12
APR 9 1981
28412

Thomas D. Lindsey
SIGNATURE
9-2-1980
DATE

VIRGINIA T. WHITMIRE
GREENVILLE COUNTY TREASURER
FEE EXEMPT
COUNTY DEPARTMENT

FILED
APR 11 1981
GREENVILLE COUNTY S.C.
DONNIE C. KAMERSLEY
R.M.C.

BLACKBERRY VALLEY LANDFILL		
SCALE: 1" = 200'	APPROVED BY	DRAWN BY TDL
DATE: 27 AUG 80		SHEET 1 OF 2
SURVEYED FOR GREENVILLE COUNTY		
LINDSEY & ASSOCIATES		DRAWING NUMBER 1284