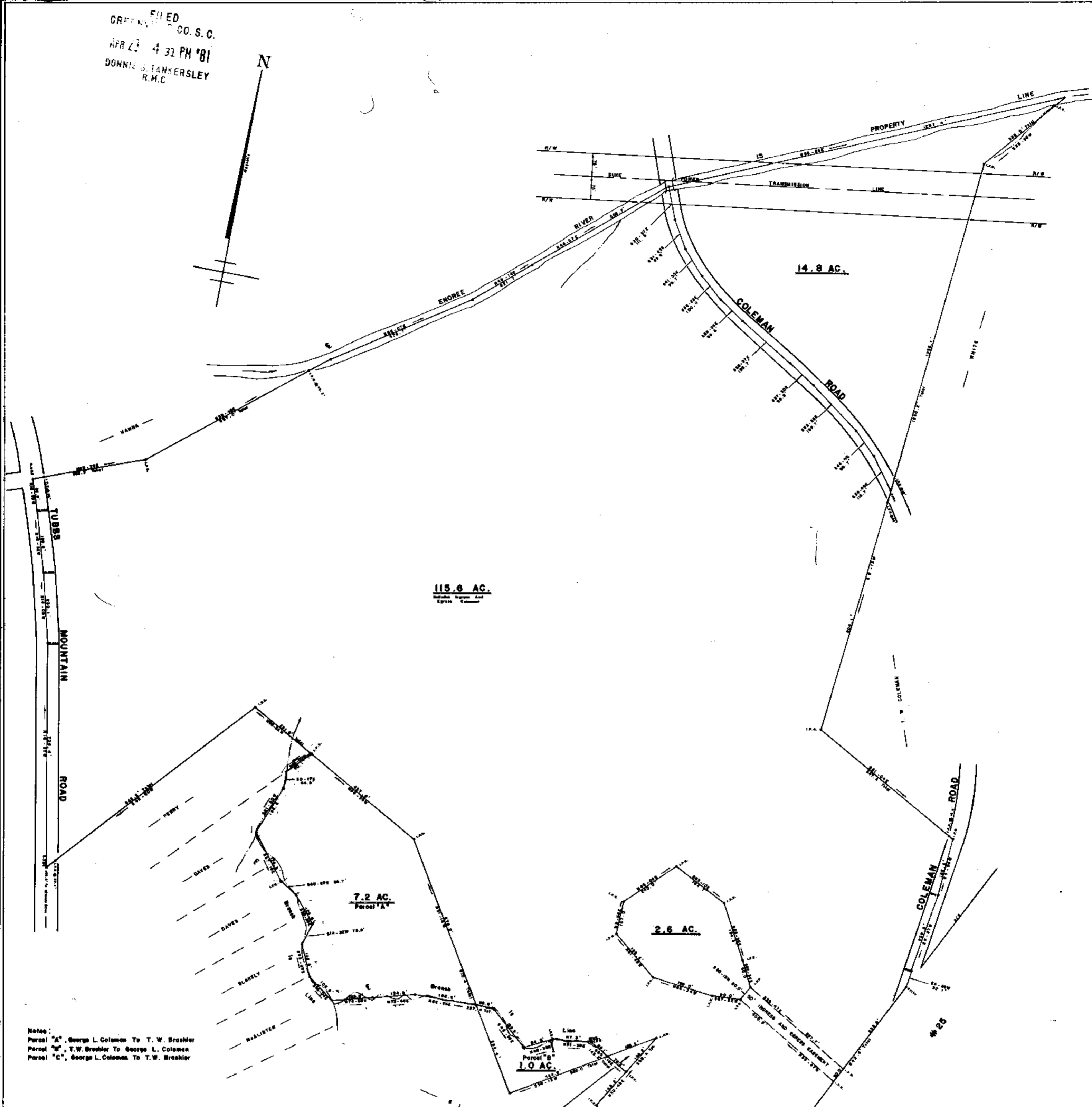


FILED
GREENVILLE CO. S.C.
APR 23 4 32 PM '81
DONNIE S. TANKERSLEY
R.M.C.



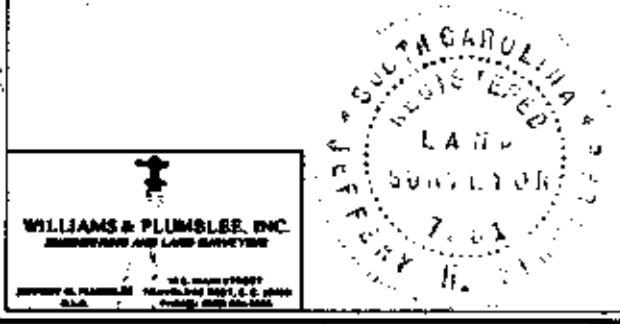
Notes:
Parcel "A", George L. Coleman To T. W. Brashier
Parcel "B", T. W. Brashier To George L. Coleman
Parcel "C", George L. Coleman To T. W. Brashier

SURVEY FOR
T. WALTER BRASHIER
TRAVELERS REST - GREENVILLE COUNTY
SOUTH CAROLINA
MARCH 31, 1981

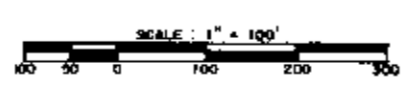
8-N-18

29810

**THIS PLAT IS NOT A SUBDIVISION
AS DEFINED BY THE GREENVILLE
COUNTY SUBDIVISION REGULATIONS.**
4/23/81 *Rachel Carter*
Chairman, Secretary, or Director of
Planning
Greenville County Planning Commission



WILLIAMS & FLIMBLE, INC.
SURVEYORS AND LAND SURVEYORS



I hereby certify that the data of this plat are true and correct as shown hereon and that the same were obtained by a true and correct survey.

502.3-1-13, 13.1