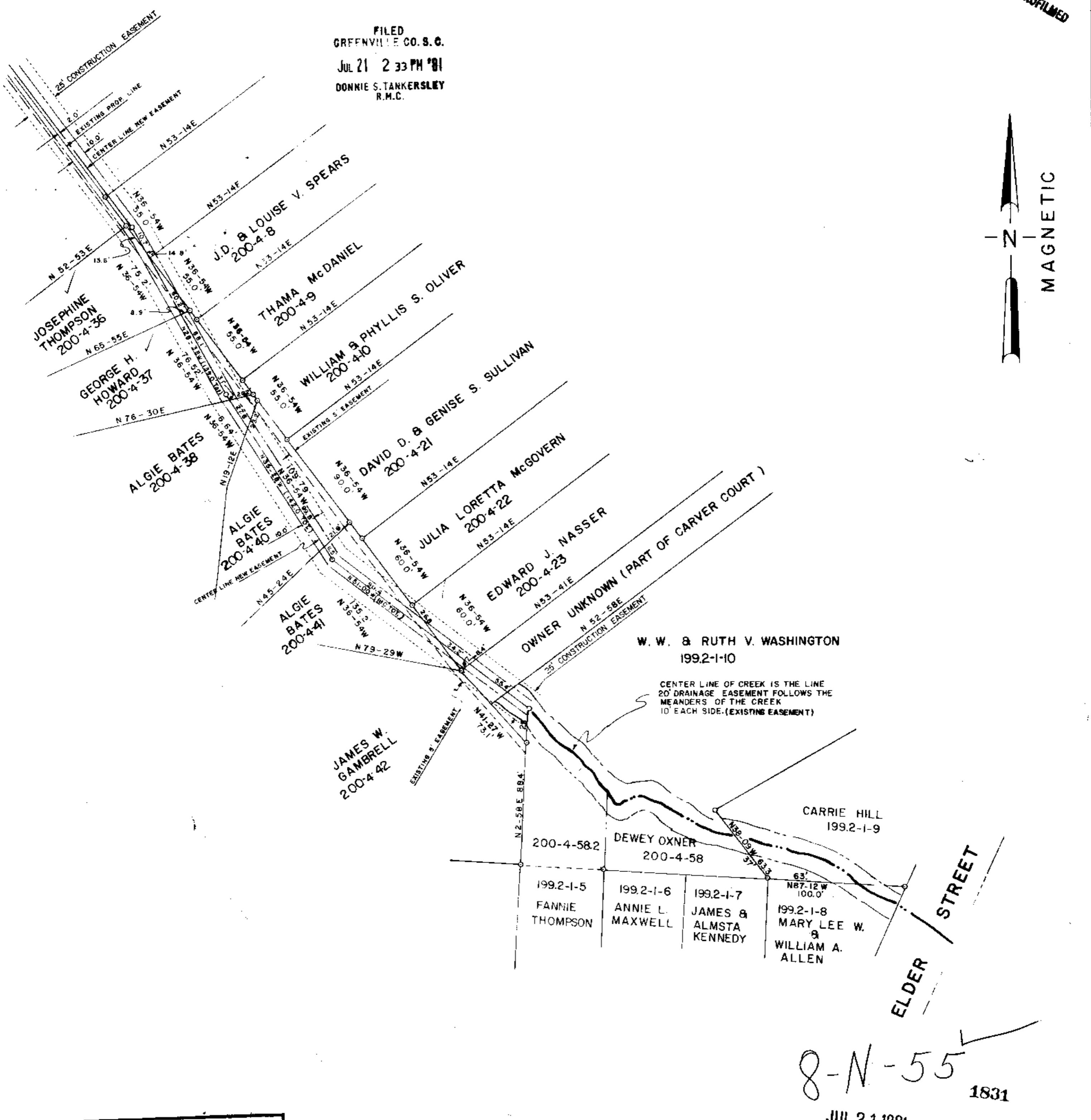
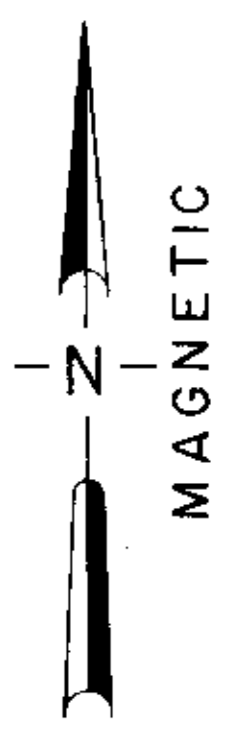


MICROFILMED

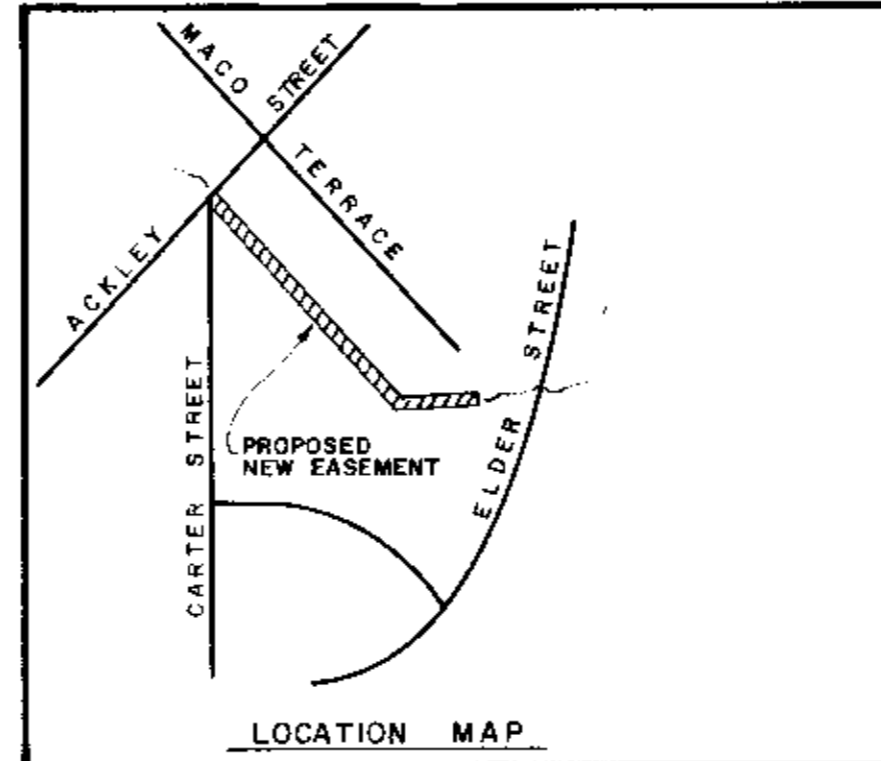
FILED
GREENVILLE CO. S. C.
Jul 21 2 33 PM '81
DONNIE S. TANKERSLEY
R.M.C.



THIS PLAT IS NOT A SUBDIVISION AS DEFINED BY THE GREENVILLE COUNTY SUBDIVISION REGULATIONS.
7/21/81 *Stephen W. Tanner*
Chairman, Secretary or Director of Planning
Associate Planner
Greenville County Planning Commission



Thomas D. Lindsey



STORM DRAIN EASEMENT
CITY OF GREENVILLE STREET IMPROVEMENTS

CARTER ST. TO ELDER ST.
GREENVILLE SOUTH CAROLINA

Scale bar: 0 50 100 feet. Below it, a table with columns: TDL, TDL, TDL, 29 MAY 80, 1" = 50'

SHEET 2 OF 2

LINDSEY & ASSOCIATES
HWY. 253, RT. 1 TAYLORS, S.C. 29687

- REFERENCES
PB P-51
PB DD-71
PB U-107
PB A-187