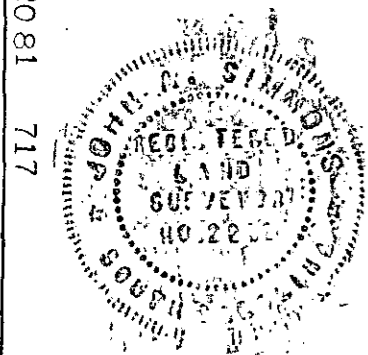
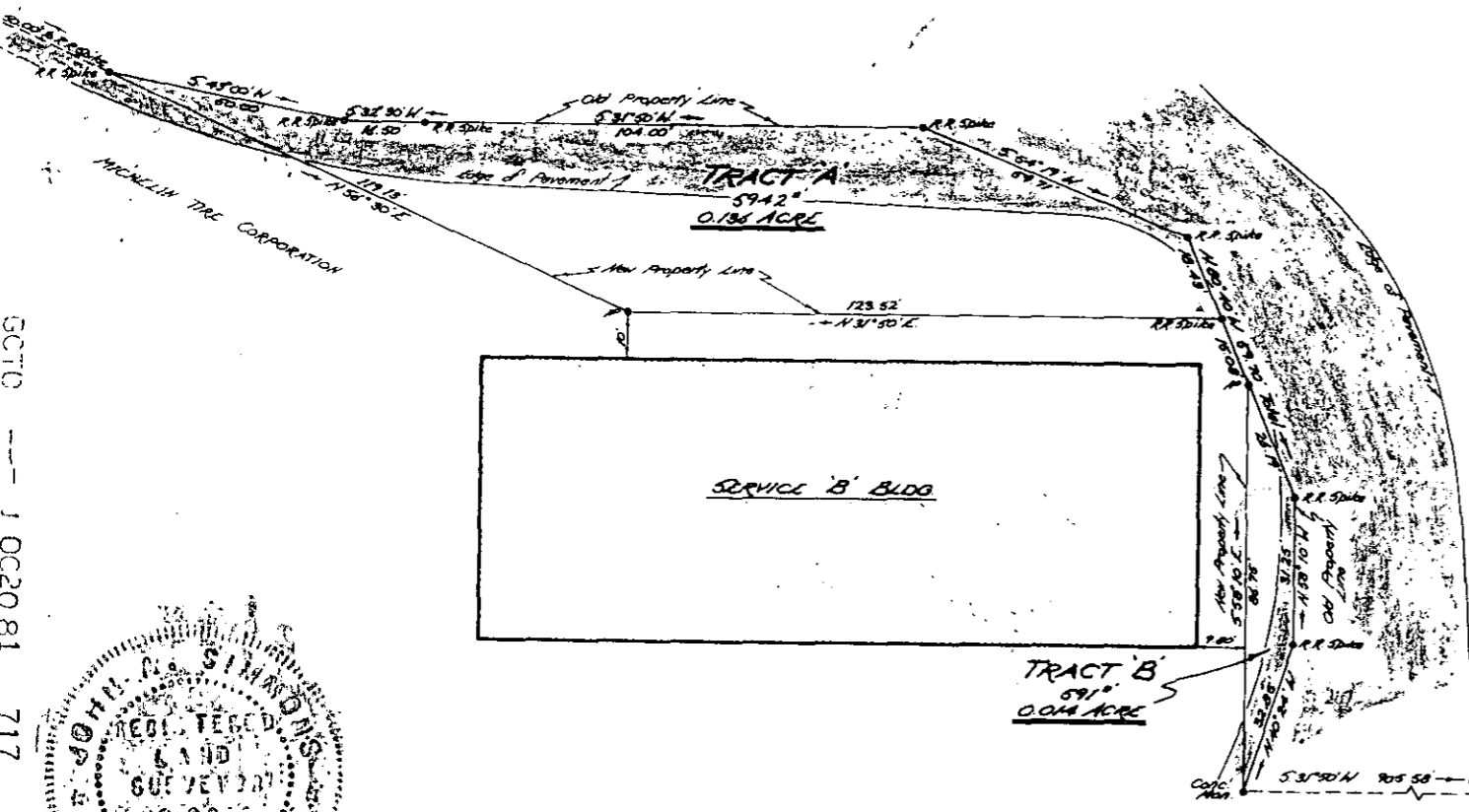


SECTION 10C2081 717

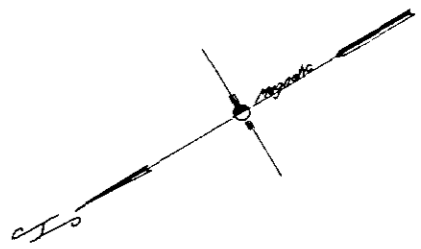


I hereby certify that the above survey is correct.  
*[Signature]*  
Reg. Surveyor #2212



MICHELIN AMERICAS RESEARCH & DEVELOPMENT CORP.

FILED  
GREENVILLE COUNTY S.C.  
OCT 20 10 09 AM '81  
DORRIS STANMERSEBY  
R.M.C.C.



**THIS PLAT IS NOT A SUBDIVISION AS DEFINED BY THE GREENVILLE COUNTY SUBDIVISION REGULATIONS.**  
Oct 20, 1981 *[Signature]*  
Chairman, Secretary, or Director of Planning,  
Greenville County Planning Commission

MICHELIN TIRE CORPORATION

PROPERTY EXCHANGE  
BETWEEN  
MICHELIN TIRE CORPORATION  
&  
MICHELIN AMERICAS RESEARCH & DEVELOPMENT CORP.  
Located approx 6 miles South of Greenville  
GREENVILLE COUNTY, SOUTH CAROLINA  
SCALE: 1" = 40 FEET AUG 10, 1981

9956

*[Handwritten signature]*

Tri-State Surveyors  
109 Few Street  
Greer, S. C. 29651

APPROVED