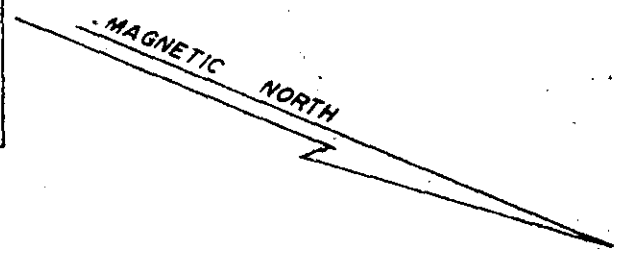


MICROFILMED

"THIS IS TO CERTIFY THAT THE ERROR OF CLOSURE OF THIS SURVEY IS 1 IN COMPILED, AND THE ACREAGE HAS BEEN DETERMINED BY THE D.M.D. METHOD:" P. L. M. III



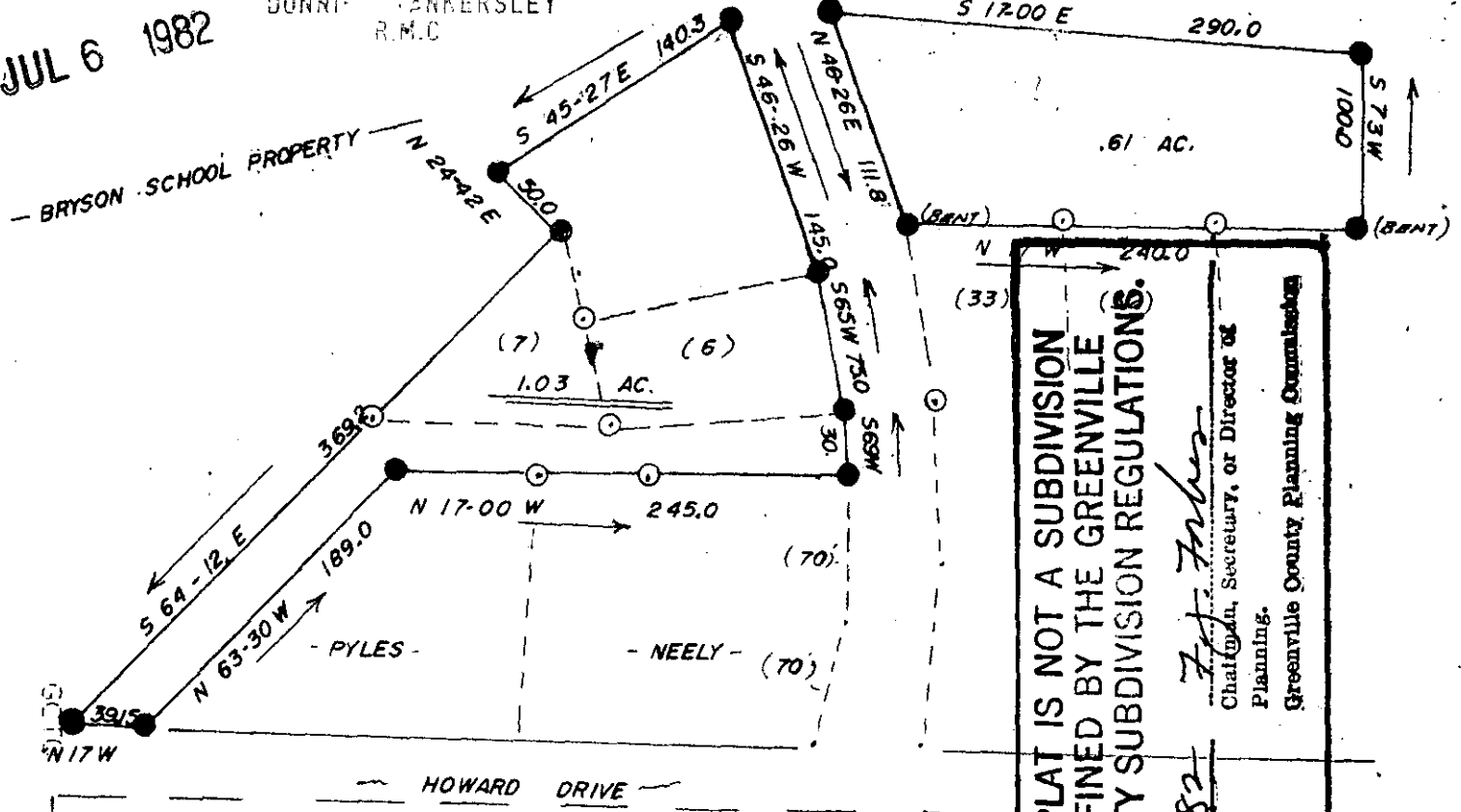
"THIS PLAT TO BE RECORDED IN THE R.M.C. OFFICE."

FILED GREENVILLE COUNTY S.C. POINSETT REALTY COMPANY

JUL 3 37 PM '82

DONNIE BANKERSLEY R.M.C.

JUL 6 1982



THIS PLAT IS NOT A SUBDIVISION AS DEFINED BY THE GREENVILLE COUNTY SUBDIVISION REGULATIONS.
7/6/82
J. J. Fisher
Chairman, Secretary, or Director of Planning.
Greenville County Planning Commission

JUL 1982 716

IRON PINS FOUND AT ALL CORNERS

413

✓ 9-C-45

J. L. MONTGOMERY, III
Registered Professional Surveyor
NORTH MAPLE STREET
SIMPSONVILLE, S.C. 2968



SHADYOAKS BAPTIST CHURCH

SCALE 1"=100'	APPROVED BY <u>J. L. Montgomery III</u>	DRAWN BY <u>AM</u>
DATE AUG., 19 81		REVISED
SIMPSONVILLE & FT. INN, S.C.		GREENVILLE COUNTY
DRAFTED FROM PLAT BY: J.W.-J.R. CRAWFORD, 1961		DRAWING NUMBER