

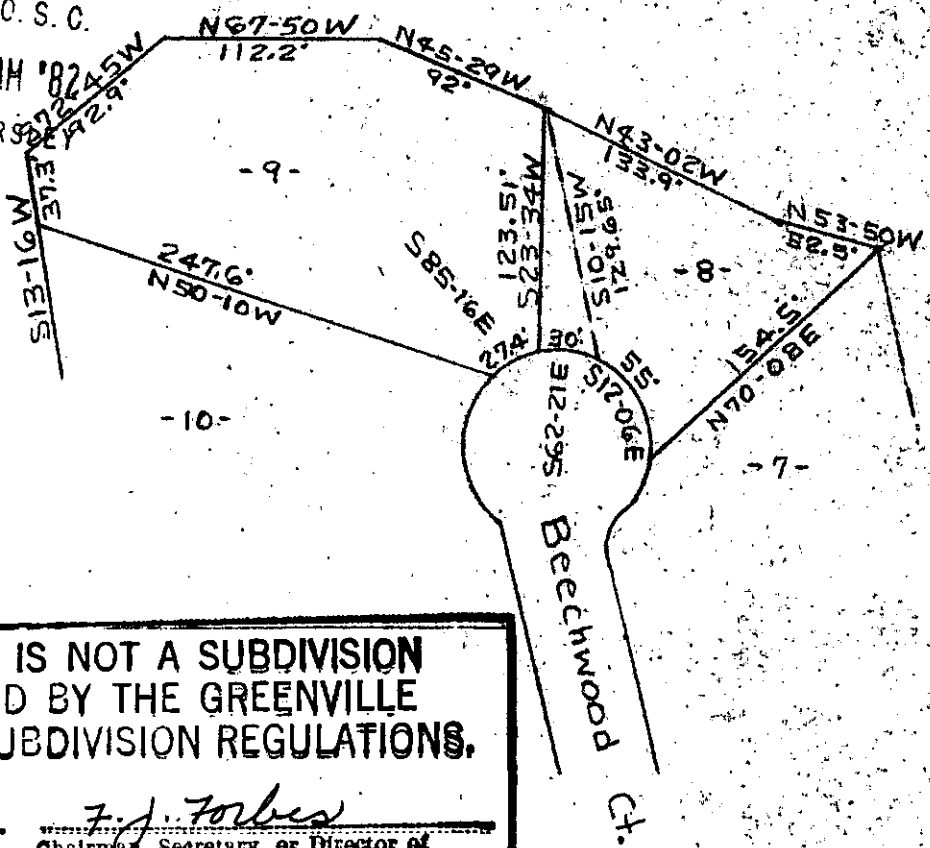
MICROFILMED

Magnetic

FILED
GREENVILLE CO. S. C.

OCT 5 10 18 AM '82

DONNIE S. TANKERS
H.M.C.



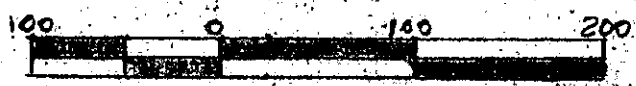
**THIS PLAT IS NOT A SUBDIVISION
AS DEFINED BY THE GREENVILLE
COUNTY SUBDIVISION REGULATIONS.**

10/5/82 F. J. Forbes
Chairman, Secretary, or Director of
Planning.
Greenville County Planning Commission

REVISION LOTS 8 & 9
HOLLY SPRINGS
GREENVILLE COUNTY
MAULDIN, S. C.
T. H. Walker Jr. Reg. L. S. 3182
300 Maple Dr. Mauldin, S. C.
Scale 1"=100' Sept. 25, 1982

OCT 5 1982

9-G-40



William B Griffith + Ellen C Griffith
8265

T. H. Walker Jr.

Ref. Plat. of Holly Springs Plat Bk. 4N at Pg. 5. See Plat for easements Etc.

30110 5 UC-3 82 021

3.00000