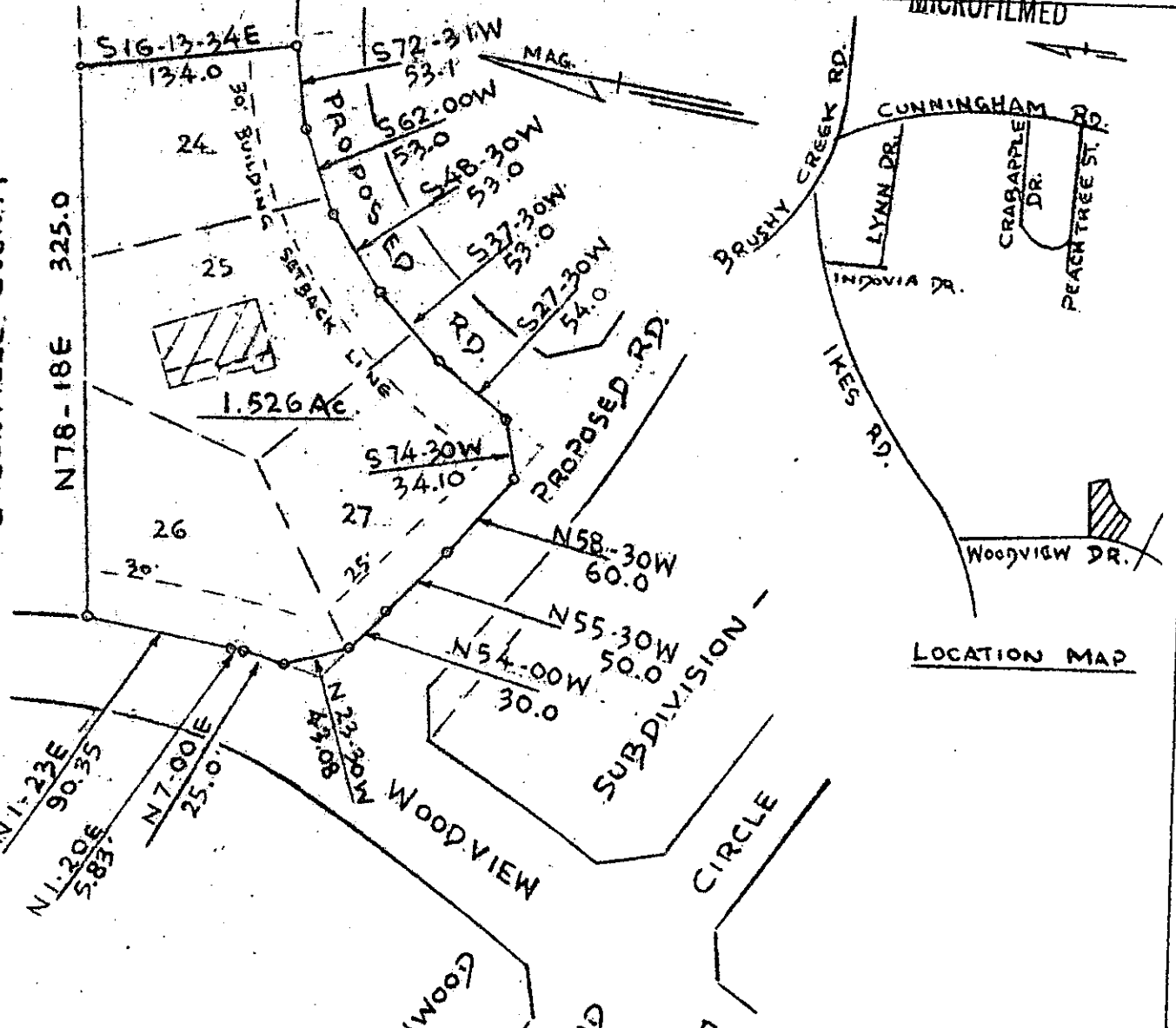


MICROFILMED

SCHOOL DISTRICT OF GREENVILLE COUNTY



LOCATION MAP

THIS PLAT IS NOT A SUBDIVISION AS DEFINED BY THE GREENVILLE COUNTY SUBDIVISION REGULATIONS.

12/22/83 *Stephen W. Jones*

Chairman, Secretary, or Director of Planning.
Greenville County Planning Commission

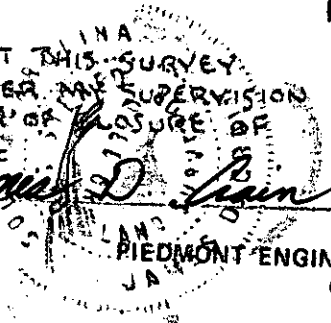
FILED
GREENVILLE CO. S.C.
DEC 22 2 48 PM '83
DUNNIE S. JARMERSLEY
R.M.C.

SURVEY FOR
FRANKLIN CLARK HOWELL
LOTS 24 Thru 27 - NORTHWOOD SECTION 4
GREENVILLE COUNTY, S.C.

SCALE 1"=100' DEC. 20, 1983

I CERTIFY THAT THIS SURVEY WAS MADE UNDER MY SUPERVISION WITH AN ERROR OF CLOSURE OF 1/10,000+

James D. Train



10-G-19

19897 ✓

RLS No. 3320
PIEDMONT ENGINEERS - ARCHITECTS & PLANNERS 1453
GREENVILLE, S. C.

0 - IRON PIN

3.00CI