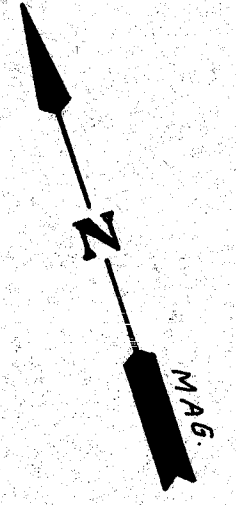


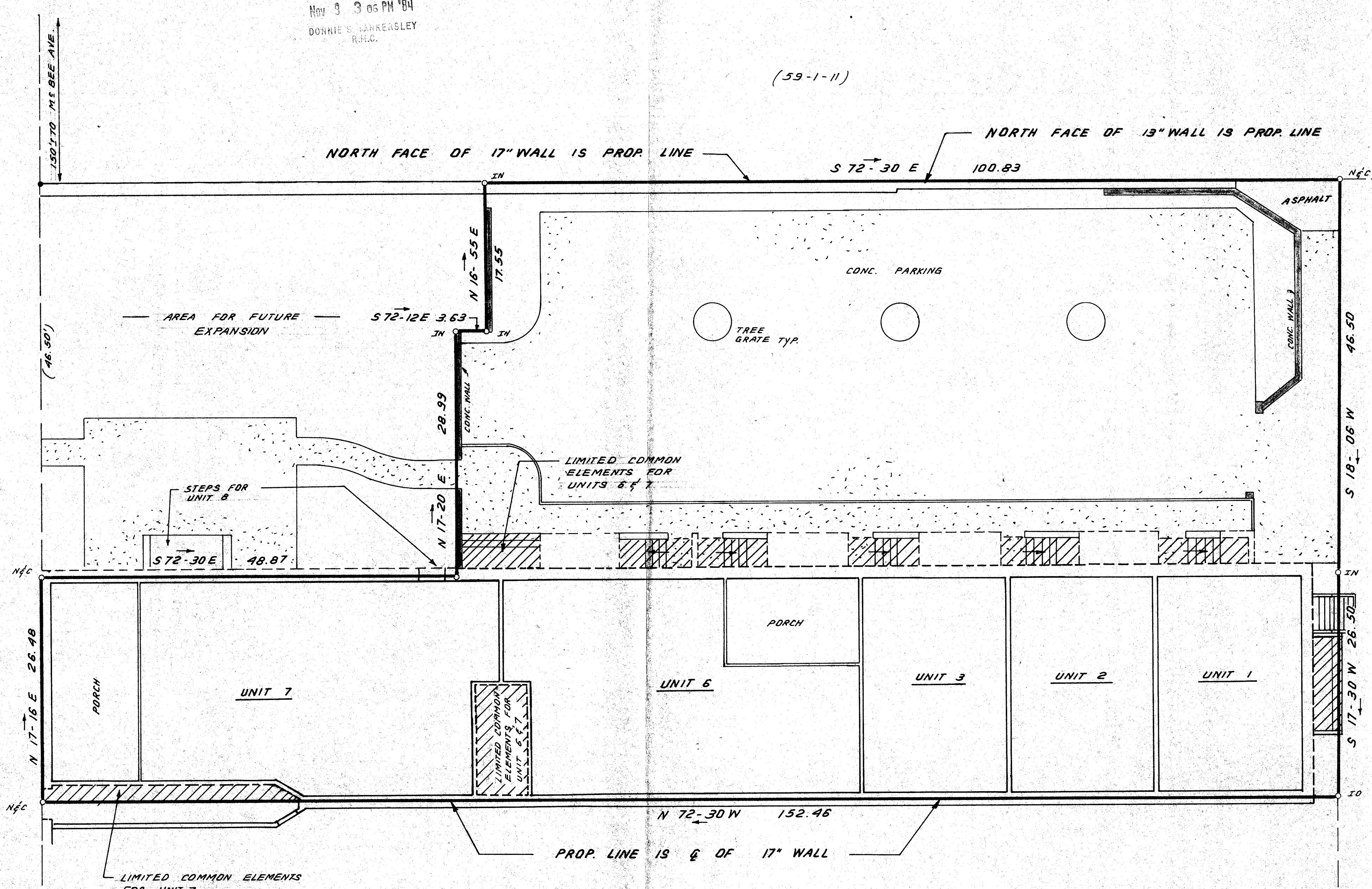
FILED  
GREENVILLE CO. S.C.  
Nov 9 3 05 PM '84  
DONNIE S. LANKERSLEY  
R.H.C.

(59-1-11)



SOUTH MAIN STREET

16' ALLEY



- LEGEND:
- COMMON ELEMENTS
  - UNIT BOUNDARY
  - ▨ LIMITED COMMON ELEMENTS

CARPENTERS BROS. N/F

✓ 142858

10-2-46

THIS PLAT IS NOT A SUBDIVISION  
AS DEFINED BY THE GREENVILLE  
COUNTY SUBDIVISION REGULATIONS.  
11.9.1984 John P. [Signature]  
Assistant, Secretary, or Director of  
Planning,  
Greenville County Planning Commission

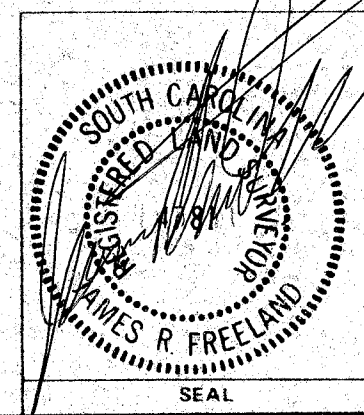


EXHIBIT "B"

STATE OF SOUTH CAROLINA  
GREENVILLE COUNTY

COURT SQUARE  
HORIZONTAL PROPERTY REGIME  
SECOND FLOOR  
UNIT 1; 2, 3, 6; 7

FREELAND & ASSOCIATES Engineers • Land Surveyors GREENVILLE, S.C.	
SURVEY	J.E.C.
DRAWN	B.R.
CHECK	
SCALE	1/8" = 1'-0"
DATE	10-16-84
DWG. NO.	11,902-C

