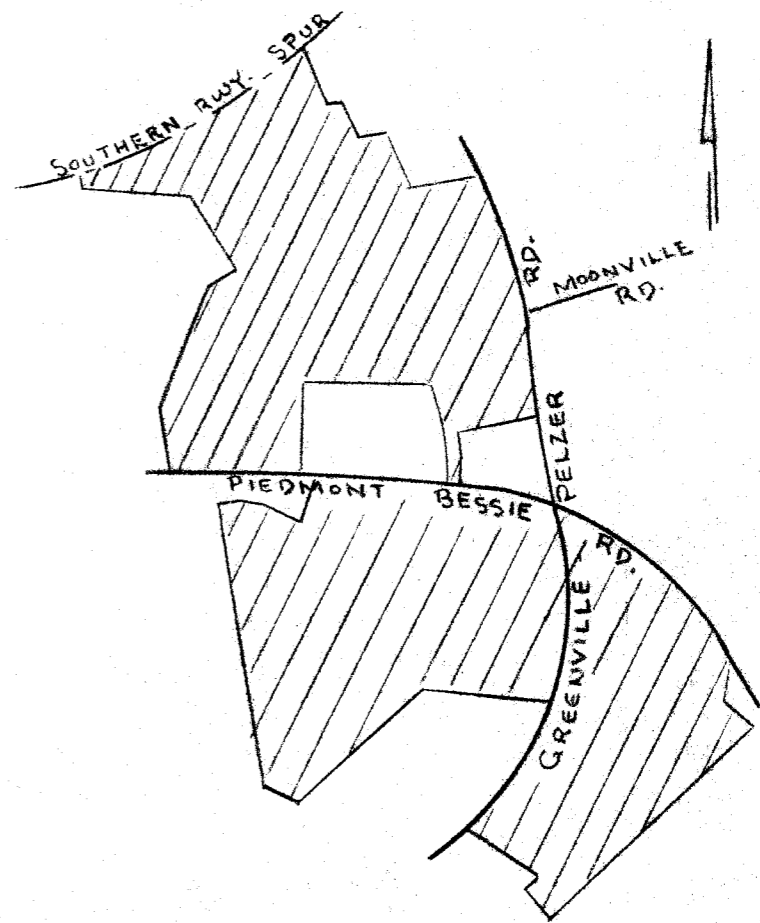
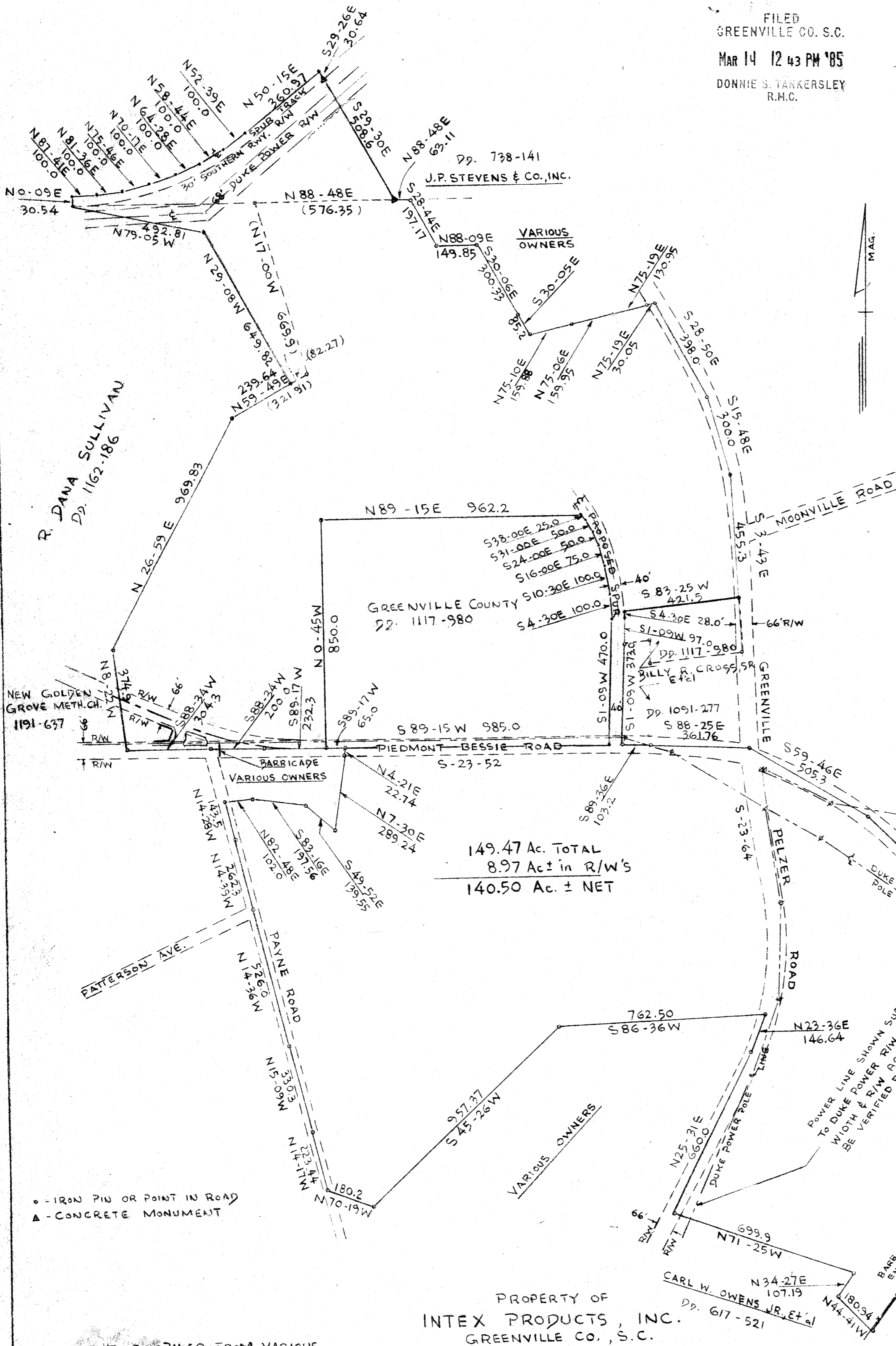


FILED  
GREENVILLE CO. S.C.  
MAR 14 12 43 PM '85  
DONNIE S. TANKERSLEY  
R.H.C.



LOCATION MAP

THIS PLAT IS NOT A SUBDIVISION  
AS DEFINED BY THE GREENVILLE  
COUNTY SUDDIVISION REGULATIONS.  
3/14/85 *Chip Little*  
Chairman, Secretary, or Director of  
Planning.  
Greenville County Planning Commission



○ - IRON PIN OR POINT IN ROAD  
▲ - CONCRETE MONUMENT

THIS PLAT COMPILED FROM VARIOUS  
DEEDS & PLATS. THE MAJOR PORTION  
ON PLAT FOR H.Z. JONES BY PIEDMONT  
ENGINEERS, ARCHITECTS & PLANNERS  
DATED DEC 14, 1974 & REV. JAN. 7, 1975  
WITH A FIELD UPDATE OF ALL PARCELS  
MADE MAR 13, 1985  
CLOSURE 1/5000 +

*James D. Cain*  
RLS No. 3320

SCALE 1" = 300'  
MAR. 13, 1985

PIEDMONT SURVEYORS  
PIEDMONT ENGINEERS, ARCHITECTS & PLANNERS  
GREENVILLE, S.C.

11-G-31

27008