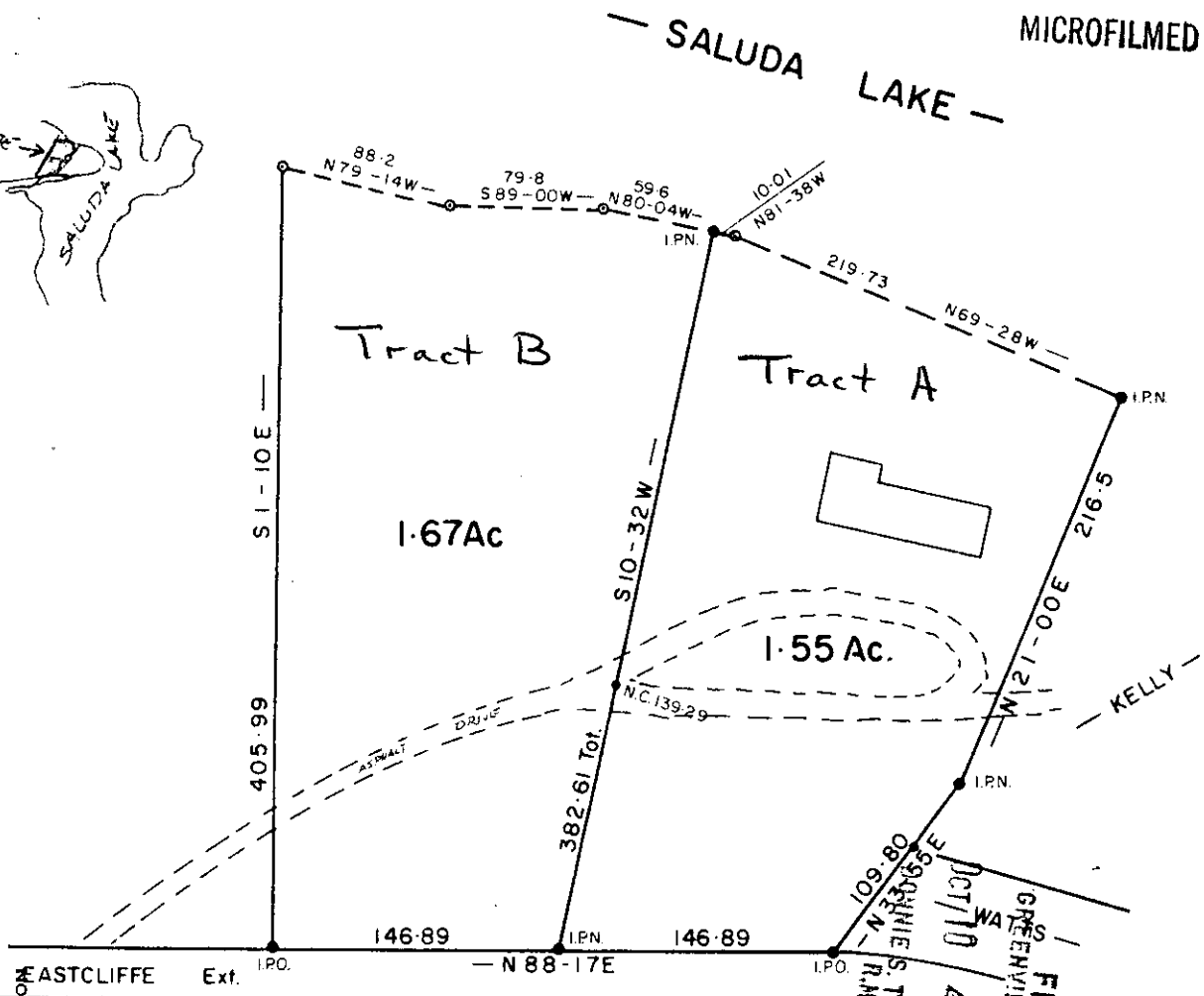
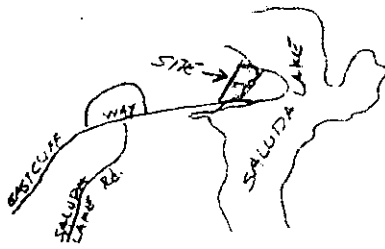


MICROFILMED



CERTIFICATE OF APPROVAL FOR RECORDING

"I hereby certify that the subdivision plat shown hereon has been found to comply with the Subdivision Regulations for Greenville County and that it has been approved for recording in the office of the County Register of Mesne Conveyance."

Lisa Atkins
DIRECTOR OF PLANNING
GREENVILLE COUNTY PLANNING COMMISSION

DATE
Oct 10 1985

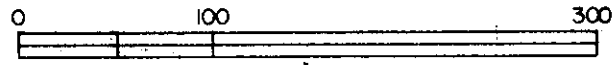
11-3-64

PROPERTY OF 12544

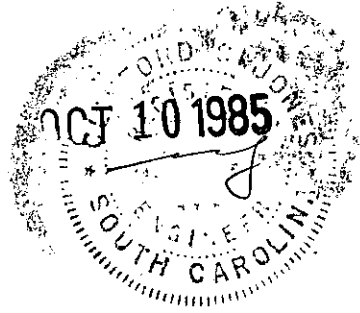
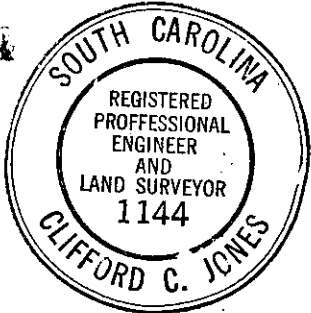
FRANCES O. ELLIS

GREENVILLE COUNTY, S. C.

SEPT. 24, 1985 SCALE 1"=100'



BLK. BK B 3-1-1-44-4



SUMMARY

NOTE: See PLAT BOOK VVV Pg 39A