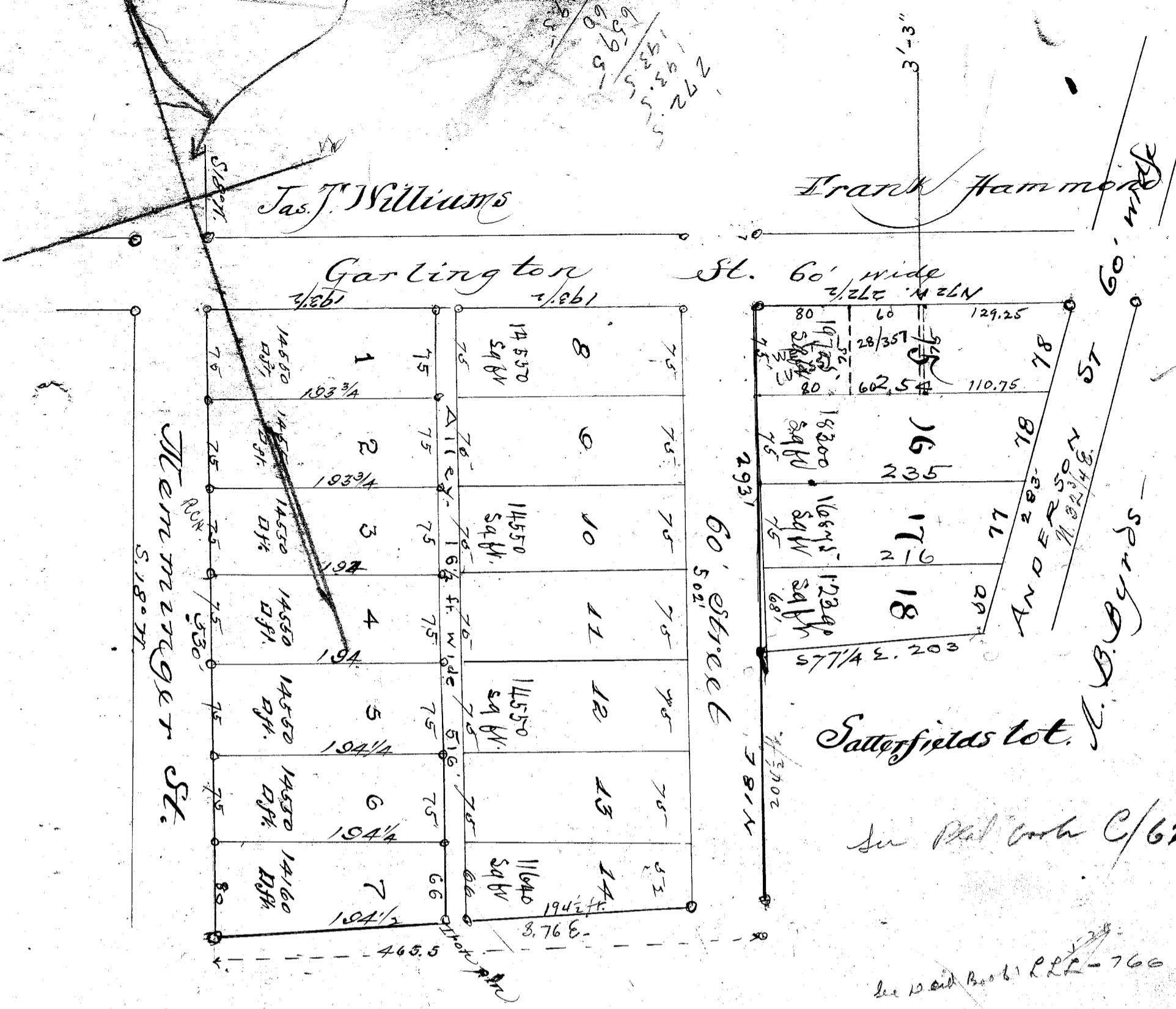


Approximately correct



South Carolina, Greenville County.

The above lot of land belonging to Vardry McBee Esq^r Situate between Pennington^{9th} Anderson Streets west Greenville contains 7 1/2 acres Gross and 6 1/2 acres net. has been divided into 18 lots on Memminger, Garlington, Anderson & Men Streets Bound by above streets and lots of D. Friday, Est of D. Herrell, and the Satterfield lot.

Surveyed Oct. 28 1891.

Wm. A. Johnson D.S.

Scale 100' = 1 inch

Copy of original

[Handwritten signature]