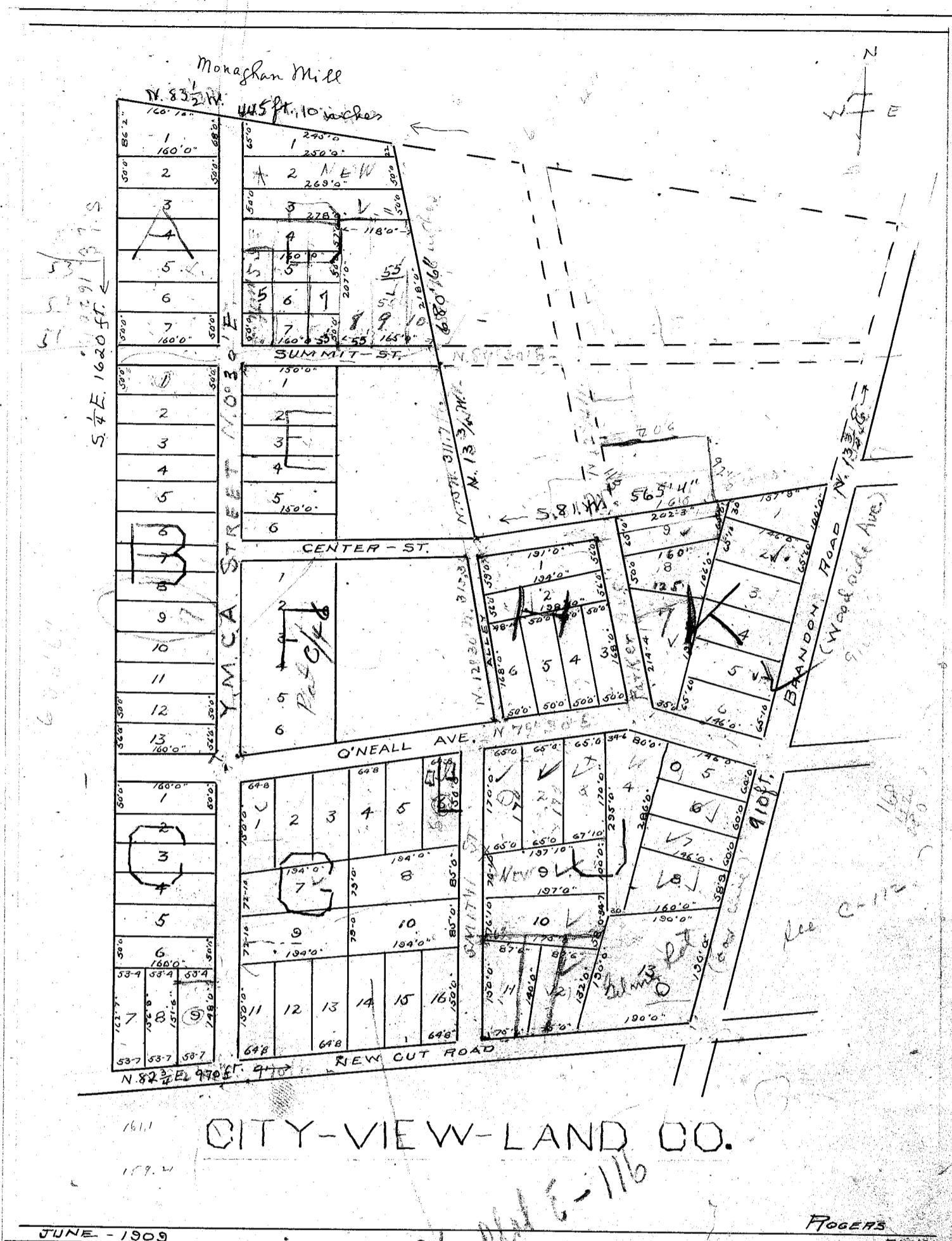


64.8
387.2

55
165
220

657.0
320.0
320.0
100.0
220.0



S. 4 E. 1620 FT.

16

600.6

13.6

34
50
150

90
137.0
76.8
208

190
589

24
132
16

See Plat G-116

See p. 460-461 this book

64.8
994.4
828

64.8
994.4

40.0
184.4

for page 291
see page 291

See p. 460-461
this book

1189
176
14