

PENDLETON STREET

O'NEAL STREET

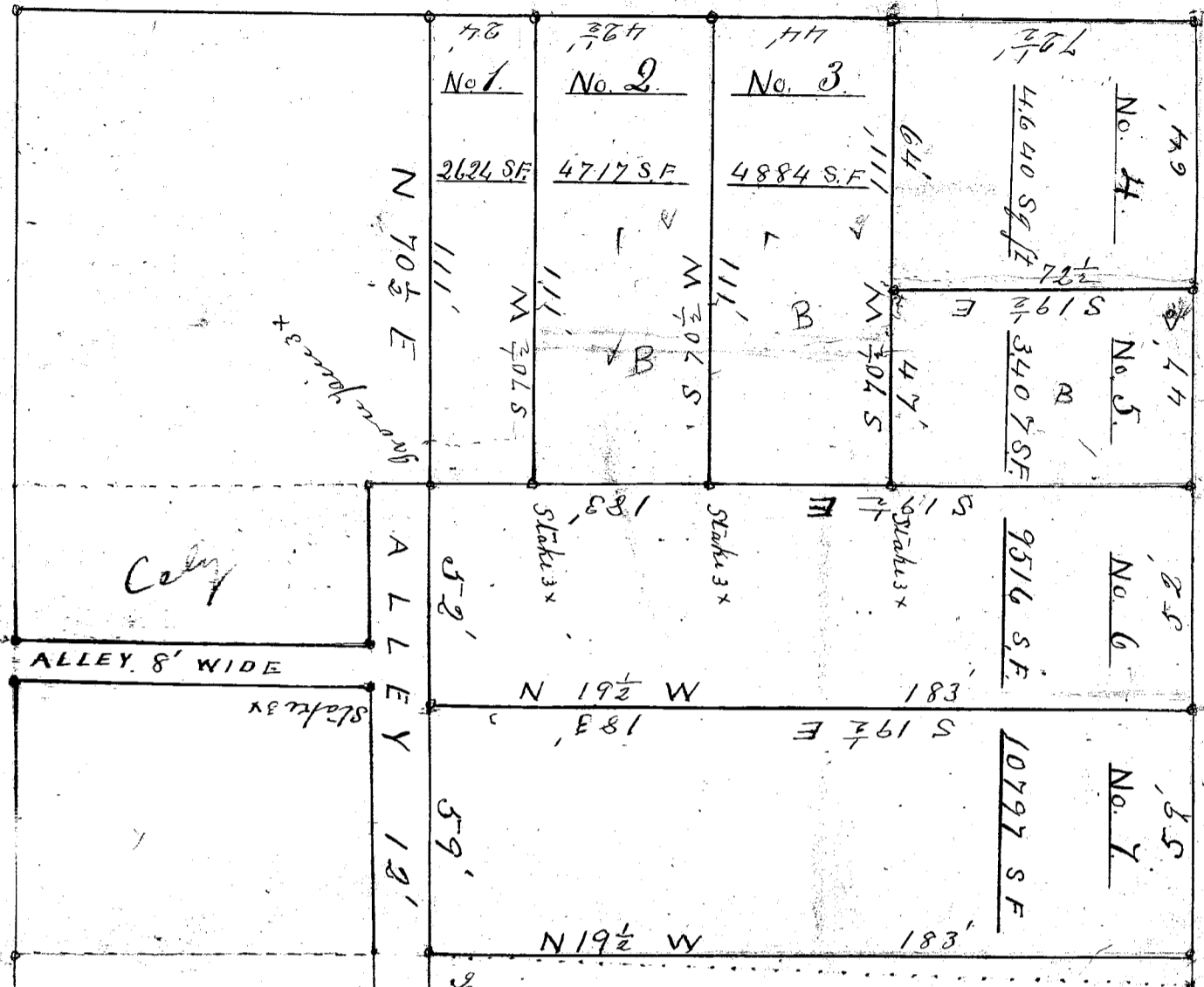
STREET

W

70 1/2

S

RHETT



scale of 40' = 1" mek

By the request and direction of  
 Mr. James I West I have surveyed  
 and divided into seven separate  
 lots the property belonging to  
 John G. Wyatt, bankrupt, situate  
 in the 5th Ward of the City of  
 Greenville, S. C. on Rhett and  
 O'Neal Streets, as is represented  
 by the above plat.

Surveyed the 2nd day of Feb. 1910

J. N. Southern D.S.

64  
44  
52  
163

M2  
44  
60  
200  
100

111  
126  
125  
26

14

26  
34  
192

