

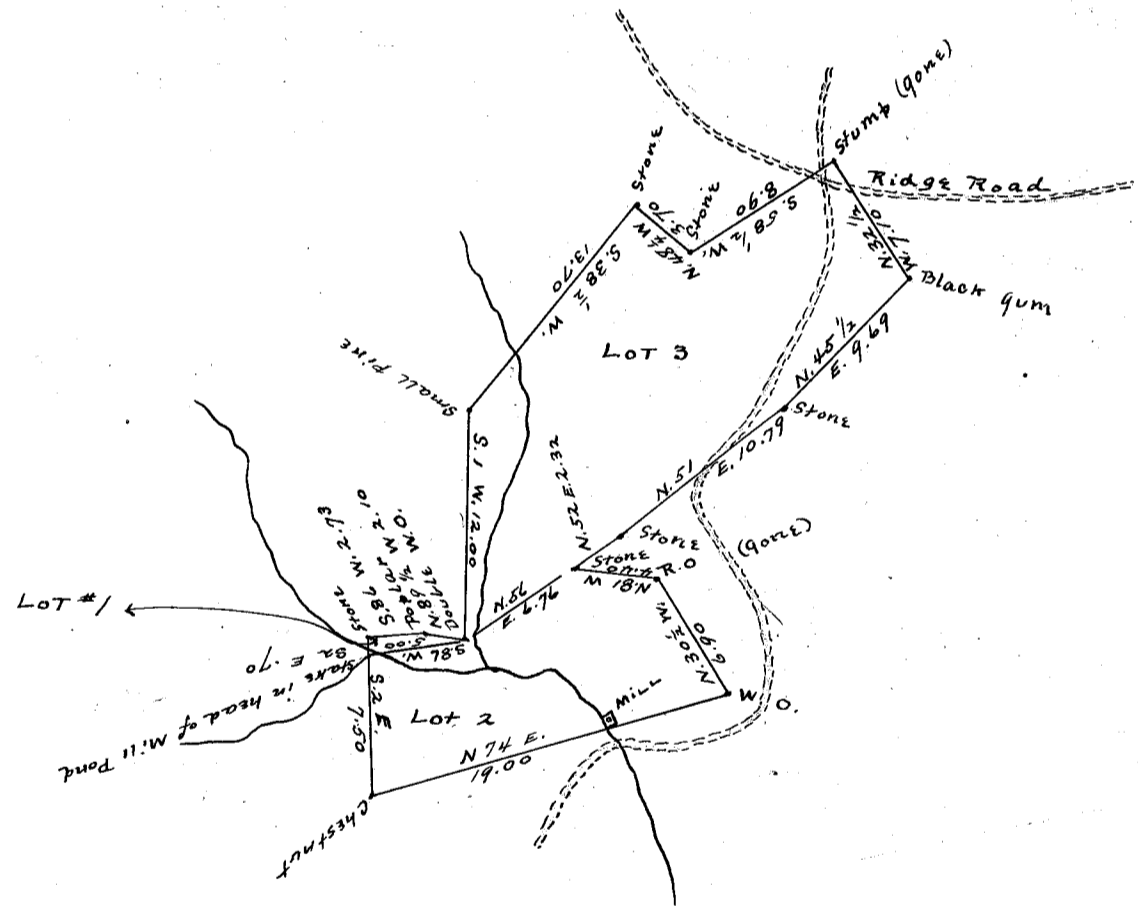
Scale 1 inch- 3 ch.

Rogers, Sur.
1 - 12 - 11

No. 1 Peter Ligon, Jr.

This plat recorded Feby. 4th, 1911,
and Copied by James R. Bates.

445



State of South Carolina,
Greenville County.

Pursuant to request of B.M. Lanford I have surveyed the three lots of land represented by the above Plat, Lot No. 1, contains one-half acre, Lot No. 2, contains 31- $\frac{1}{2}$ acres and Lot No. 3 contains 13- $\frac{3}{4}$ acres and has such marks and bounds as the above plat represents.

Surveyed Dec. 19th, 1908.

B.F. Neves,

Recorded Feby. 14th, 1911

and copied by James R. Bates.

1/2
2 1/2
13 3/4
31 1/2