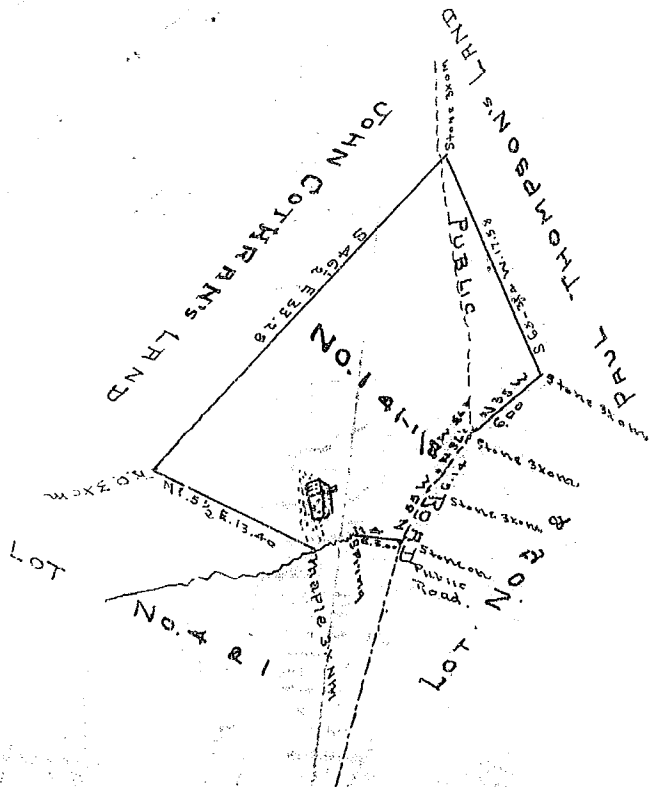


2



BLACK & BATES.

8-25-1911.

South Carolina

Greenville County

on a scale of 100 ft. per inch.

At the request of J. J. McSwain Esq. I have surveyed the Real Estate of the late Robt. Scott and divided it into four tracts No. 1 contains 4 1/8 acres, more or less, and has such lines and boundaries as the above plat represents.

James F. Willis

Sept. the 1st. 1909.

Recorded August 25-1911.