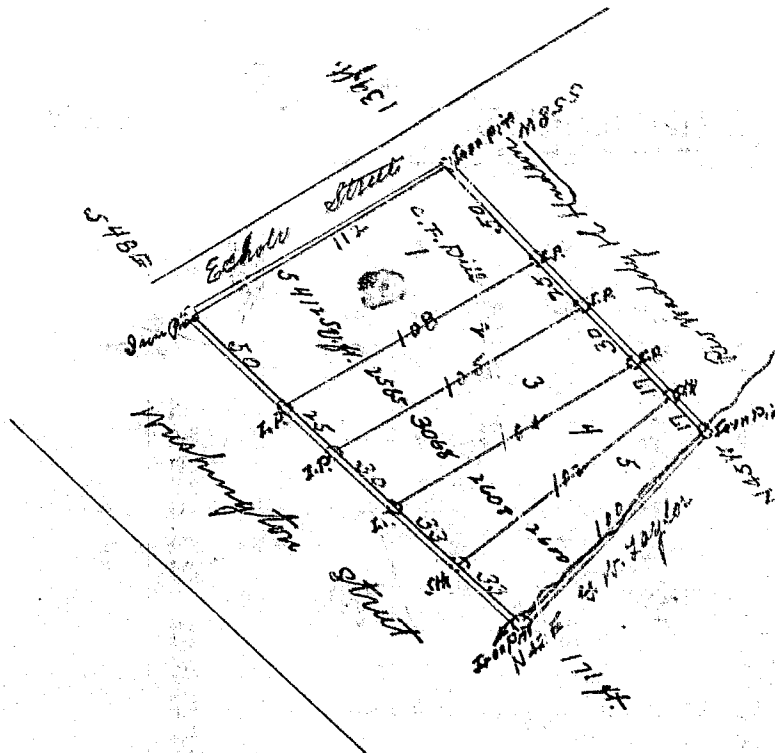


Scaled at 50 feet to an Inch



Total 16,273.59 feet.

South Carolina }
 Greenville County } By request of W. P. Conger Esq.
 I have surveyed and laid off to
 the above Five lots of land containing 16,273.59 ft.
 Situate in the State and County aforesaid on both
 sides of Washington Street Greenville S. C.
 and hath such shape marks and boundaries
 as above stated.

Surveyed Feby 17th 1905

Wm. A. Hudson
 S. J.

Recorded May 7th 1912

Platted by H.