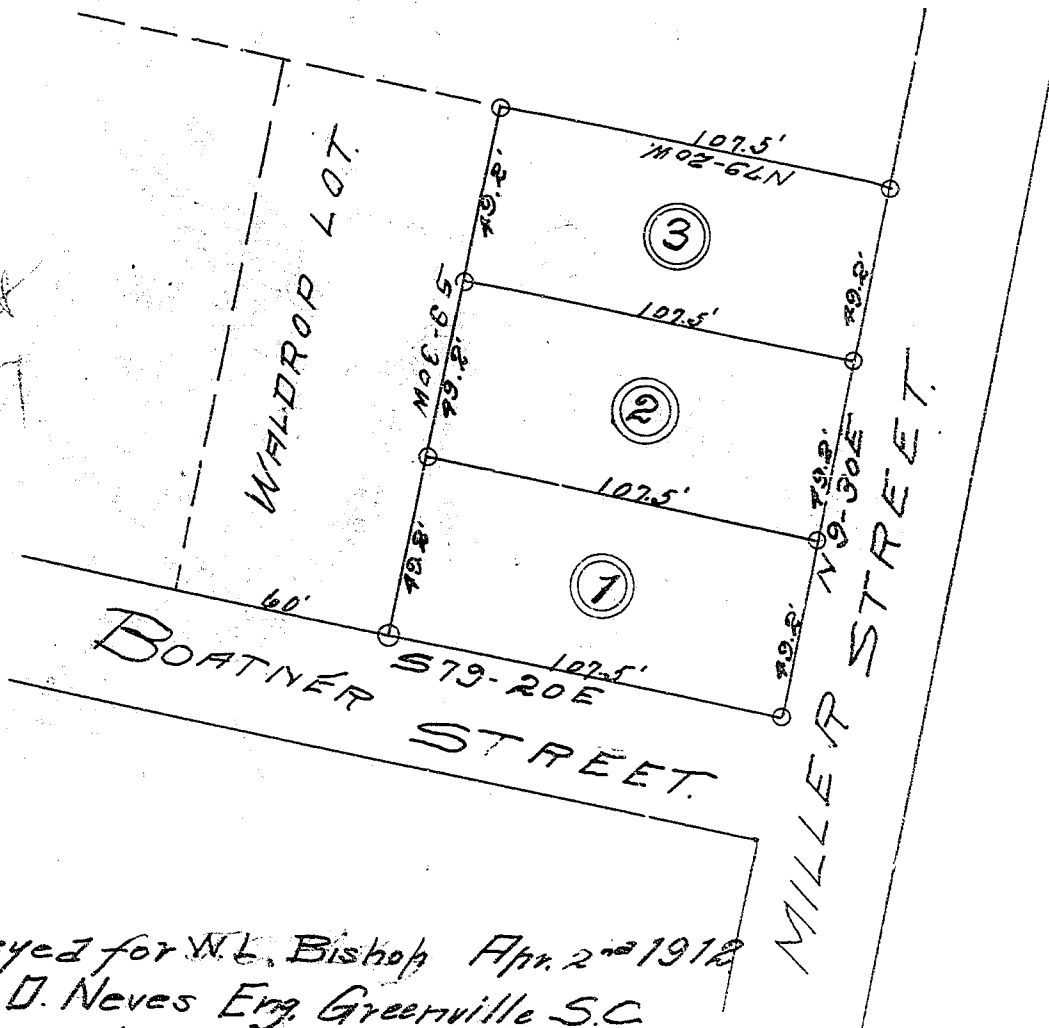


*See Plat
A/307*



**PLAT OF
W. L. BISHOP'S LOTS
GREENVILLE, S.C.**

*Surveyed for W. L. Bishop Apr. 2nd 1912
By W. D. Neves Eng. Greenville S.C.
Lots are located in SUB-DIVISION
KNOWN AS NEW-HOME near Greenville S.C.*

Scale 40' = 1"

*Record May 24th 1912
Platted by N.*