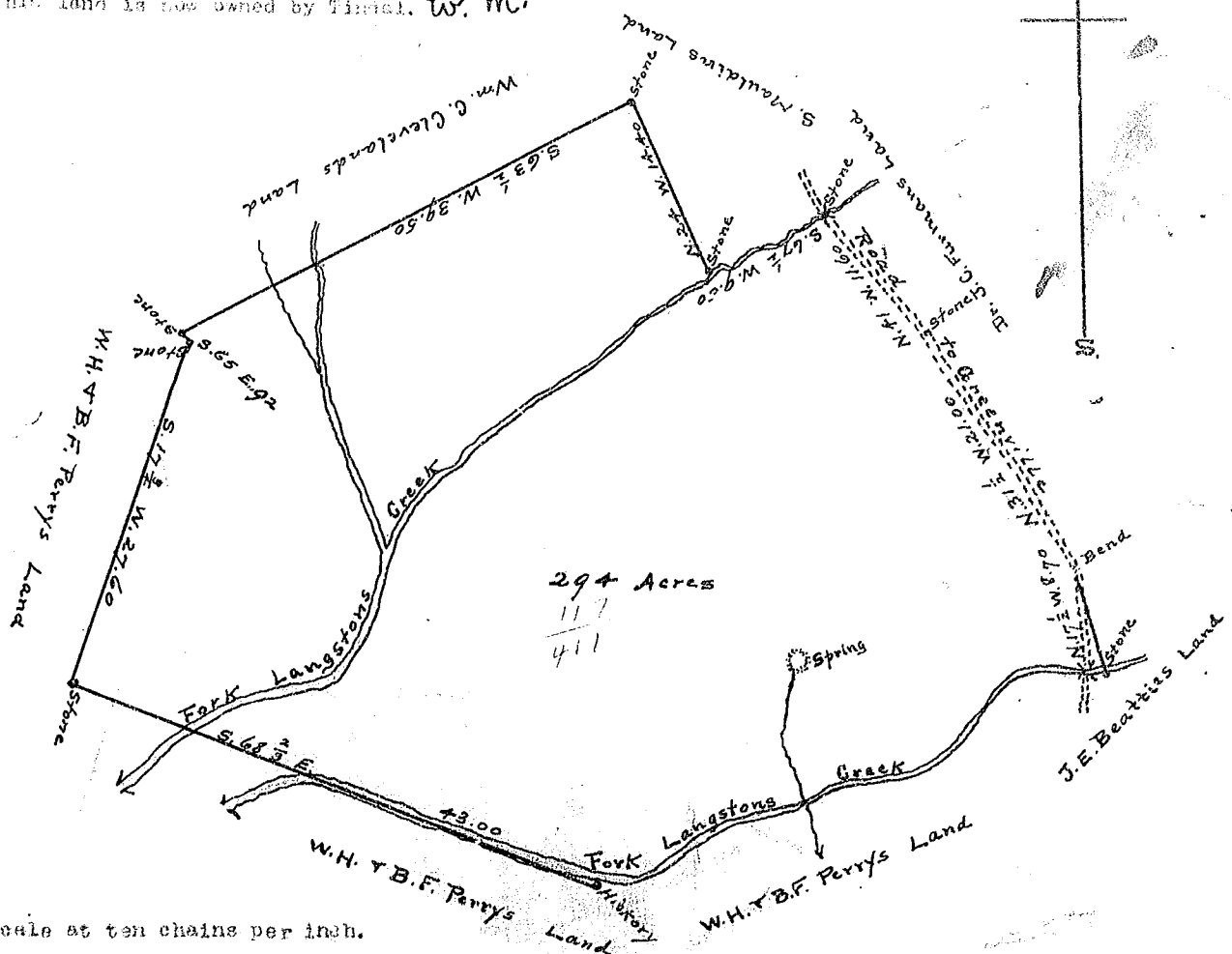


This land is now owned by Thiel. W. M.



Scale at ten chains per inch.

South Carolina,
County of Greenville.

By request of Rev. J.C. Purnan, D.D. I have resurveyed the above tract of land, known as the Pettis W. Chick tract of land, situate 4 miles from the City of Greenville on road to Paris Mountain, on waters of Langstons Creek of Reedy River and hath such corners, marks, boundaries &c. as shown by the above plat.

Resurveyed Jany. 20th, 1859.

Wm. A. Hudson,
D.S.

Recorded for March 25th, 1864,
and copied by James F. Yates.