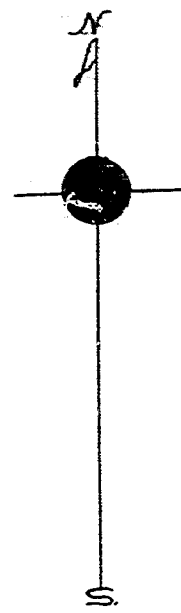
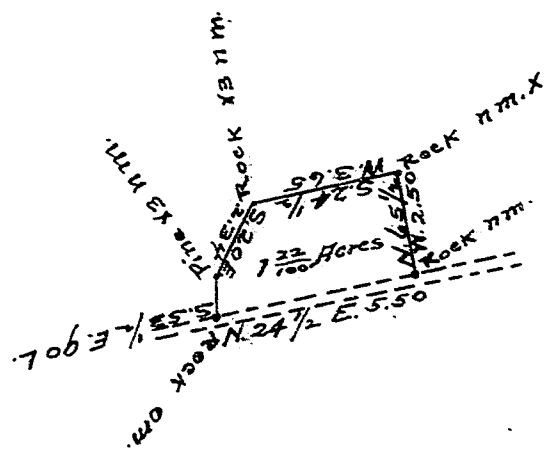


174

174



Scale 5 chs. or. inch.

South Carolina,
Greenville County.

I have surveyed and admeasured the above lot for the Patrons of Mount Ararat Baptist Church, and find it to contain 1-32/100 acres, and it hath such shape, marks and boundaries as the above plat sheweth.

Witness my hand and seal, this 26th day of September, 1814.
J. R. Bares, Surveyor.

Recorded for Sept. 26th, 1814.
and copied by Jas. R. Bares.