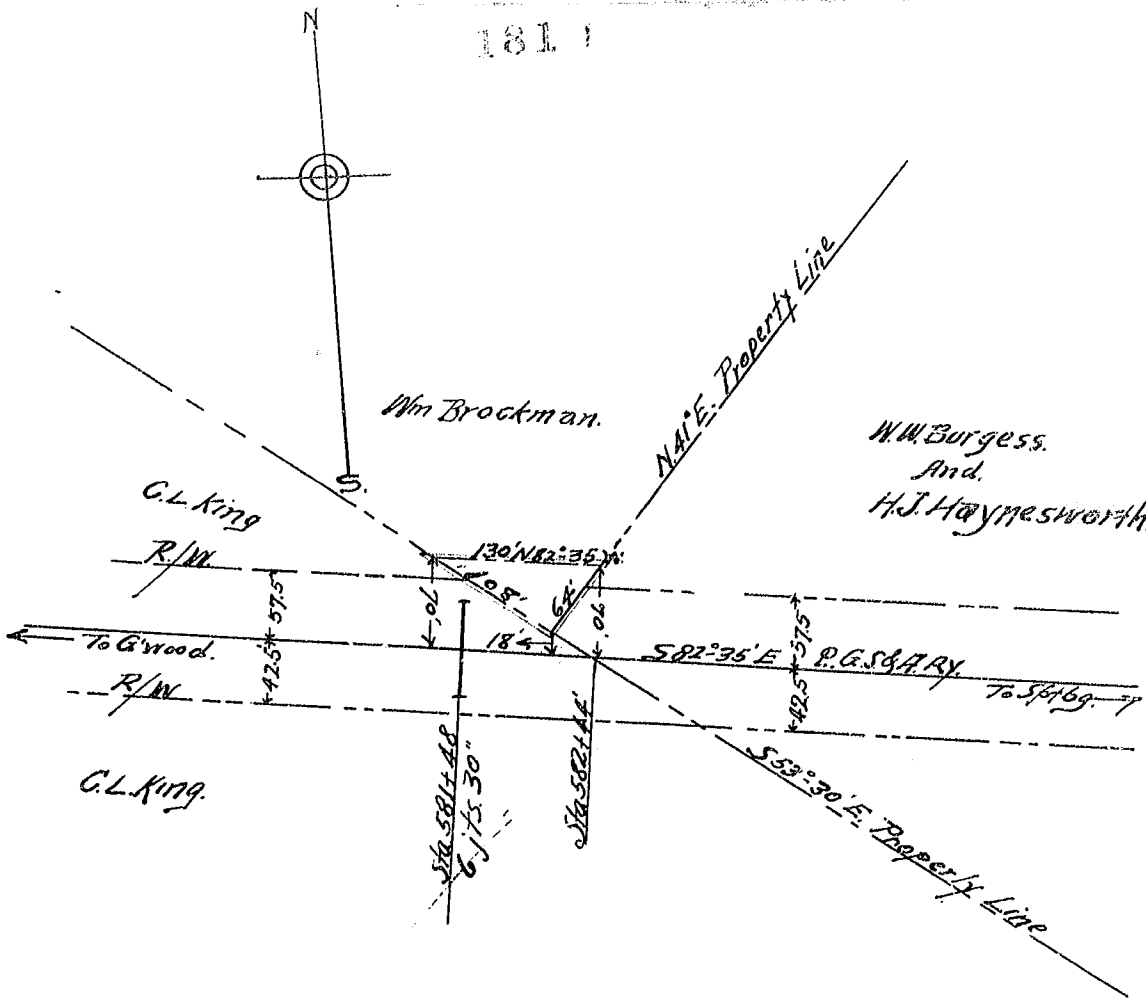


181

181



Wm Brockman
P.G. S&A RY

Map showing the Right of Way
required for the P.G. Ry. through
lands of Wm Brockman, C.L. King,
C.J. King, and H.J. Haynesworth.
Surveyed by Wm. H. Henshaw, C.E.
for A.G. Lee, P.G. S&A RY. (R/W)
Surveyed on July 10th, 1917.
Map Book C Page 101.