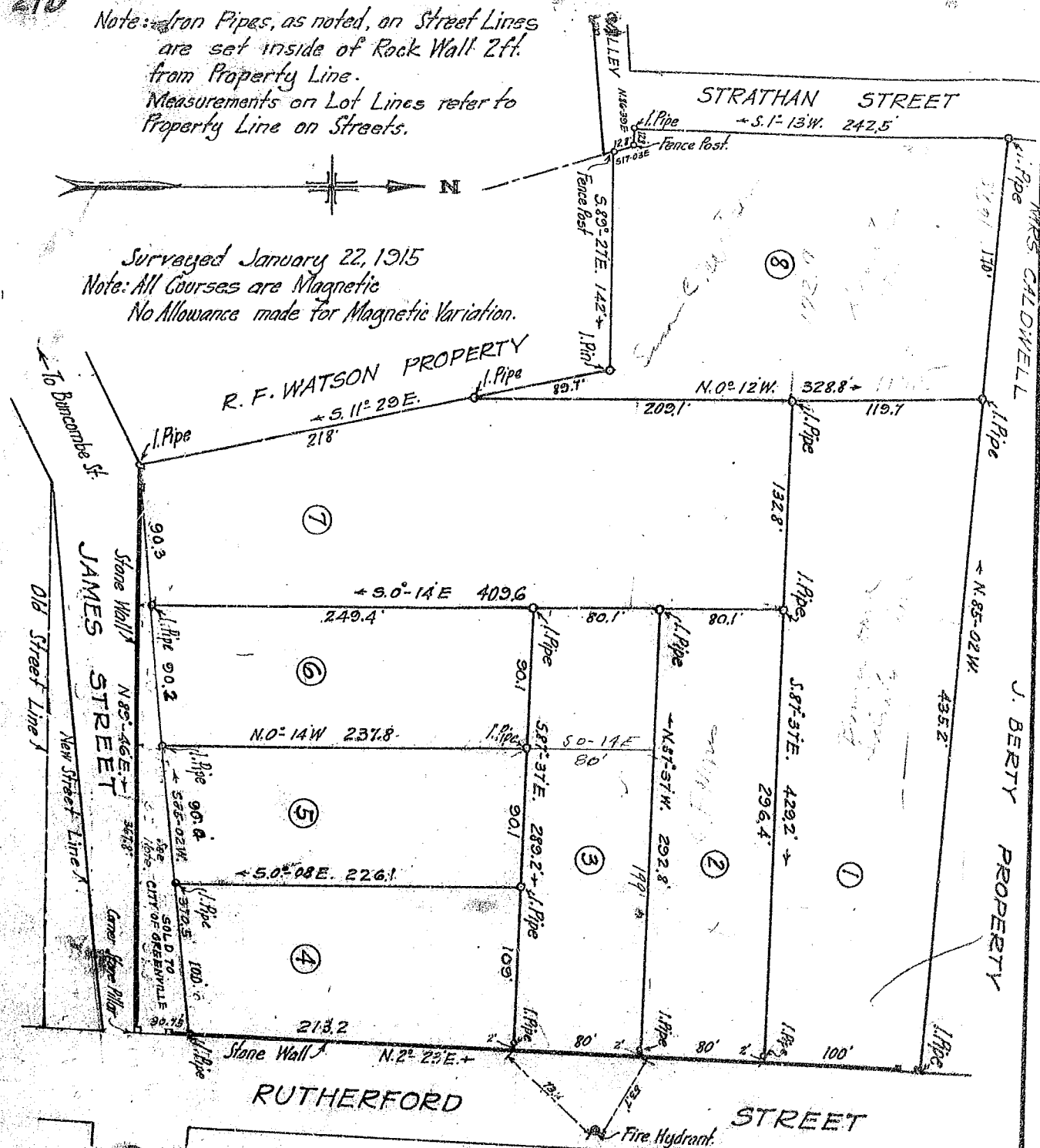


Note: Iron Pipes, as noted, on Street Lines are set inside of Rock Wall 2ft. from Property Line.
Measurements on Lot Lines refer to Property Line on Streets.



Surveyed January 22, 1915
Note: All Courses are Magnetic
No Allowance made for Magnetic Variation.



Note: Amendments to Plat made May 1, 1915. Triangle made by red line transferred to City of Greenville S.C. for Street Purposes. Lot depths were changed in accordance with same. Additional Survey Oct. 1915.

SUBDIVISION OF MARGARET HOME PROPERTY GREENVILLE S.C.

Scale 1 = 60ft - Jan. 1915.

PROPERTY OF WOMANS MISSIONARY UNION AUXILIARY OF SOUTHERN BAPTIST CONVENTION

F.B.C. 11.
105 118-1

Recorded Jan. 26, 1915, by R.E. Dalton.

R. E. DALTON, ENGINEER
GREENVILLE, S.C.