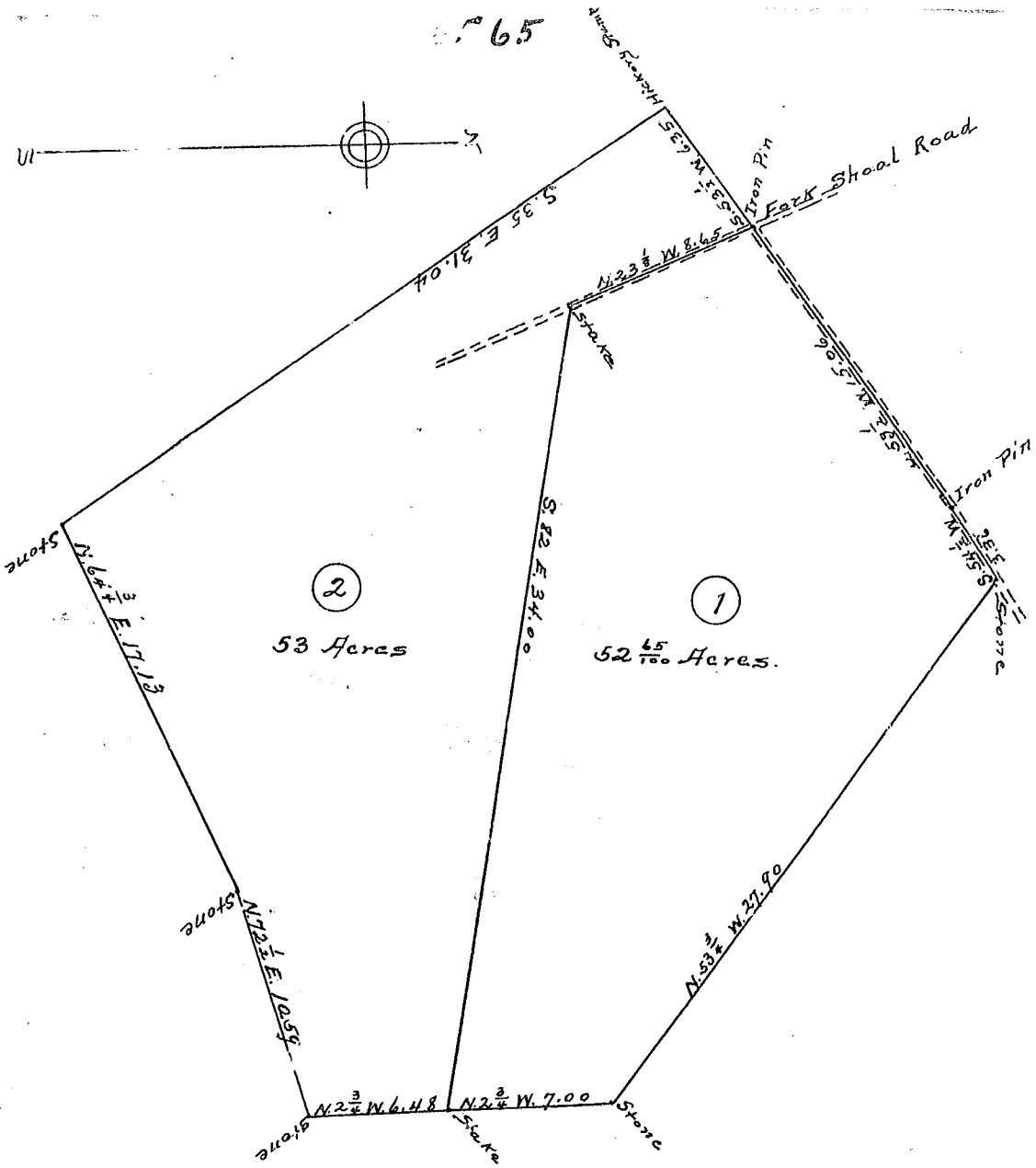


Plot Book-E-Page 65

65

65

65



South Carolina,

Greenville County.

By request I have platted from notes of P.F. Cox's Estate, situated in State and County aforesaid, on the Fork Shoal Road, containing 52-65/100 acres and 53 acres as shown. Platted 20th, 1917.

W.A. Adams, Surveyor.

Recorded Aug. 30th, 1917.

Copied and Certified to by James R. Bates

R.M.C.