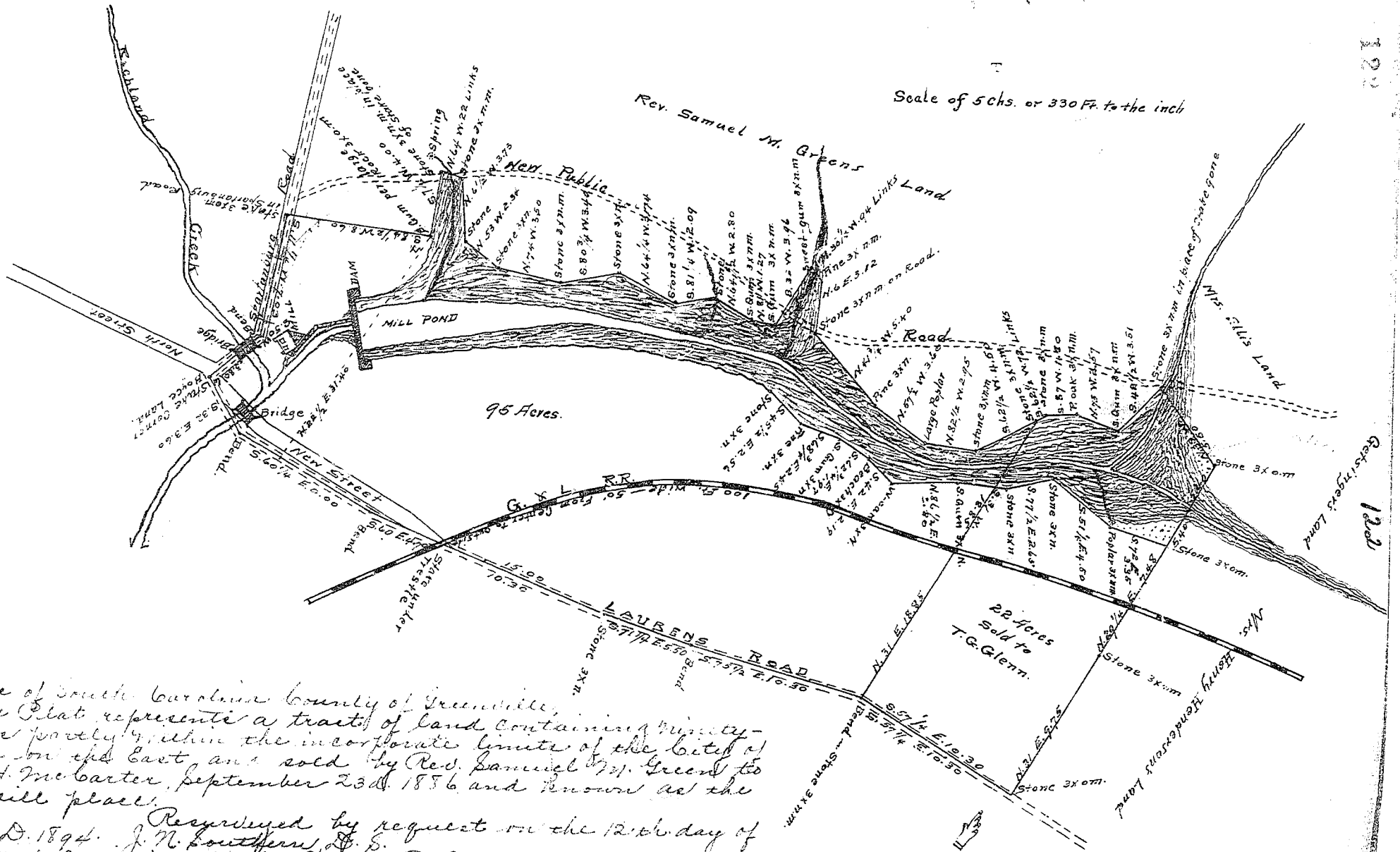


Plat Book E-Page 122



The State of South Carolina County of Greenville,
 The above Plat represents a tract of land containing ninety-
 five acres partly within the incorporate limits of the City of
 Greenville on the East and sold by Rev. Samuel M. Green to
 S. L. + R. H. Mc Carter, September 23^d. 1856 and known as the
 Green's mill place.

Resurveyed by request on the 12th day of
 April, A. D. 1894. J. N. Southern, S. S.

Copied and certified to, by James P. Bates, R. M. C. 17. 06. 64. 94.