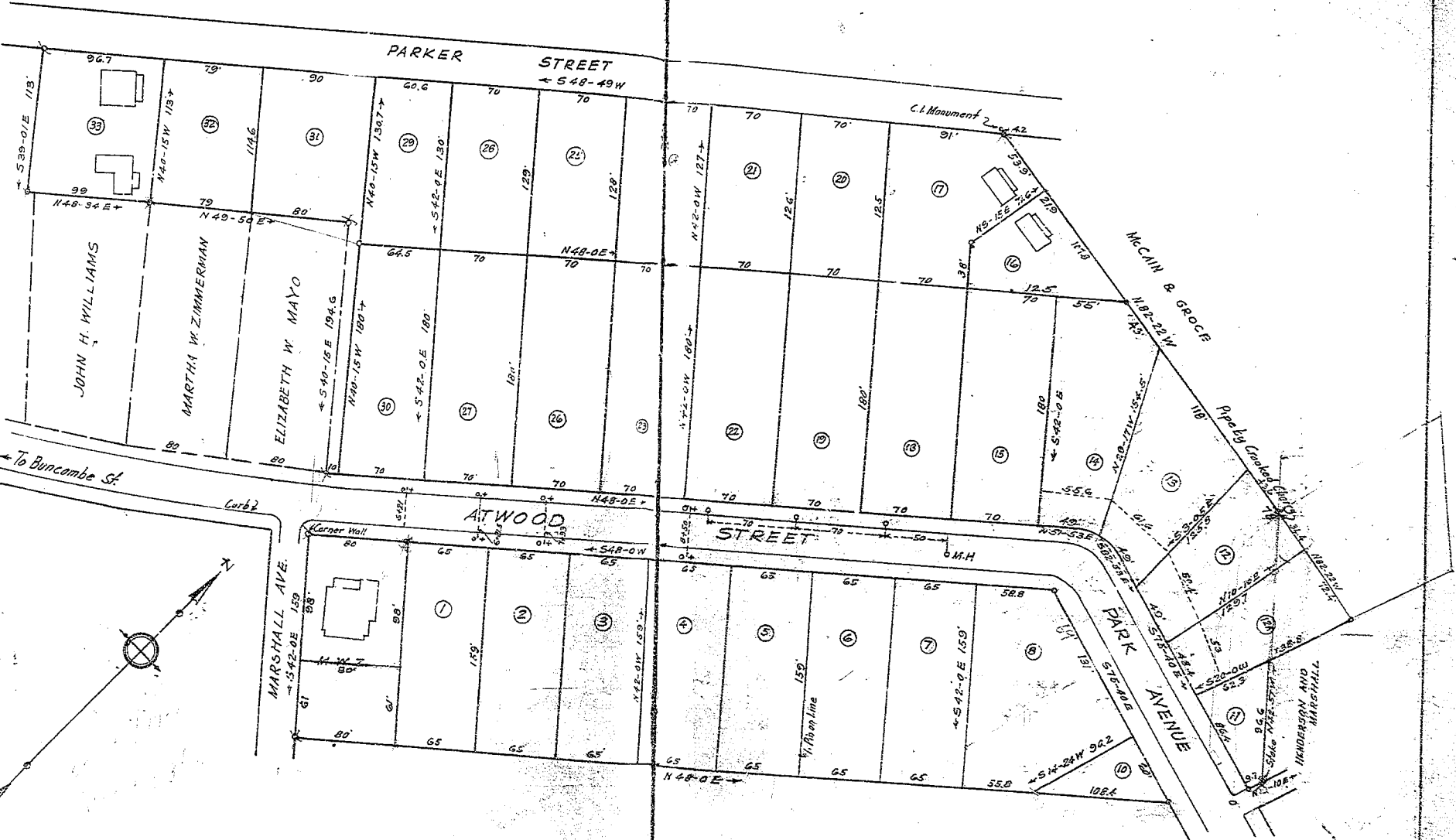


IDA LEWIS



To Buncombe St

Curb

MARSHALL AVE.

ATWOOD STREET

ATWOOD STREET

PARK AVENUE

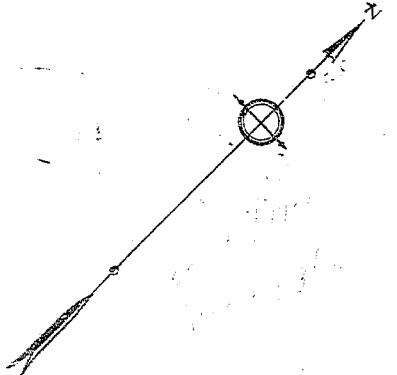
PARKER STREET  
← 548-49 W

C.I. Monument

MCCANN & GROCE

Property Owned by J.C. Dalton

MURPHY AND MARSHALL



Notes: Iron Pipes at all Corners, except as noted.  
 ○ Denotes Sewer Connections.  
 + Denotes Water Connections.  
 Measurements made from Curb on Buncombe St.  
 along East Curb of Atwood St., except as noted  
 from Manhole.  
 Sewer & Water Connections on East side Atwood St. at  
 Sta 1481, 2444, 3+77, 4+19 - 6+21 West Side  
 6+81.5 E.R.W. 7+33 E.R.W. 8+50 E.R.W.  
 Sewer on W. Side as noted from M.H.  
 Measurements Copied from Sketch by L.L. Barr

R. E. DALTON, ENGR.

PROPERTY OF  
 SAM R ZIMMERMAN  
 AND FERRIS M WILLIAMS  
 GREENVILLE S. C.

Scale 1"=60' - May 1919

Recorded June 18, 1919, by R.E.D.  
 Revised Feb. 1922