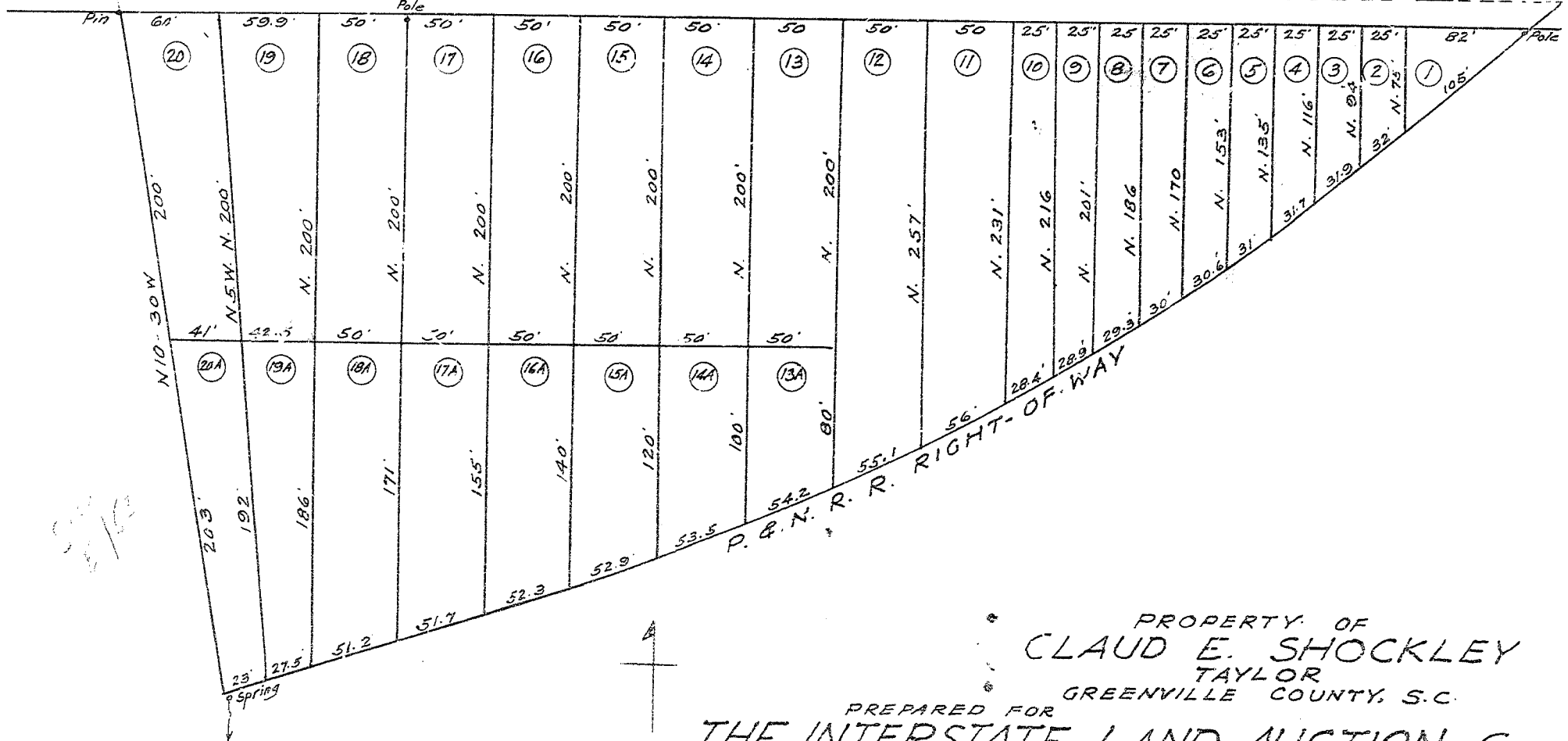


ALL MEASUREMENTS WITH CENTER OF NATL. HIGHWAY



5/12

PROPERTY OF  
**CLAUD E. SHOCKLEY**  
 TAYLOR  
 GREENVILLE COUNTY, S.C.  
 PREPARED FOR  
**THE INTERSTATE LAND AUCTION Co.**  
 SPARTANBURG, S.C.  
 Oct. 31, 1922.

Recorded Nov. 15, 1922, by R.E.D.

BY **Thos. T. Linder**  
 Spartanburg, S.C.