

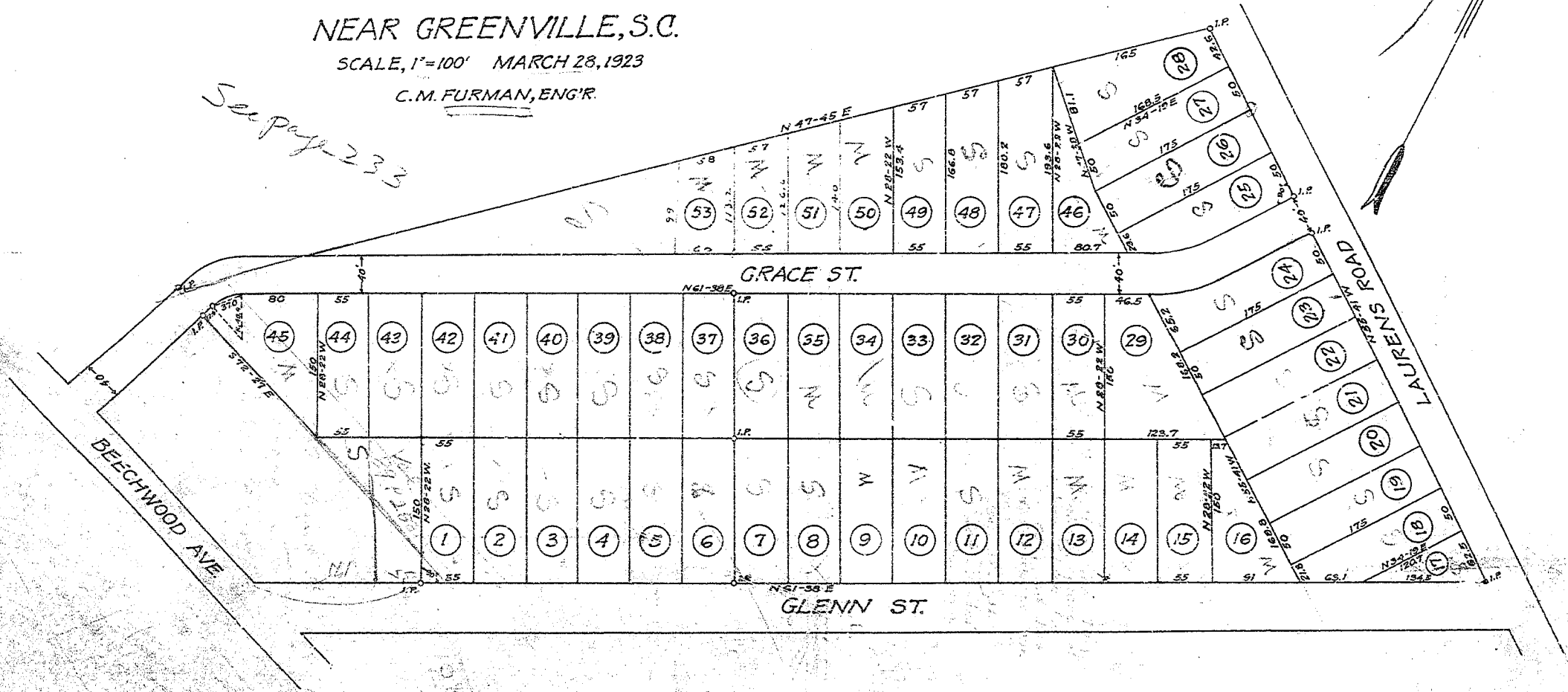
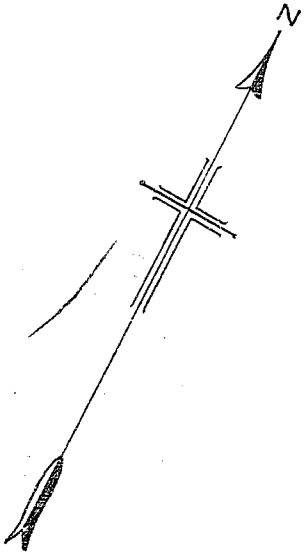
PROPERTY OF
E.G. GLENN
NEAR GREENVILLE, S.C.

SCALE, 1"=100' MARCH 28, 1923

C.M. FURMAN, ENG'R.

See page 109

See page 233



Reduced from a scale of 50' to an inch and Recorded August 1, 1923 by Kay Bee.

BAD COPY