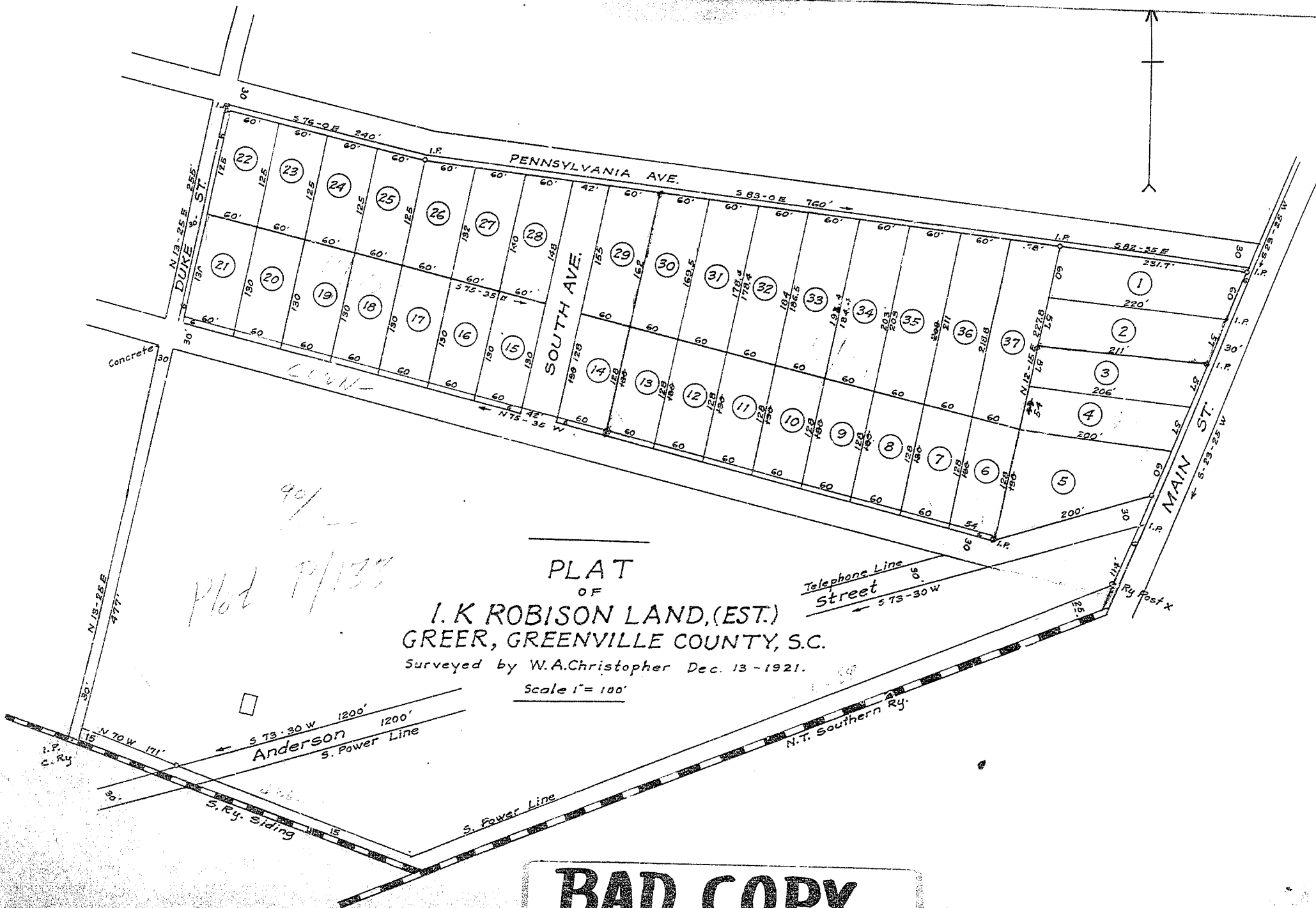


Recorded Oct. 19, 1923 by Kay-Bee



49/133  
Plat P/133

PLAT  
OF  
I. K. ROBISON LAND, (EST.)  
GREER, GREENVILLE COUNTY, S.C.  
Surveyed by W.A. Christopher Dec. 13-1921.

Scale 1" = 100'

**BAD COPY**