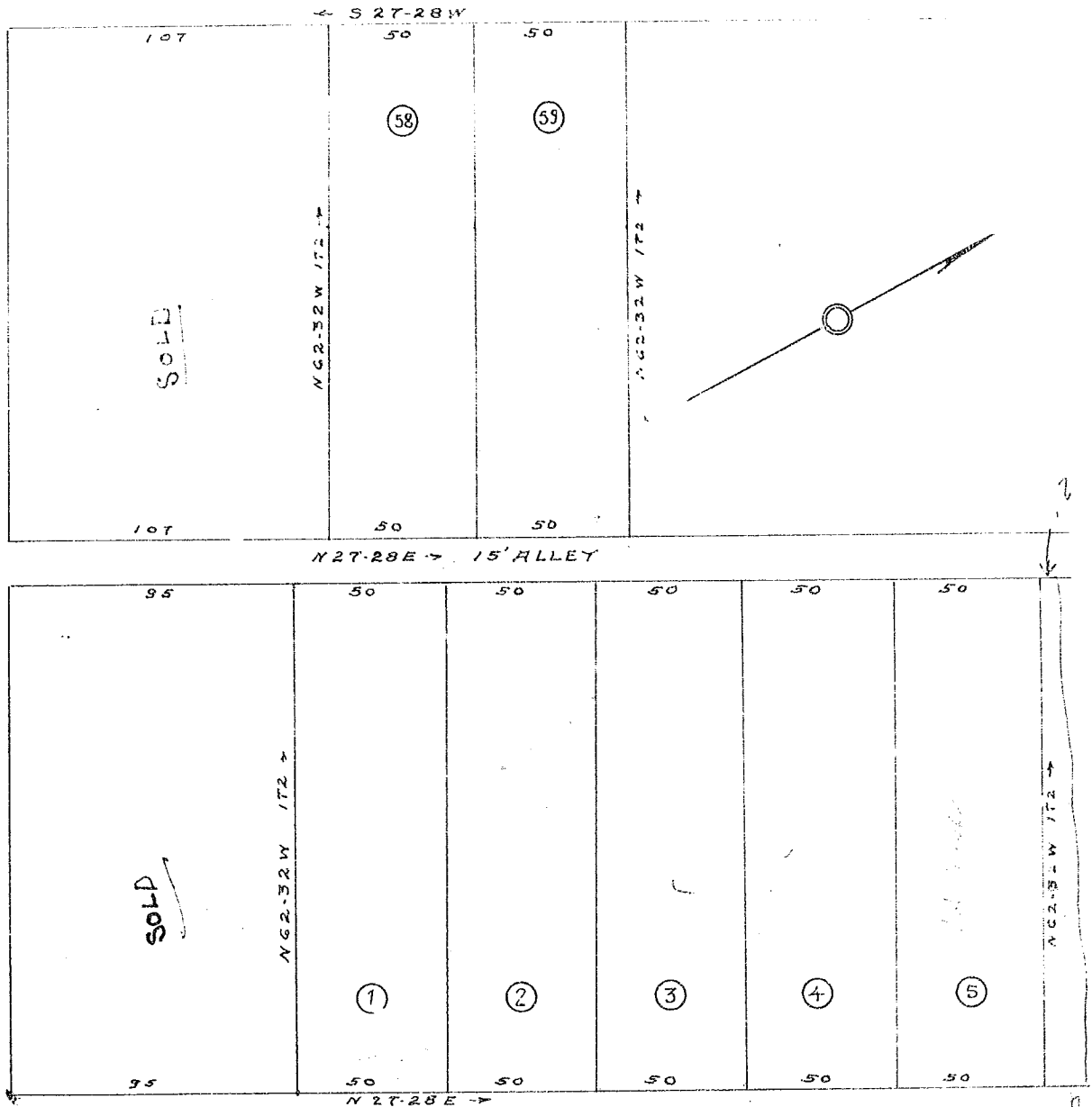


PROPERTY
OF
E. C. CASS

GROVE ROAD



SALUDA AVE.

KEOWEE AVE

NOTE. LOTS 1-2-3-4-5 CUT FROM LOTS 50-51-52-53
AND 10' STRIP FROM 54 SEE PLAT BOOK C-26

SCALE 1"=40'

MAY 1-1927

C. M. FURMAN JR. ENG.

6A