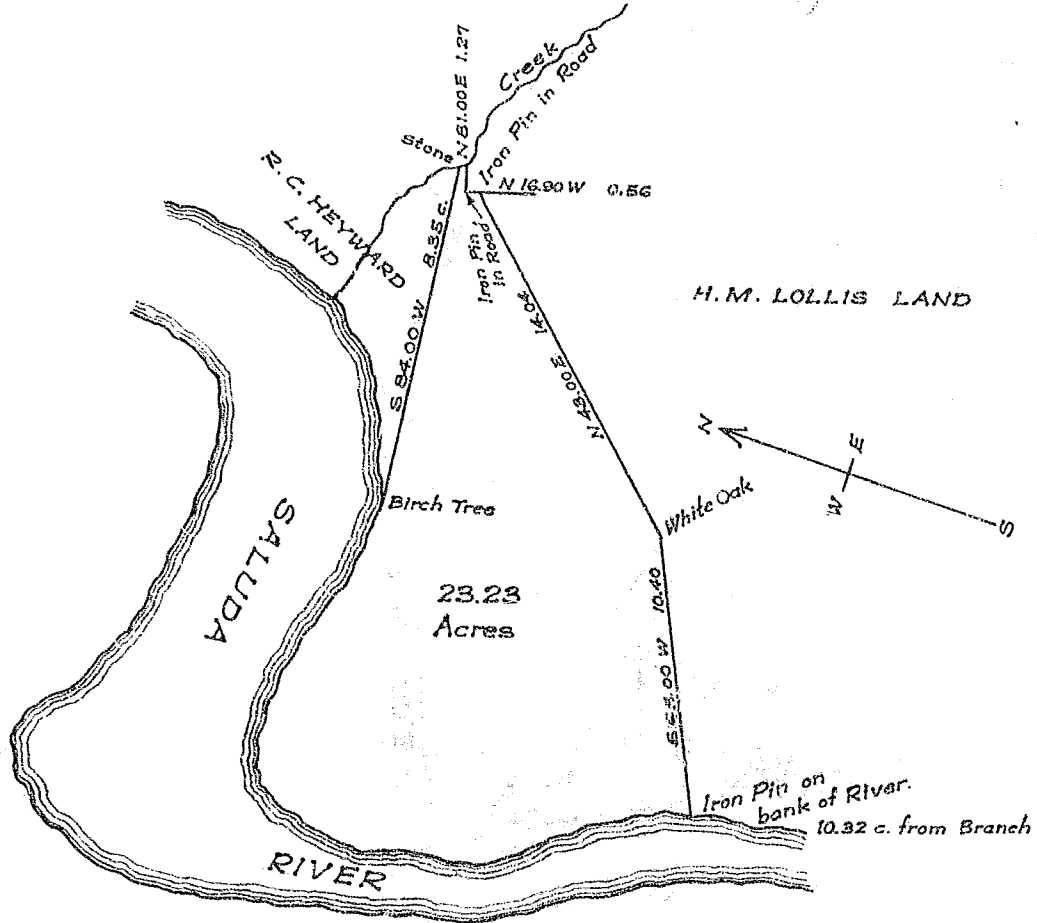


PELZER MFG. CO.
TO
G. W. HINSON



This is to certify that I have this day surveyed and measured the above track of land and find same to contain 23.23 acres.

Pelzer, S.C.
April 1, 1920

E. J. Kollock
Engr.

SCALE
1" = 6 ch.

Recorded Feb. 12, 1925 by Kay. Bee.

