

LAKE LANIER

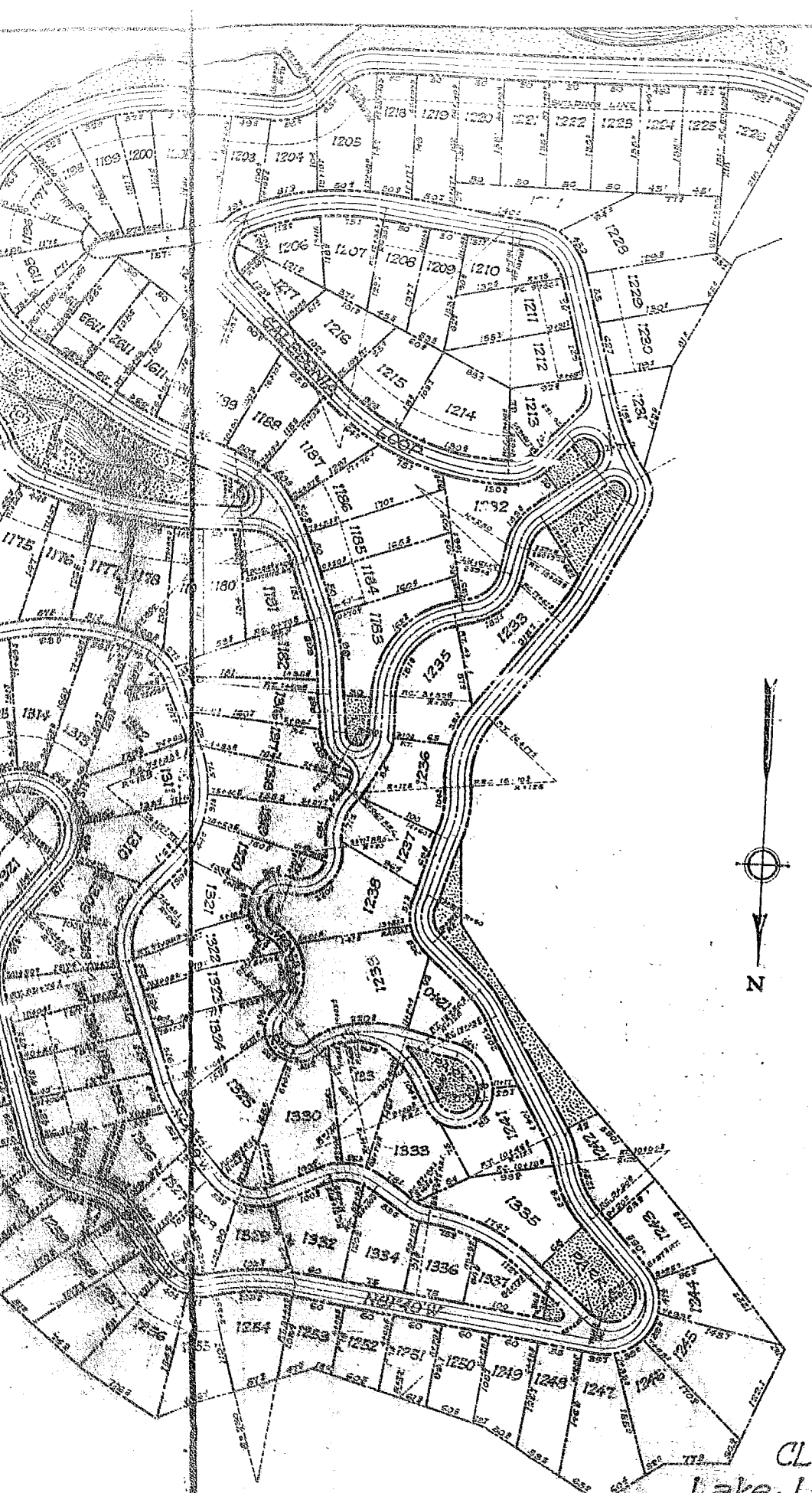


Scale of 1 inch to 60 feet.

NOTE - ALL DISTANCES SHOWN ON CURVED LINES ARE MEASURED IN CHORDS OF 25 FEET.

BUILDING LINE 40 FEET UNLESS OTHERWISE NOTED.

NOTE - CONCRETE ARCHES SHOWN ARE 25 FEET IN WIDTH.



NOTE - CONCRETE MARKERS PLACED AT THE BEGINNING AND END OF ALL CURVES.



CLAN ALPINE SECTION
 Lake Lanier Development
 TRYON, NC

SCALE 1 INCH = 120 FEET

Office of Geo. Kershaw, Hendersonville, N.C.
 June 30, 1924