

PROPERTY OF
THE PARIS-MT.-CAESAR'S HEAD CO.

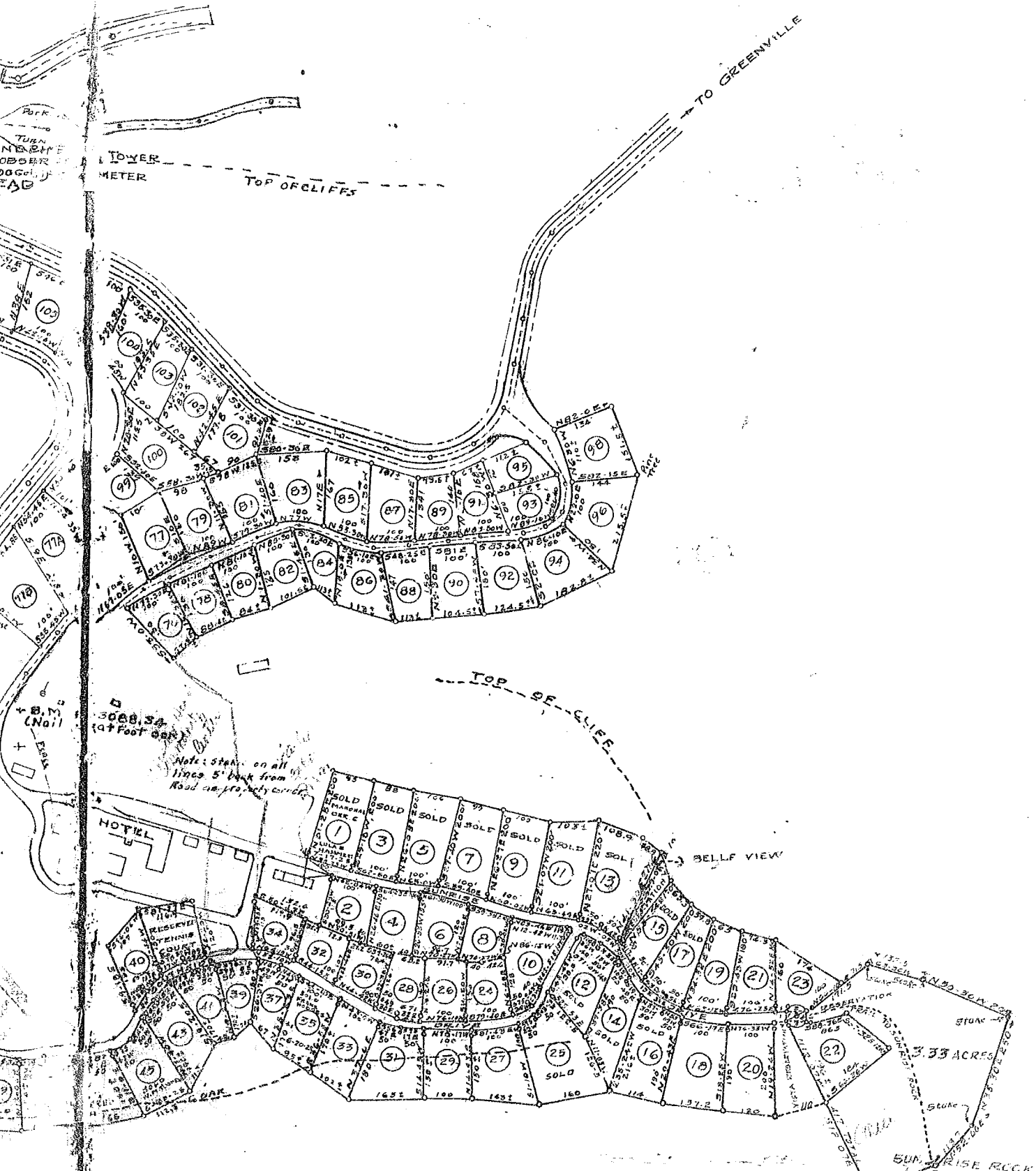
SHOWING CAESAR'S HEAD
 SECTION 'A' DEVELOPMENT

SCALE OF FEET

0 100 200 300

OCTOBER 9 1924

F. E. CALTON ENGR.



- 1 - 576 - 24 W 20.6
- 2 - 576 - 15 E 25.0
- 3 - 547 - 16 W 25.0
- 4 - 647 - 50 E 25.0
- 5 - 520 - 4.5 E 25.0
- 6 - 510 - 30 W 25.0
- 7 - 522 - 25 W 20.8
- 8 - 577 - 59 E 23.0
- 9 - 574 - 29 E 13.4: CHORD OF CIRCLE 25'
- 10 - 575 - 4.2 E 14.7: 2' CHORD ON CIRCLE 25' RADIUS