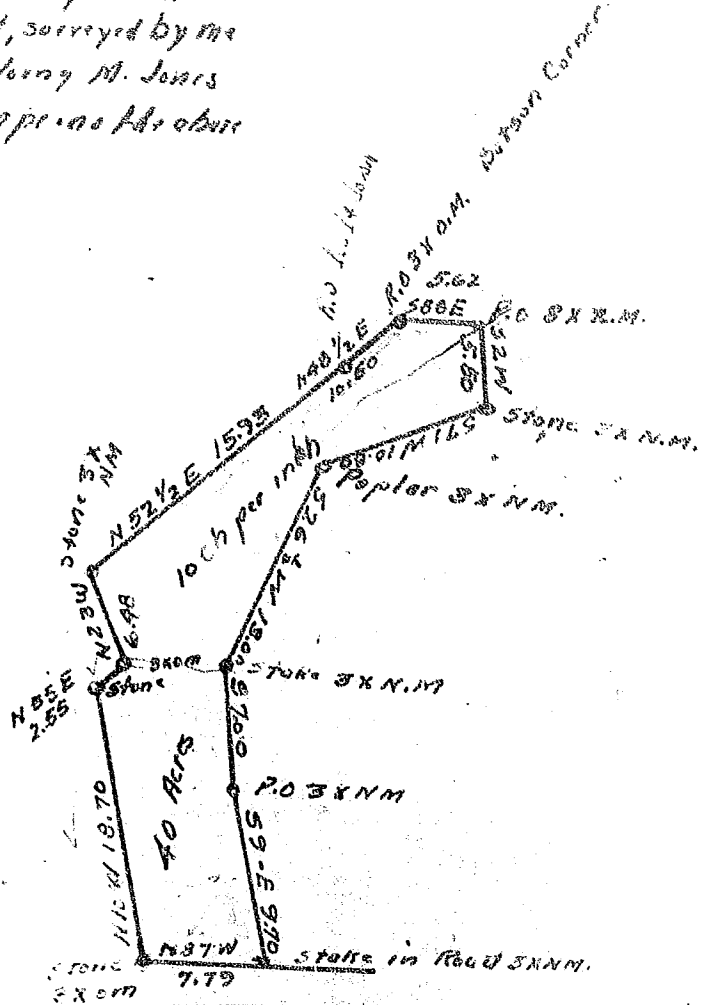


Property of  
J. L. PHILLIPS

State of S.C.  
Greenville County

This above plat represents  
a piece parcel or tract of land, surveyed by me  
on 20th day Feb 1879 for Jerry M. Jones  
and his heirs and assigns and shows the shape and  
boundaries of the same and represents.

B. F. NEVES



Recorded Aug 25 1933 by Wm. East.

10233