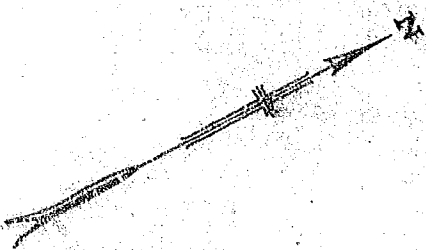
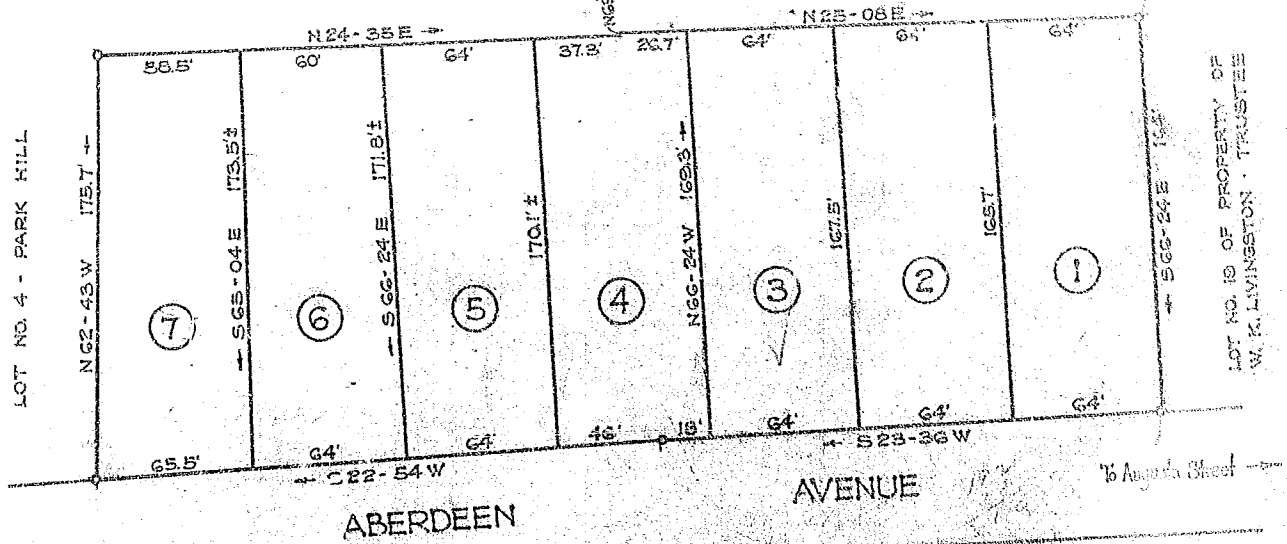


LOTS 7, 8 & 9 - PARK HILL

LOTS 1, 2, 3, 4 OF PROPERTY OF W.K. LIVINGSTON TRUSTEE



PROPERTY OF
PARRISH & GOWER
 ABERDEEN AVENUE
 NEAR GREENVILLE S. C.
 Scale: 1" = 60' November, 1928

LOTS 1, 2 & 3 OF PLAT NO. 1 - PARK HILL
 AND LOTS 20, 21 & 22 OF W.K. LIVINGSTON TRUSTEE

DALTON & NEVES ENGINEERS

Recorded April 24, 1929, by Kay Bee

239.5
 193.5
 46